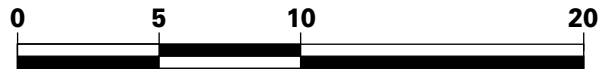


UPPER GREEN RIVER BASIN

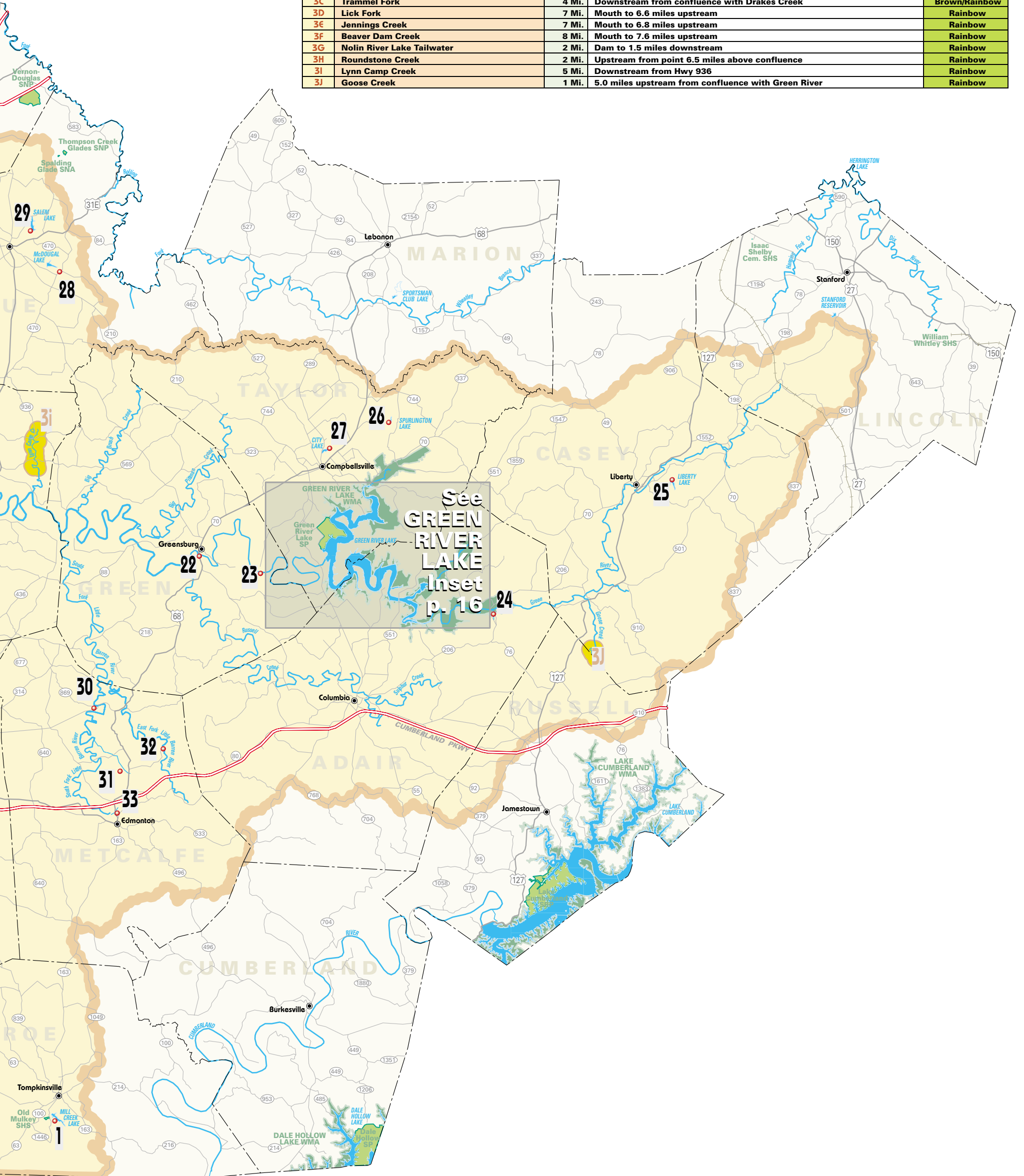
See Basin Index on p.14



Approximate Scale in Miles

Trout Stream Index

NUMBER	STREAM NAME	LENGTH	LOCATION	TROUT SPECIES
3A	Peter Creek	8 Mi.	Downstream from Hwy 249	Rainbow
3B	Barren River Lake Tailwater	2 Mi.	Dam to 2.0 miles downstream	Rainbow
3C	Trammel Fork	4 Mi.	Downstream from confluence with Drakes Creek	Brown/Rainbow
3D	Lick Fork	7 Mi.	Mouth to 6.6 miles upstream	Rainbow
3E	Jennings Creek	7 Mi.	Mouth to 6.8 miles upstream	Rainbow
3F	Beaver Dam Creek	8 Mi.	Mouth to 7.6 miles upstream	Rainbow
3G	Nolin River Lake Tailwater	2 Mi.	Dam to 1.5 miles downstream	Rainbow
3H	Roundstone Creek	2 Mi.	Upstream from point 6.5 miles above confluence	Rainbow
3I	Lynn Camp Creek	5 Mi.	Downstream from Hwy 936	Rainbow
3J	Goose Creek	1 Mi.	5.0 miles upstream from confluence with Green River	Rainbow



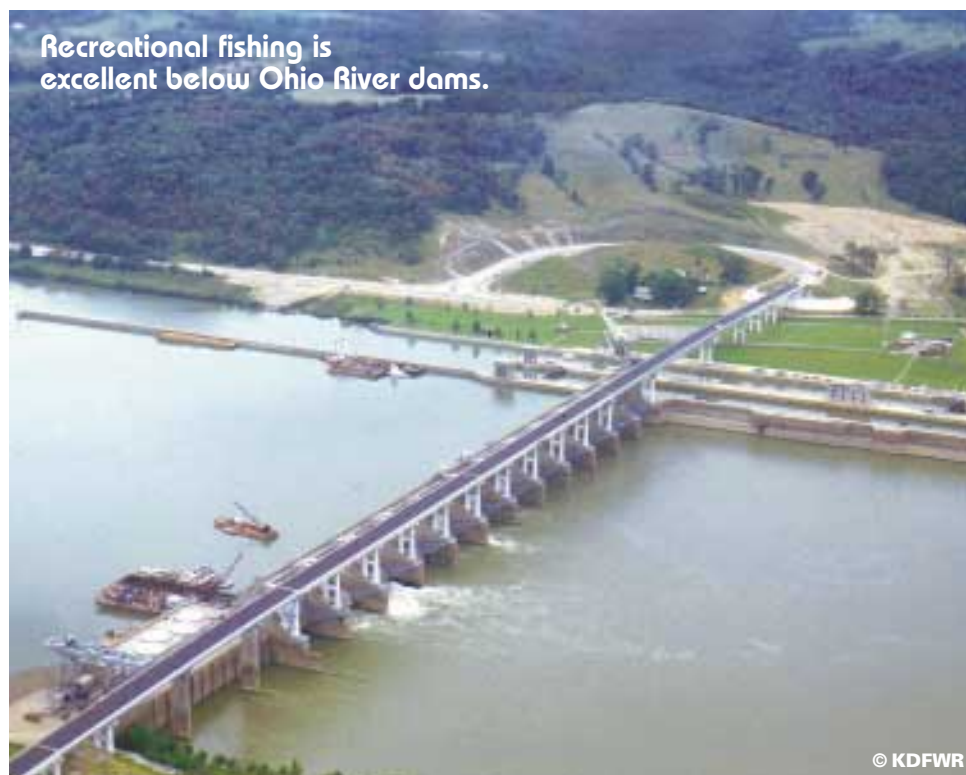
Upper Green River Basin Index

See Map on p.12+13

Site	Water Body	Area Name	Directions	Shoreline	Boat Ramp	Ramp Type	Ramp Surface	Launch Lanes	Parking	Capacity	Ramp Fee	Courtesy Dock	Handicap Pier	Picnic	Camp	Restrooms	Marina
1	Mill Creek Lake		KY 163 S of Tompkinsville to Boles-Tompkinsville Road; right at second entrance to city park. Note: 130-acre lake	●	●	B	P	S	U	< 25	Free			●			
2	Barren River	Holland Bridge	KY 100 SE of Scottsville (8.5 miles)	●					U	< 25	Free						
3	Long Creek	Long Creek Unit, Barren River WMA	KY 100 SE of Scottsville (6 miles)	●					U	< 25	Free						
4	West Fk. Drakes Creek	Franklin Ramp	KY 73 E (Old KY 100) of Franklin (2.5 miles)	●	●	B	P	S	U	< 25	Free						
5	Skaggs Creek	Skaggs Creek Unit WMA	US 31E SW of Glasgow; left on Mathews Mill Road; right at Skaggs Creek	●	●	C			U	< 25	Free						
6	Barren River	Claypool Ramp	KY 234 E of Bowling Green for 14 miles; right on KY 961; left on gravel road	●	●	B	P	S	U	< 25	Free						
7	Basil Griffin Pk.		US 231 S of Bowling Green; right on KY 884 (2 miles); right on Smallhouse Road. Note: 25-acre lake	○	●	C			P	< 25	Free		○		○		
8	Barren River	Potter/Combs Ramp	US 31W N of Bowling Green; right on Old Louisville Road	●	●	A	P	S	U	< 25	Free						
9	Barren River	Beach Bend Park Ramp	US 31W NE of Bowling Green (2.5 miles); left on Beach Bend Road; right on Beach Bend Park Road	●	●	B	P	S	P	< 25	Free				●	●	
10	Barren River	Boat Landing Road Ramp	KY 185 N of Bowling Green for 1/4 mile; left on Boat Landing Road	●	●	B	P	S	P	< 25	Free						
11	Barren River	Greencastle Ramp	KY 185 N of Bowling Green (6 miles); left on KY 263 (3 miles); left on Greencastle Road	●	●	B	P	S	U	< 25	Free						
12	Barren River	Riverside	KY 186 N of Bowling Green (6 miles); left on KY 263 (8 miles); left on Ridge Road to access site	●	●	B	P	S	U	< 25	Free						
13	Shanty Hollow Lake		US 185 N of Bowling Green; right on Lake Road (Hwy 1037) (2.5 miles); left on access road. Note: 135-acre lake	●	●	B	P	S	U	< 25	Free						
14	Green River	Arrue Young Ramp	KY 185 N of Bowling Green for 11 miles; right on Hwy 1749	●	●	B	P	S	U	< 25	Free						
15	Green River	Lock & Dam #5 Ramp	KY 185 N of Bowling Green for 11 miles; right on Hwy 1749 (1/4 mile); left on gravel road	●	●	B	P	S	U	< 25	Free						
16	Green River	Bear Creek Ramp	KY 70 W of Brownsville; left on KY 655 to Segal; left on Mouth of Bear Creek Road	●	●	B	U	S	U	< 25	Free						
17	Green River	Brownsville City Park	Webb Road in Brownsville	●	●	B	P	S	P	< 25	Free						
18	Green River	Houchins Ferry	KY 259 S of Brownsville (1 mile); left on Ollie Road	○	○	B	P	S	U	< 25	Free						
19	Green River	Mammoth Cave Ferry	KY 70 E of Brownsville (9 miles); left on Job Corps Road; left on Maple Springs Ranger Station Road	●	●	B	P	S	P	< 25	Free		●	●			
20	Green River	Munfordville - Stovall Park	US 31W S of Munfordville to edge of town	●	●	B	P	S	U	< 25	Free		●				
21	Green River	H.H. Wilson Park	KY 357 N of Munfordville (1.5 miles); right on Hwy 2185 (3/4 mile); on right	●	●	B	P	S	U	< 25	Free						
22	Green River	Greensburg Ramp	In Greensburg in city park		○	B	U	S	U	< 25	Free		○				
23	Green River	Roachville	KY 70 E of Greensburg; right on Black Gnat-Whitewood Road; right on KY 3098 to river		●	B	U	S	U	< 25	Free						
24	Green River	Neatsville Bridge	KY 206 NE of Columbia (13 miles)		○	B		S	U	< 25	Free						
25	Liberty Lake		US 127 N in Liberty; right on KY 70; right on Water Plant Road. Note: 79-acre lake; requires \$10 city permit to fish lake; no ramp user fee	●	●	B	U	S	U	< 25	Free						
26	Spurlington Lake		KY 55 N of Campbellsville for 3.5 miles; right on Sportsman Lake Road. Note: 36-acre lake	●	●	B	P	S	U	< 25	Free						
27	Campbellsville City Lake	City Lake	KY 289 N of Campbellsville (1.5 miles). Note: 63-acre lake; member lake - fee fishing	○	○	C			P	< 25	\$		○		○		
28	McDougal Lake		KY 210 SE of Hodgenville (4 miles); left on Hwy 470 (1.3 miles); left on gravel road. Note: 90-acre lake	●	●	B	U	S	U	< 25	Free						
29	Salem Lake		KY 210 NW of Hodgenville; right on Hwy 2217 (1.5 miles); right to lake. Note: 99-acre lake	◆	◆	B	U	S	U	26-50	Free						
30	Little Barren River	Sulphur Well Park	US 68 NE of Edmonton (9.3 miles); left on KY 70 W (left); past Sulphur Well	●	●	B	U	S	U	< 25	Free		●		●		
31	County Lake		US 68 NE of Edmonton (4 miles); left on Fountain-Mitchell Road; right on Foundation Church Road. Note: 22-acre lake	●	●	C			P	< 25	Free		●				
32	East Fk. Little Barren River		US 68 N of Edmonton (4.5 miles); right on Ky 544 (0.7 mile) to bridge. Note: private property; small state easement pull-off; pool near bridge	●	●	C			U	< 25	Free						
33	City Lake		KY 80 N of Edmonton; left on US 68 (1/2 mile) to lake. Note: 5-acre lake	●	●	C			U	< 25	Free		●				



Locking Through Dams



All fishing boats not locking through a dam on the Ohio River are prohibited from entering approach channels to the locks within the limits of the arrival points

Safety Guidelines:

- Obey the lockmaster and wait for signals to enter and depart.
- Give directions to your passenger for handling lines.
- Everyone wear his or her PFD's.
- Shut off the motor.
- Have at least one 150-foot mooring line ready.
- Hang boat fenders on both sides of the boat.
- Be ready to pass lines to the lock attendants to secure the craft safely to the lock wall.
- Follow the attendants' instructions for paying out or taking in lines as the water level rises or falls.

When the process is completed, release the lines on instruction from the attendant, wait for the signal to leave, and then proceed slowly out of the lock.



Catch & Release

The catch and release of fish in a healthy state is an excellent conservation tool.

When releasing a fish:

- Keep the fish in the water as much as possible.
- Do not allow the fish to flop in the boat or on the ground; the use of a net will assist you in controlling the fish.
- Gently handle the fish with wet hands and do not squeeze the fish or touch the gill or eye areas.
- Clip the line close to the mouth before releasing deeply hooked fish - don't attempt to remove the hook.
- Immobilize trout by holding them upside down and grasp black bass by the lower jaw.
- Remove hooks quickly utilizing needle-nosed pliers.
- Slide the fish back and forth through the water a few times to help reorient; this sometimes aids in its recovery.

Striped bass - adult striped bass are very susceptible to delayed mortality following their release, even though these fish may initially appear in good condition. This is particularly a problem when water temperatures exceed 70 degrees. It is best not to release legal sized striped bass during this time.



Federal Aid Project
funded by your purchase
of fishing equipment
and motor boat fuels

Barren River Lake Index

Site	Water Body	Ramp Name	Directions	Shoreline	Boat Ramp	Ramp Type	Ramp Surface	Launch Lanes	Parking	Capacity	Ramp Fee	Courtesy Dock	Handicap Pier	Picnic	Camp	Restrooms	Marina
1	Barren River	Barren River Lake Tailwater	US 31E NE of Scottsville; left on KY 252; left on road before crossing dam	●	●	B	P	S	U	< 25	Free		●	●	●		
2	Barren River Lake	Gilligans Island	US 31E SW of Glasgow; right on KY 252 (10 miles); left on Corps road (fee parking)	●	●	B	P	M	U				●	●	●	●	
3	Barren River Lake	Peninsula Ramp	US 31E SW of Glasgow; right on KY 252; left on Sawyers Landing Road	●	●	B	P	M	P	26-50	\$	Yes				●	○
4	Barren River Lake	Baileys Point Ramp	US 31E NE of Scottsville; left on KY 252; right on KY 517	●	●	B	P	M	P	< 25	\$			●	●	●	
5	Barren River Lake	Narrows Ramp	US 31E SW of Glasgow; right on Hwy 1318	●	●	B	P	M	P	26-50	\$			●	●	●	○
6	Barren River Lake	Beaver Creek Ramp	US 31E SW of Glasgow; right on Hwy 1342; follow signs	◆	◆	B	P	M	P	26-50	\$		◆	◆	◆	◆	
7	Barren River Lake	Barren River Lake WMA	US 31E SW of Glasgow; right on Hwy 1318; left on Lucas Road (old US 31E)	●	●	C			U		Free						
8	Barren River Lake	State Park Ramp	US 31E SW of Glasgow; right at state park entrance	●	●	B	P	M	P	26-50	Free	Yes		●	●	●	○
9	Barren River Lake	Austin Ramp	US 31E SW of Glasgow; left on KY 87; right on Hwy 1342 (Boat Ramp Road)	◆	◆	B	P	M	P	< 25	Free					◆	
10	Barren River Lake	Walnut Creek Ramp	KY 98 E of Scottsville; left on Hwy 1855 (2.5 miles)	●	◆	B	P	M	P	< 25	Free			●	●	◆	◇
11	Barren River Lake	Dry Creek Unit WMA	US 31E SW of Glasgow; left on KY 87; right on Bradshaw Road; right to WMA	●	●	C			U		Free						
12	Barren River Lake	Browns Ford Ramp	KY 98 E of Scottsville (9 miles)	●	◆	B	P	M	P	< 25	\$					●	

Index Legend

A	"A" Ramp - any trailerable recreational boat	
B	"B" Ramp - any LIGHT trailerable recreational boat	
C	"C" Ramp - carry-down only	
S	Single launch lane	Handicap Accessible
M	Multiple launch lanes	Year-round 24 hours
P	Paved ramp/parking lot	Year-round limited hours
U	Unpaved ramp/parking lot	Seasonal 24 hours
<25	Number of vehicles	Seasonal limited hours



Barren River Lake

COE Resource Manager's Office
U.S. Army Corps of Engineers
1108A Finney Road
Glasgow, KY 42141-9642
270-646-2055

Fishing Information:
270-646-2122



Maps Available

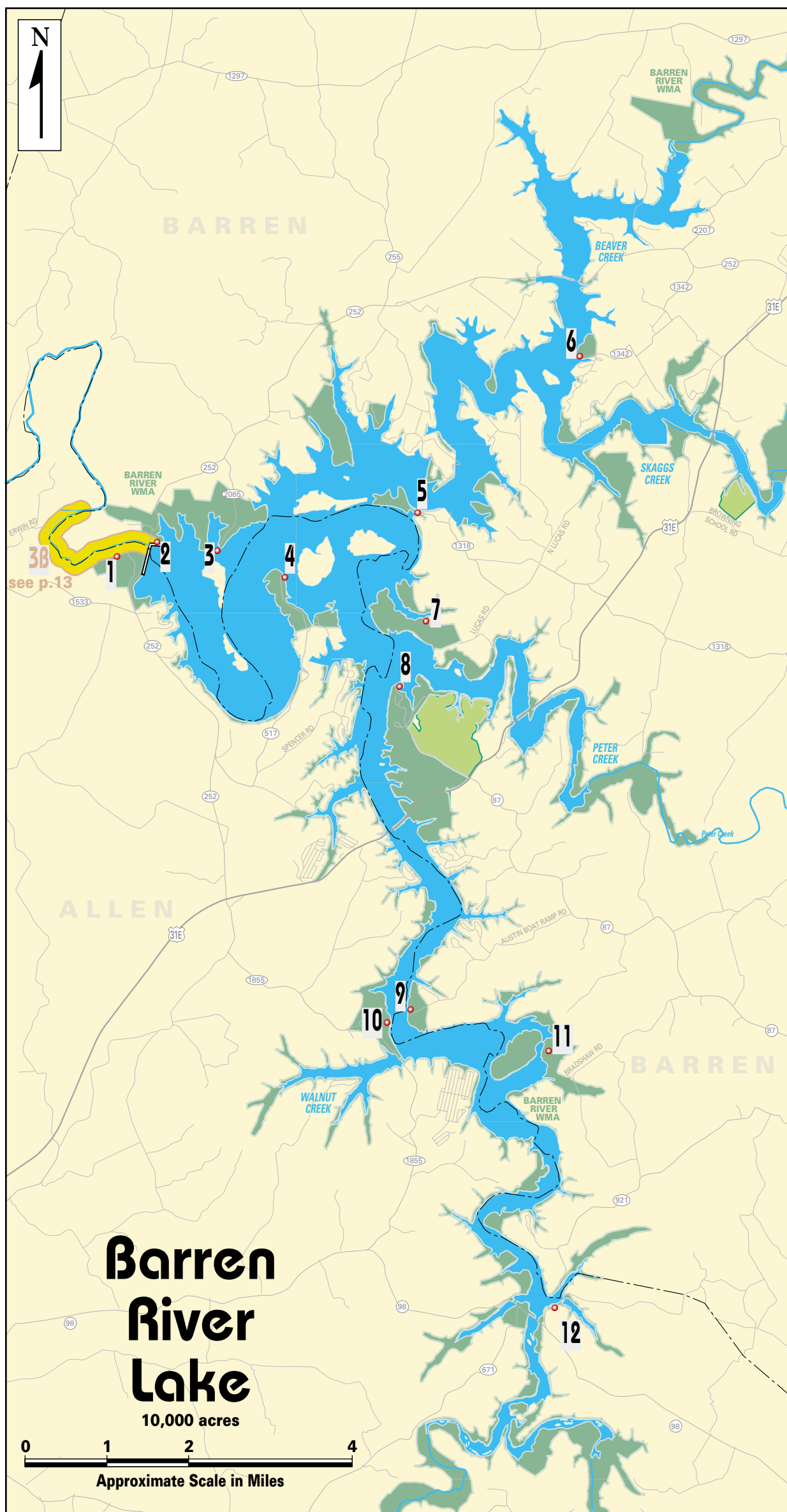
Topographic and detailed maps of most major lakes may be purchased:

Maps & Publications
133 Holmes Street
Frankfort, KY 40601
502-564-4715
(credit cards accepted)



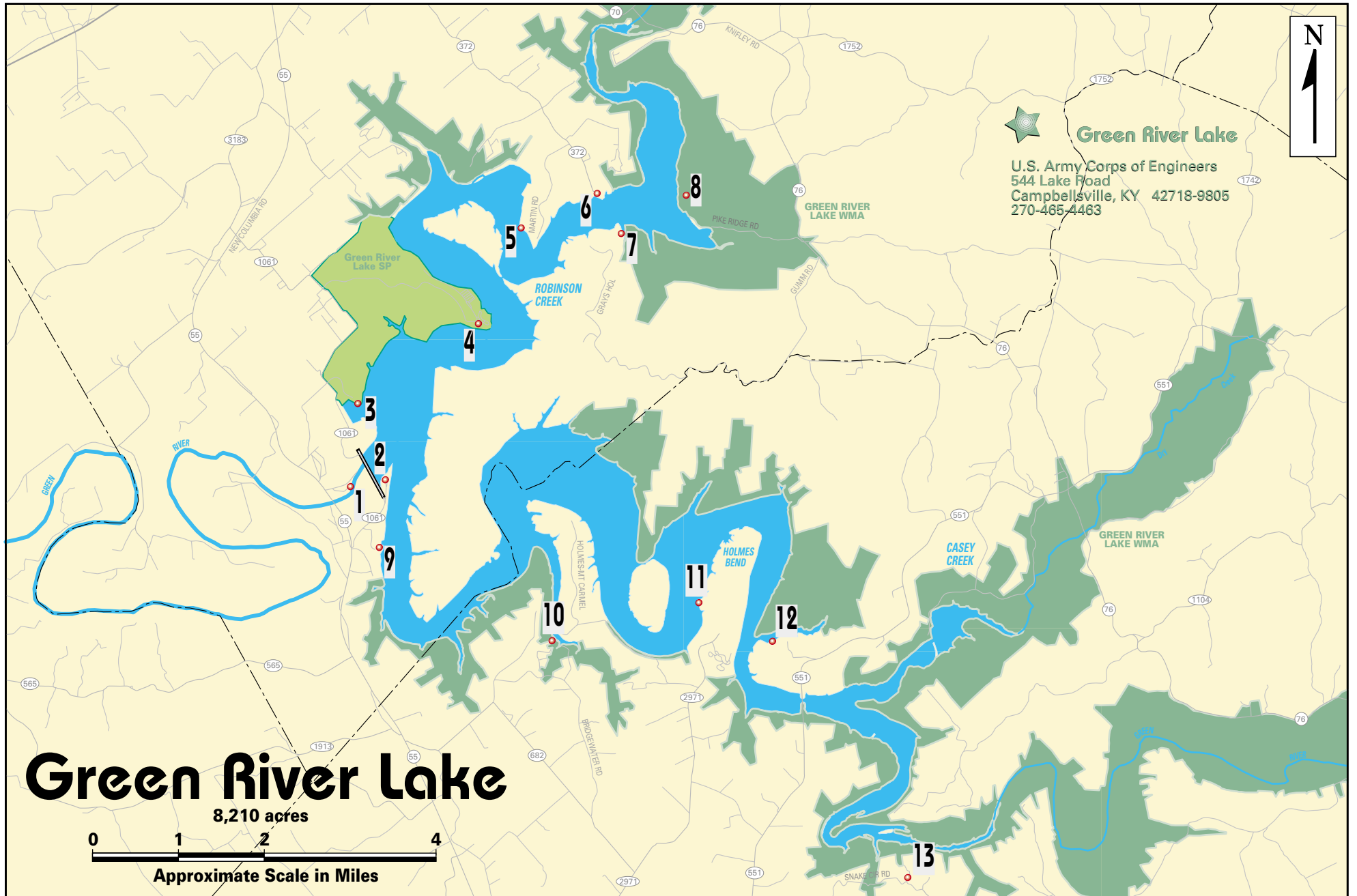
Littering (KRS 433.757)

The operator of any motorboat or vessel is responsible for any litter thrown into the water. Litter is not only unsightly, but can be dangerous to humans and animals. For example, fishing line discarded into the water can be hazardous to wildlife and to a boat's lower unit. Animals can be ensnared in the line and die. Fishing line caught on a prop shaft can cause seal leaks and lower unit failure.



Green River Lake Index

SITE	Water Body	Ramp Name	Directions	Shoreline	Boat Ramp	Ramp Type	Ramp Surface	Launch Lanes	Parking	Capacity	Ramp Fee	Courtesy Dock	Handicap Pier	Picnic	Camp	Restrooms	Marina
1	Green River Lake	Tailwater	KY 55 S of Campbellsville; left at signs before crossing Green River	●	●	B	P	S	U	< 25	Free				●	◆	
2	Green River Lake	Corps Office	KY 55 S of Campbellsville (4.5 miles); left at Corps of Engineers sign; 2nd road to right	●	●	B	P		U	26-50	Free						
3	Green River Lake	State Marina	KY 55 S of Campbellsville (2 miles); left on Hwy 1061; follow signs to marina	●	●	B	P	M	P	26-50	Free					●	○
4	Green River Lake	State Park / Lone Valley Site	KY 55 S of Campbellsville (2 miles); left on Hwy 1061; left at park entrance Note: 2 ramps in park; 1 for campground only	●	●	B	P	M	P	26-50	Free	Yes		●	●	●	
5	Green River Lake	Emerald Isle Marina	KY 372 S of Campbellsville (2.5 miles); right on County Park Road	●	●	B	P	S	P	26-50	\$	Yes			●	○	
6	Green River Lake	Smith Ridge	KY 372 E of Campbellsville (3 miles) to ramp	●	●	B	P	M	P	26-50	\$					●	
7	Green River Lake	Pikes Ridge	KY 70 E of Campbellsville (2.5 miles); right on KY 76; right on Pikes Ridge Road	●	●	B	P	M	U	< 25	\$			●	●	●	
8	Green River Lake	Wilson Creek	KY 70 E of Campbellsville (2.5 miles); right on KY 76 to Wilson Creek Road	●	●	C			U	< 25	Free						
9	Green River Lake	Ramp #1	KY 55 S of Campbellsville (4.5 miles); L. at entrance to Corps of Engineers office; follow signs to ramp	●	●	B	P	M	P	< 25	\$	Yes				●	
10	Green River Lake	Butler Creek Ramp	Kentucky 55 N of Columbia; right on KY 682; left on Bridge Water Road; left at sign	●	◆	B	P	S	P		Free			●			
11	Green River Lake	Holmes Bend Ramp	KY 55 N of Columbia; right on KY 551; left on Holmes Bend Road	●	●	A	P	M	P	26-50	Free	Yes				●	○
12	Green River Lake	White Oak Ramp	KY 55 N of Columbia; right on KY 551; left on first road after crossing lake	●	●	C			U	< 25	Free						
13	Green River Lake	Snake Creek (on Green River WMA)	KY 55 N of Columbia; right on KY 551; right on Snake Creek Road (2 miles); left on gravel road	◆	◆	C			U	< 25	Free						



Muskellunge Waters

- | | | |
|--------------------|--|-----------------------------|
| Lakes | Streams | |
| • Cave Run Lake | • Green River (below Green River Lake) | • South Fork Kentucky River |
| • Green River Lake | • Barren River (below Barren River Lake) | • North Fork Kentucky River |
| • Buckhorn Lake | • North Fork Triplett Creek | • Tygarts Creek |
| | • Little Sandy River | • Drakes Creek |
| | • Red River | • Kinniconick Creek |
| | • Kentucky River | |

Index Legend

A	"A" Ramp - any trailerable recreational boat	♿	Handicap Accessible
B	"B" Ramp - any LIGHT trailerable recreational boat	●	Year-round 24 hours
C	"C" Ramp - carry-down only	○	Year-round limited hours
S	Single launch lane	◆	Seasonal 24 hours
M	Multiple launch lanes	◇	Seasonal limited hours
P	Paved ramp/parking lot		
U	Unpaved ramp/parking lot		
<25	Number of vehicles		

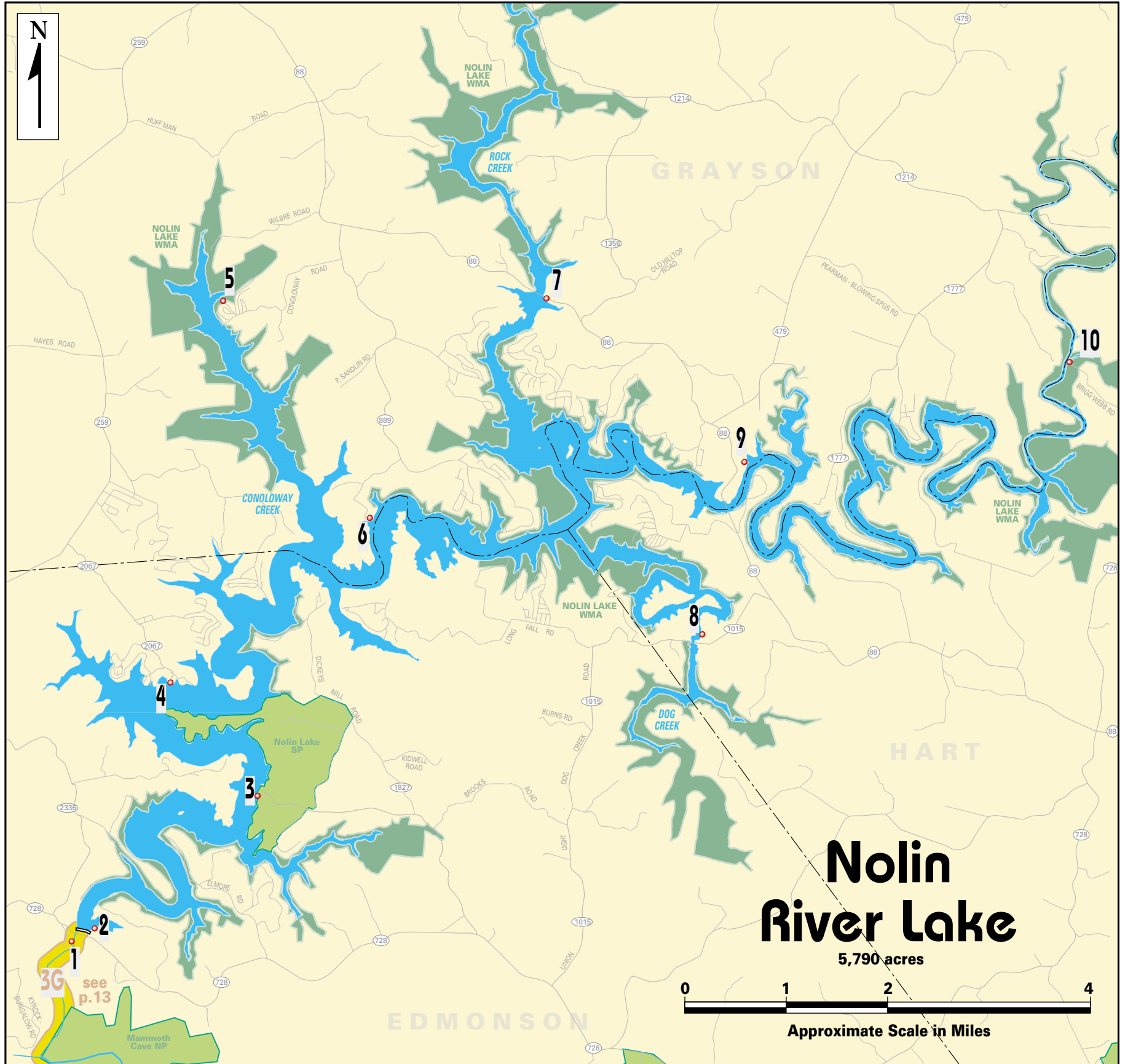


Muskellunge are Kentucky's largest native sportfish

© KDFWR

Nolin River Lake Index

SITE	Water Body	Area Name	Directions	Shoreline	Boat Ramp	Ramp Type	Ramp Surface	Launch Lanes	Parking	Capacity	Ramp Fee	Courtesy Dock	Handicap Pier	Picnic	Camp	Restrooms	Marina
1	Nolin River	Nolin River Lake Tailwater	KY 259 N of Brownsville; right on KY 728; follow signs to tailwater area	●	●	B	U	S	P	< 25	Free			●		◆	
2	Nolin River Lake	Dam Ramp	KY 259 N of Brownsville; Hwy 728 E; follow signs to ramp	●	●	A	P	M	P	50 +	\$			●		◆	
3	Nolin River Lake	Brier Creek Ramp	KY 259 N of Brownsville; KY 728 E; Hwy 1827 N; follow signs to ramp	●	●	A	P	M	P	50 +	\$			●	●	●	
4	Nolin River Lake	Moutardier Ramp	KY 259 N of Brownsville; right on Hwy 2067; boat ramp at end of road	●	●	A	P	M	P	50 +	\$			●	●	●	○
5	Nolin River Lake	Conoloway Ramp	KY 259 S of Leitchfield to Smitty City; left on KY 226 to Peonia; right on KY 88 to Conoloway Road	●	●	B	P	S	U	< 25	Free						
6	Nolin River Lake	Ponderosa	KY 259 S of Leitchfield to Smitty City; left on KY 226 to Peonia; right on KY 88; right on KY 889; right to Ponderosa Camp	●	●	B	P	S	P	< 25	Free						
7	Nolin River Lake	Iberia	KY 259 S of Leitchfield to Smitty City; left on KY 226 to Peonia; right on KY 88 to Iberia sign	◆	◆	A	P	M	P	50 +	\$					○	
8	Nolin River Lake	Dog Creek Ramp	KY 88 NW of Munfordsville (15 miles); follow signs	●	◆	A	P	M	P	26-50	\$			●	●	◆	
9	Nolin River Lake	Wax Ramp	KY 259 S of Leitchfield to Smitty City; left on KY 226 to Peonia; right on KY 88	●	●	A	P	M	P	50 +	\$			●	●	●	○
10	Nolin River Lake	Bacon Creek	KY 88 NW of Munfordsville (11.5 miles); right on KY 728 to Brigg Webb Road	◆	◆	B	P	S	U	< 25	Free						



Nolin River Lake

U.S. Army Corps of Engineers
 PO Box 339
 Bee Springs, KY 42207
 270-286-4511

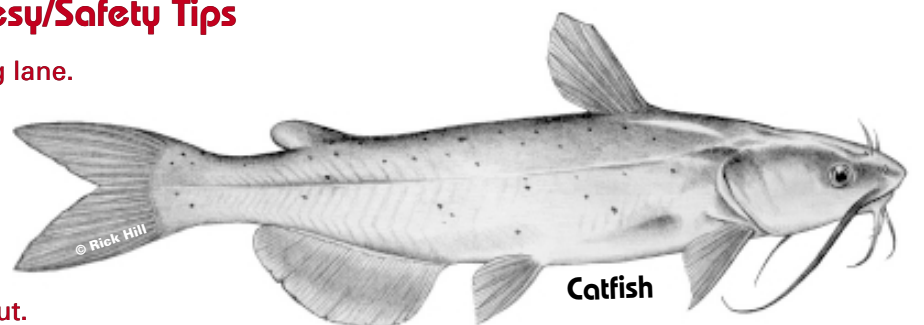
Boat Launching and Retrieving Courtesy/Safety Tips

- Prepare boat for launching at top ramp clear of launching lane.
- Remove all tie-down straps.
 - Insert boat plugs.
 - Remove winch line after boat is in water.

- Following launching
- Park boat to side of ramp, clear of the launching lane
 - Park trailer in designated parking area.

During loading - always hook winch line before pulling out.

Secure boat and belongings at top of ramp - clear of launching lanes.



Catfish