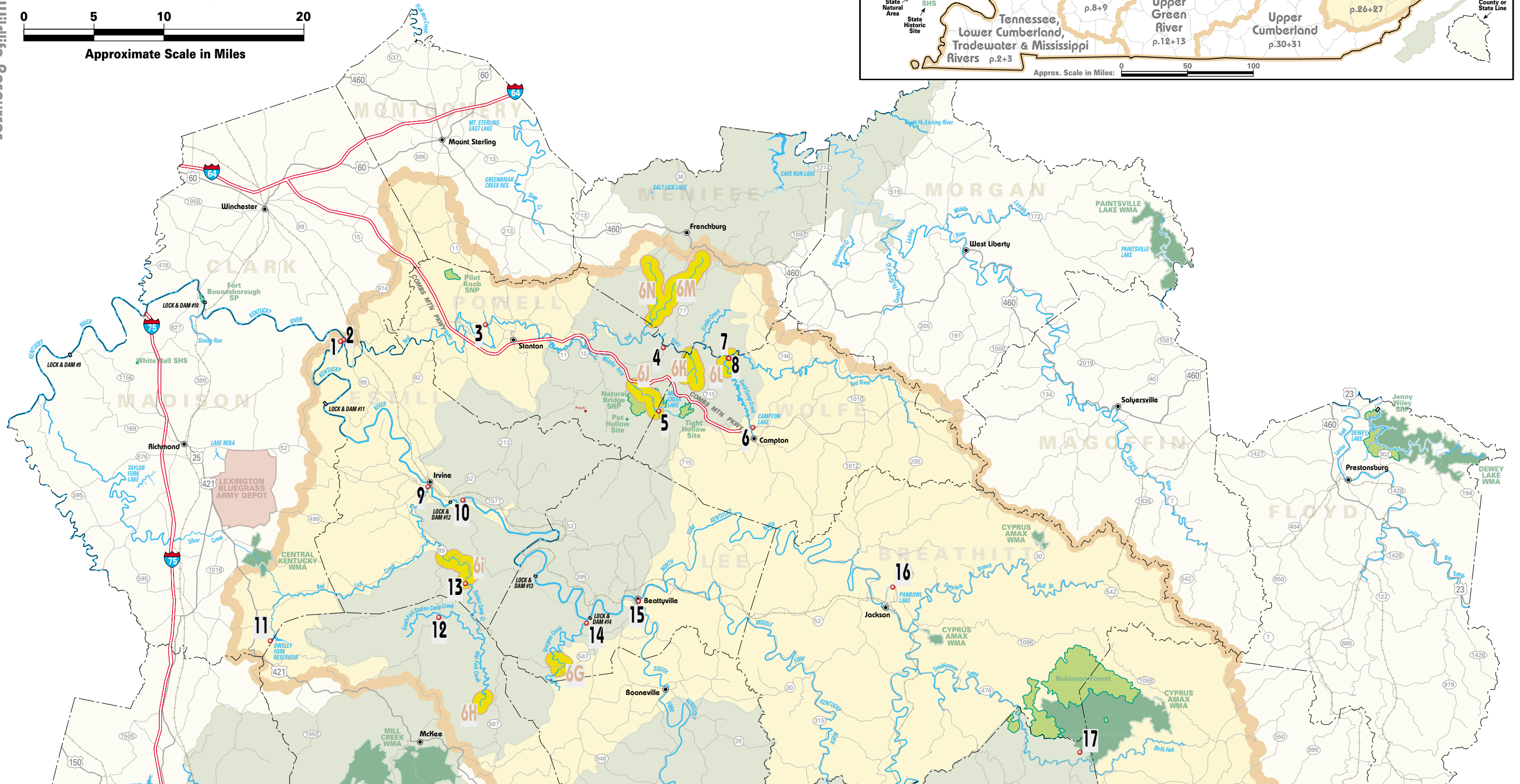
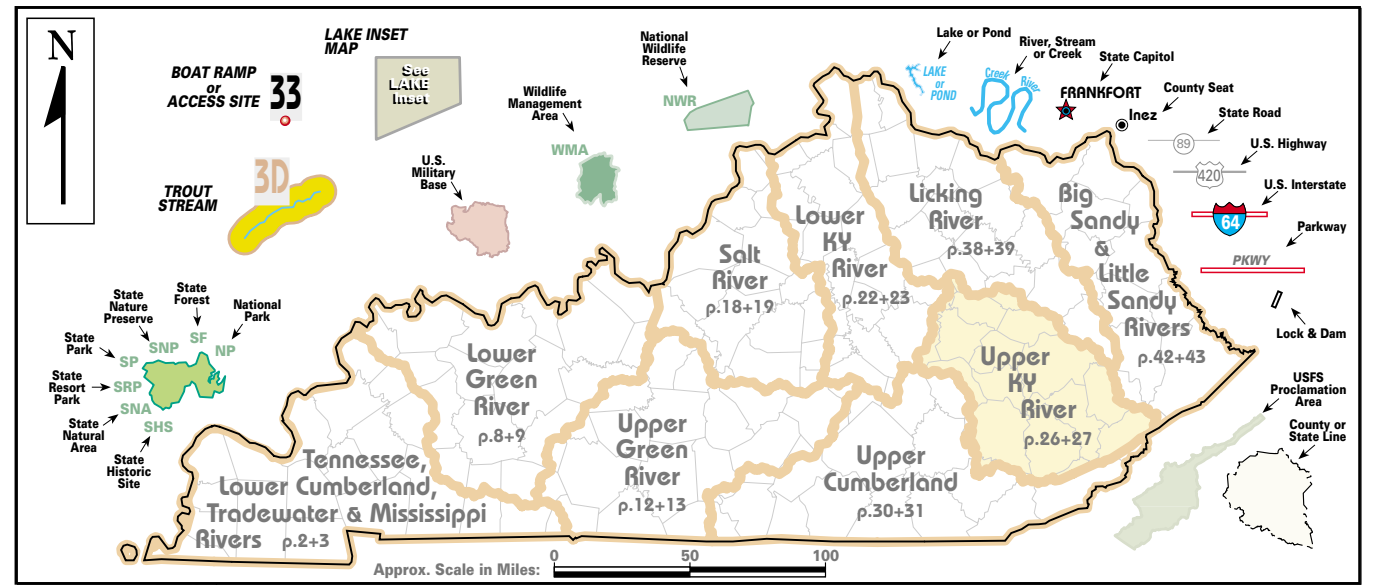
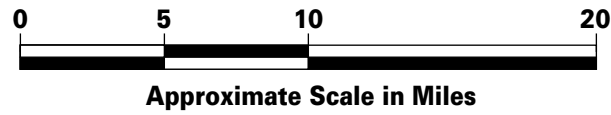
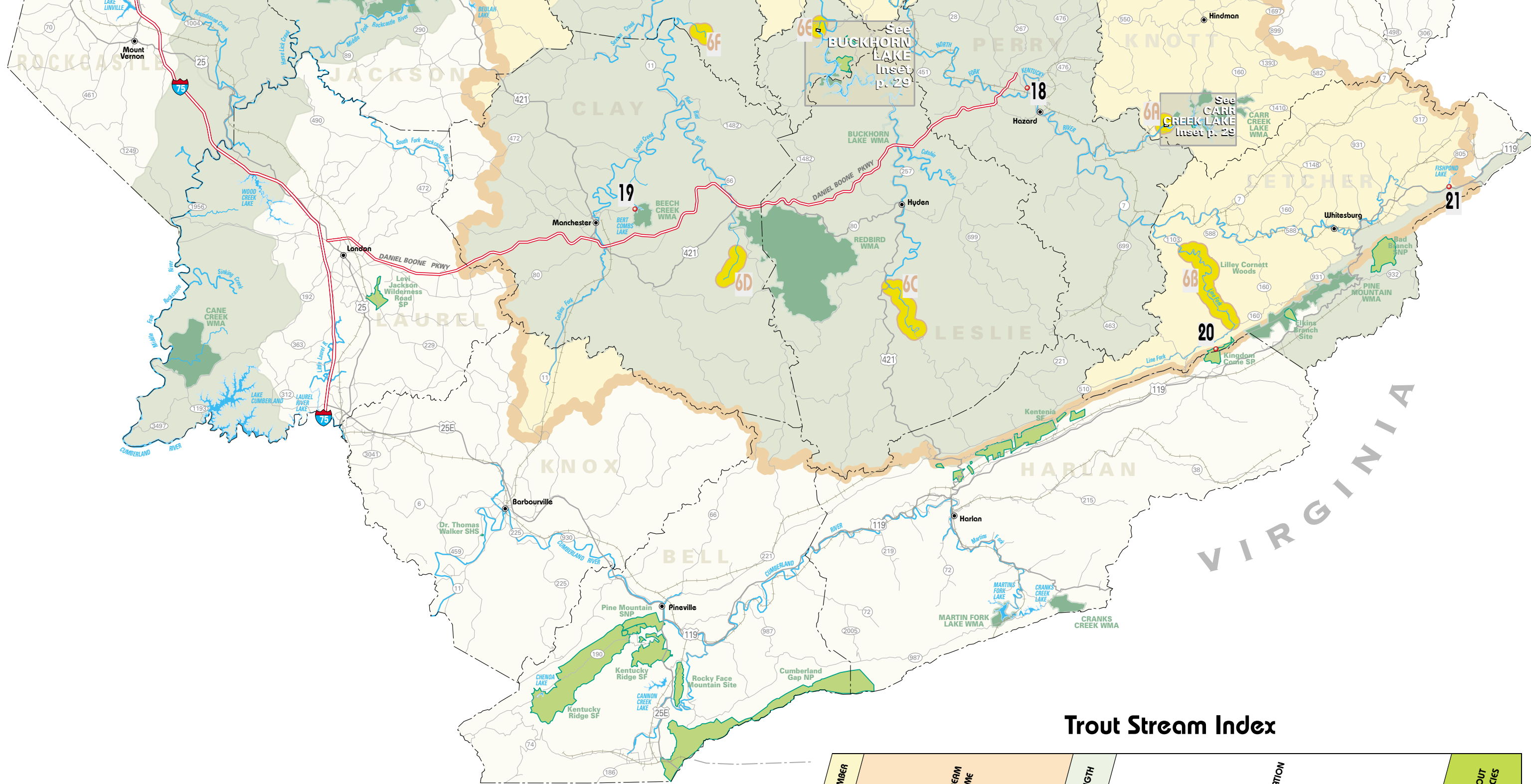


# UPPER KENTUCKY RIVER BASIN

See Basin Index on p.28





### Trout Stream Index

NUMBER	STREAM NAME	LENGTH	LOCATION	TROUT SPECIES
6A	Carr Creek Lake Tailwater	1 Mi.	Dam to 0.5 mile downstream	Rainbow
6B	Line Fork	10 Mi.	Downstream from Hwy 160	Rainbow
6C	Greasy Creek	8 Mi.	Mouth to 4.5 miles upstream	Rainbow
6D	Big Double Creek	1 Mi.	Miles 1.7 - 2.9 beginning 2.0 miles upstream from Hwy 421	Rainbow
6E	Buckhorn Lake Tailwater	1 Mi.	Dam to 0.5 mile downstream	Rainbow
6F	Right Fork Buffalo Creek	0.2 Mi.	Mile 1.9 - 2.1 beginning 2.0 miles downstream of headwater	Rainbow
6G	Sturgeon Creek	2 Mi.	Hwy 587 bisects trout segment	Rainbow
6H	War Fork	1 Mi.	Downstream of War Fork Rd.	Rainbow
6I	Station Camp Creek	3 Mi.	Miles 14.0-17.0 upstream from Hwy 89	Rainbow
6J	Middle Fork Red River	2 Mi.	Miles 9.4 - 11.0 upstream from Bert Combs Mountain Parkway	Rainbow
6K	Chimney Top Creek	3 Mi.	Mouth of creek to 2.3 miles upstream and 1.0 mile up Right Fork	Brown
6L	Swift Camp Creek	1 Mi.	Mouth to 1.2 miles upstream	Rainbow
6M	East Fork Indian Creek	7 Mi.	Mouth of creek to 7.3 miles upstream	Brown/Rainbow
6N	Indian Creek	4 Mi.	Upstream of confluence with East Fork	Brown

# Upper Kentucky River Basin Index

See Map on p.26+27

SITE	Water Body	Area Name	Directions	Shoreline	Boat Ramp	Ramp Type	Ramp Surface	Launch Lanes	Parking	Capacity	Ramp Fee	Courtesy Dock	Handicap Pier	Picnic	Camp	Restrooms	Marina
1	Kentucky River	Merritt	KY 89 SE of Winchester (11.2 miles); R. on Lamore Ferry Rd to Merritt (end of road - ferry crossing)	○	B	P	S	U	U	< 25	\$						
2	Kentucky River	Across from mouth of Red River	US 52 E of Richmond to Waco; left on KY 977 to Kentucky River	●	B	U	S	U	U	< 25	Free						
3	Beech Fk.	Stanton Reservoir	KY 213 NW of Stanton; left on KY 615; left on Beech Fork Road; water plant and gravel road to lake on right. Note: 61-acre lake; electric motor only	○	B	P	S	U	U	< 25	Free						
4	Red River	Hwy 77 Bridge	US 460 SE of Frenchburg; Hwy 77 S; follow to bridge over river	●	C				U	< 25	Free						
5	Mill Creek Lake	Natural Bridge SP	W on Mountain Parkway from Campton; KY 11 S (Exit 33); entrance past State Park on Left. Note: 41-acre lake; electric motors only	○	B	P	S	P	P	26-50	Free		○	◇			
6	Campton Lake		KY 191 N of Campton; left on KY 746; left on Hiran Branch Road. Note: 26-acre lake; walk-in only	●					U		Free						
7	Red River	Hwy 715 Bridge Site	US 460 SE of Frenchburg; Hwy 77 S; KY 715 E to bridge over Red River; on right	●	C				U	< 25	Free						
8	Red River	715 Bridge	KY 15 NW of Campton; right on KY 715; site below bridge in Red River Gorge Geological area. Note: limited roadside parking	●					U	< 25	Free						
9	Kentucky River	Irvine Ramp	52 W of Irvine to junction of Ky 89; ramp on W side of bridge	●	B	P	S	P	P	< 25	\$						
10	Kentucky River	Ravenna	KY 52 E of Irvine to Ravenna; Hwy 1571 SE of Ravenna (1 mile)	●	B	P	S	U	U	< 25	\$						
11	Owsley Fk. Res.		US 421 S of Richmond; left on KY 21 near Big Hill. Note: 203-acre lake; very limited parking; part of lake in Jackson County	●	B	U	S	U	U	< 25	Free						
12	South Fk. Station Camp	Hwy 89 Access	KY 89 N of McKee at bridge	●	C				U	< 25	Free						
13	Station Camp Creek	Alumbaugh	KY 89 S of Irvine; L. on Hwy 1209 to junction of Jakes Heavenly Hwy (concrete ford across creek)	●	C				U	< 25	Free						
14	Kentucky River	Heidelberg Ramp	KY 11 S of Beattyville; right on KY 587; right on KY 399; right to river	●	B	P	S	U	U	< 25	Free						
15	North Fk. Kentucky River	Beattyville Ramp	KY 52 in Beattyville	●	B	P	M	P	P	< 25	Free						
16	Pan Bowl Lake		KY 15 in Jackson; Hwy 1812 to lake Note: 93-acre lake	●	B	P	S	P	P	< 25	Free						
17	Cyprus Amax R'bson For. Ponds	Starfire Lake	KY 80 NE of Hazard; left on KY 476 to Ary; right on Hwy 1087 to Cyprus Amax WMA office. Note: 20-acre lake; open June 1 - December 31; daylight hours only	◇					U		Free						
18	North Fk. Kentucky River	Perry Co. Park Ramp, Hazard	KY 15 SE of Hazard to City Park Lane	●	B	P	S	U	U	< 25	Free						
19	Bert Combs Lake		Hwy 3432 (Beech Creek Road) E of Manchester; turn at water filtration plant. Note: 36-acre lake	●	B	P	S	U	U	< 25	Free						
20	Kingdom Come State Pk. Lake		US 119 S of Whitesburg to Cumberland; follow signs to park. Note: 3-acre lake; elec. motors only	●	B	P	S	P	P	< 25	Free		◆	◆	◆		
21	Fishpond Lake		US 119 N of Whitesburg to Hwy 3400. Note: 32-acre lake	●	B	P	S	P	P	< 25	Free		●				

Highly-prized walleye are native to Kentucky.



## Walleye Waters

### Lakes

- Lake Cumberland
- Laurel River Lake
- Nolin River Lake
- Carr Creek Lake
- Green River Lake
- Martins Fork Lake
- Paintsville Lake
- Dale Hollow Lake

### Streams

- Upper Cumberland River (above Cumberland Falls)
- Russell Fork (Pike County)
- Green River (below Green River Lake)
- Upper Kentucky River (above Lock & Dam #14)



## Trailer Safety Precautions

### Before leaving home:

- Be sure that the boat is secured properly on the trailer.
- Inspect all lines, tie-downs and the winch. Tighten as necessary and replace any that show signs of fraying or strand separation.
- Determine that all trailer lights are operating satisfactorily.
- Test the braking system.
- Inspect the hitch and safety chain.
- Check tire pressure and lug nuts.
- Tilt and secure the motor to increase road clearance.
- Take a trailer jack.

### On the road:

- Drive carefully, allowing for the extra length of the car and trailer when negotiating turns and when passing.
- Allow more time for stopping.
- Watch speed limits.
- Pull well off the road periodically and walk completely around the rig. Examine the tires and wheel bearings for over-heating. Test the tie-downs and check any gear which is being carried in the boat.

## Index Legend

A	"A" Ramp - any trailerable recreational boat	
B	"B" Ramp - any <b>LIGHT</b> trailerable recreational boat	
C	"C" Ramp - carry-down only	
S	Single launch lane	Handicap Accessible
M	Multiple launch lanes	Year-round 24 hours
P	Paved ramp/parking lot	Year-round limited hours
U	Unpaved ramp/parking lot	Seasonal 24 hours
<25	Number of vehicles	Seasonal limited hours

The Kentucky Department of Fish and Wildlife Resources constructs boat ramps for anglers and boaters.



## Buckhorn Lake Index

SITE	Water Body	Area Name	Directions	Shoreline	Boat Ramp	Ramp Type	Ramp Surface	Launch Lanes	Parking	Capacity	Ramp Fee	Courtesy Dock	Handicap Pier	Picnic	Camp	Restrooms	Marina
1	Buckhorn Lake	Tailwater	KY 15 N of Hazard; left on KY 28 to Buckhorn City; follow signs	●	●				P	26-50	Free			◆	◆	◆	
2	Buckhorn Lake	Dam Ramp	KY 15 N of Hazard; L. on KY 28 to Buckhorn; L. on Hwy 1387 to ramp. Note: camping 1 Apr-31 Oct; recommend calling ahead to check (606)398-7251; restrooms/picnic area 1/4 mi at tailwater area	●	●	B	P	S	P	< 25	Free			◆	◆	◆	
3	Buckhorn Lake	Gays Creek Ramp	KY 15 N of Hazard; left on KY 28; left on Hwy 1833; right on Hwy 2072. Note: winter ramp also; drive over mud flat	●	◆	B	P	S	P	< 25	Free						
4	Buckhorn Lake	Buckhorn Lake State Park Marina	KY 15 N of Hazard; left on KY 28; left on Hwy 1833 to Buckhorn State Park	●	●	A	P	S	P	26-50	Free						○
5	Buckhorn Lake	Leatherwood Ramp	KY 15 N of Hazard; left on KY 28 to Buckhorn; left on Hwy 2022; left on KY 484 to ramp.	●	◆	B	P	M	P	26-50	Free			◆		◆	
6	Buckhorn Lake	Trace Branch Ramp	KY 257 N of Hyden to Toulouse/Dry Hill Road (at parkway); follow to ramp	●	◆	B	P	S	P	< 25	Free			◆	◆	◆	
7	Buckhorn Lake	Confluence	KY 257 N of Hyden to confluence	●	◆	B	P	S	P	< 25	Free	Yes		◆	◆	◆	

## Carr Creek Lake Index

SITE	Water Body	Area Name	Directions	Shoreline	Boat Ramp	Ramp Type	Ramp Surface	Launch Lanes	Parking	Capacity	Ramp Fee	Courtesy Dock	Handicap Pier	Picnic	Camp	Restrooms	Marina
1	Carr Creek Lake	Tailwater	KY 160 SE of Hindman; right on KY 15 S to Sassafras; right on Sassafras Creek Road to dam; see signs	●	●				P	26-50	Free			◆	◆	◆	
2	Carr Creek Lake	Dam Ramp	KY 160 SE of Hindman; right on KY 15 S to Sassafras; right on Sassafras Creek Road to dam	●	●	A	P	M	P	50 +	\$			◆	◆	◆	
3	Carr Creek Lake	Carr Creek Marina	KY 160 SE of Hindman; right on KY 15 S; follow signs to marina	●	●	A	P	M	P	50 +	\$		●	●	◆	◆	●
4	Carr Creek Lake	Littcarr Ramp	KY 160 SE of Hindman to Littcarr; follow signs to ramp	●	●	A	P	M	P	26-50	\$		●	●	◆	◆	●

