

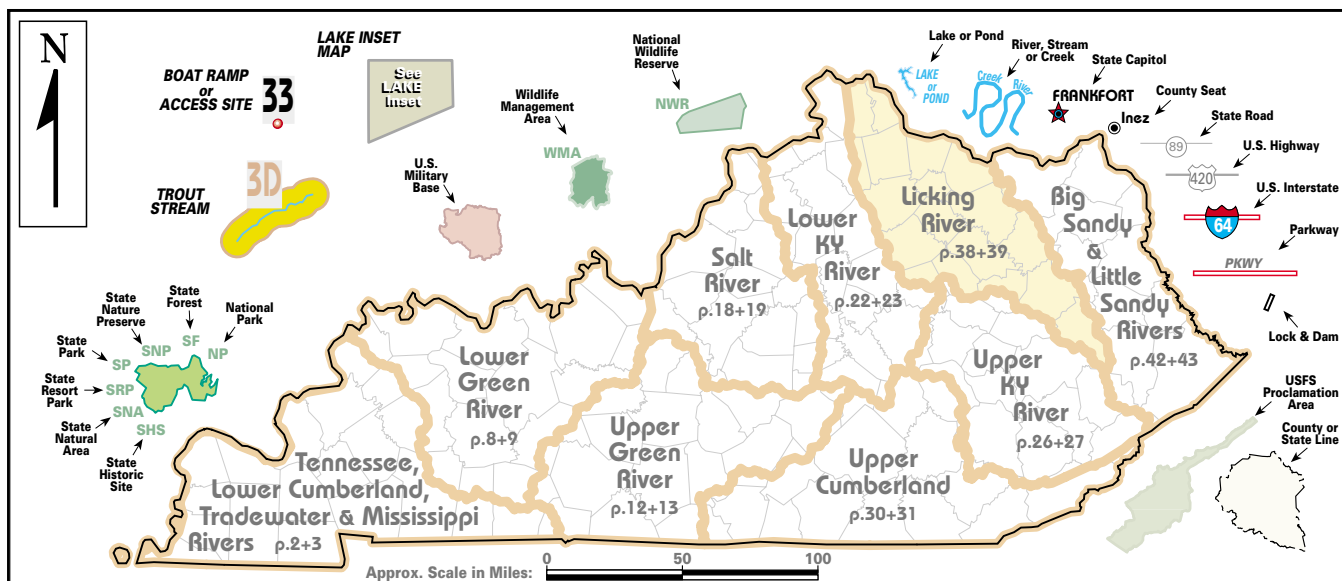
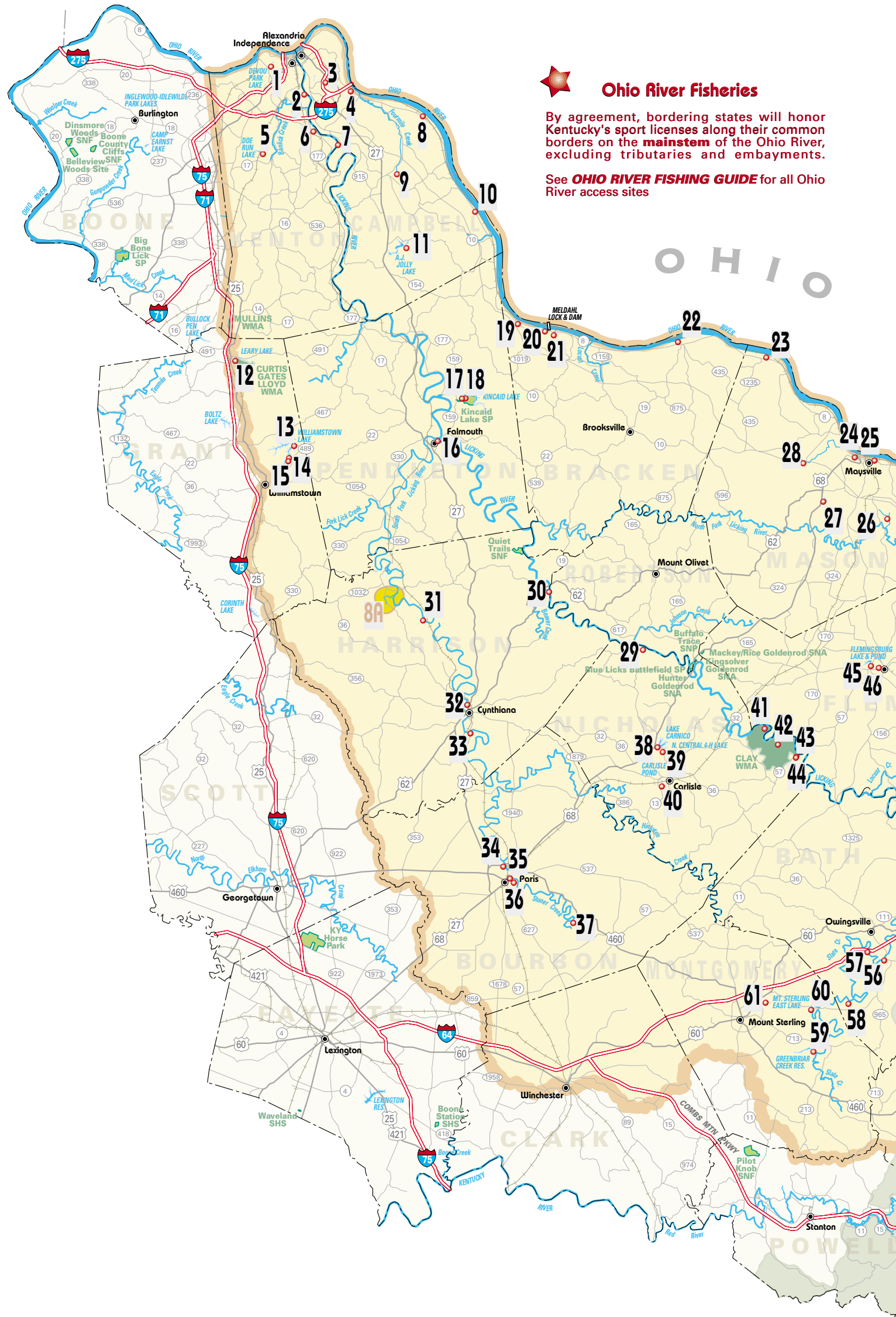
INDIANA



Ohio River Fisheries

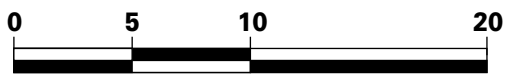
By agreement, bordering states will honor Kentucky's sport licenses along their common borders on the **mainstem** of the Ohio River, excluding tributaries and embayments.

See **OHIO RIVER FISHING GUIDE** for all Ohio River access sites



LICKING RIVER BASIN

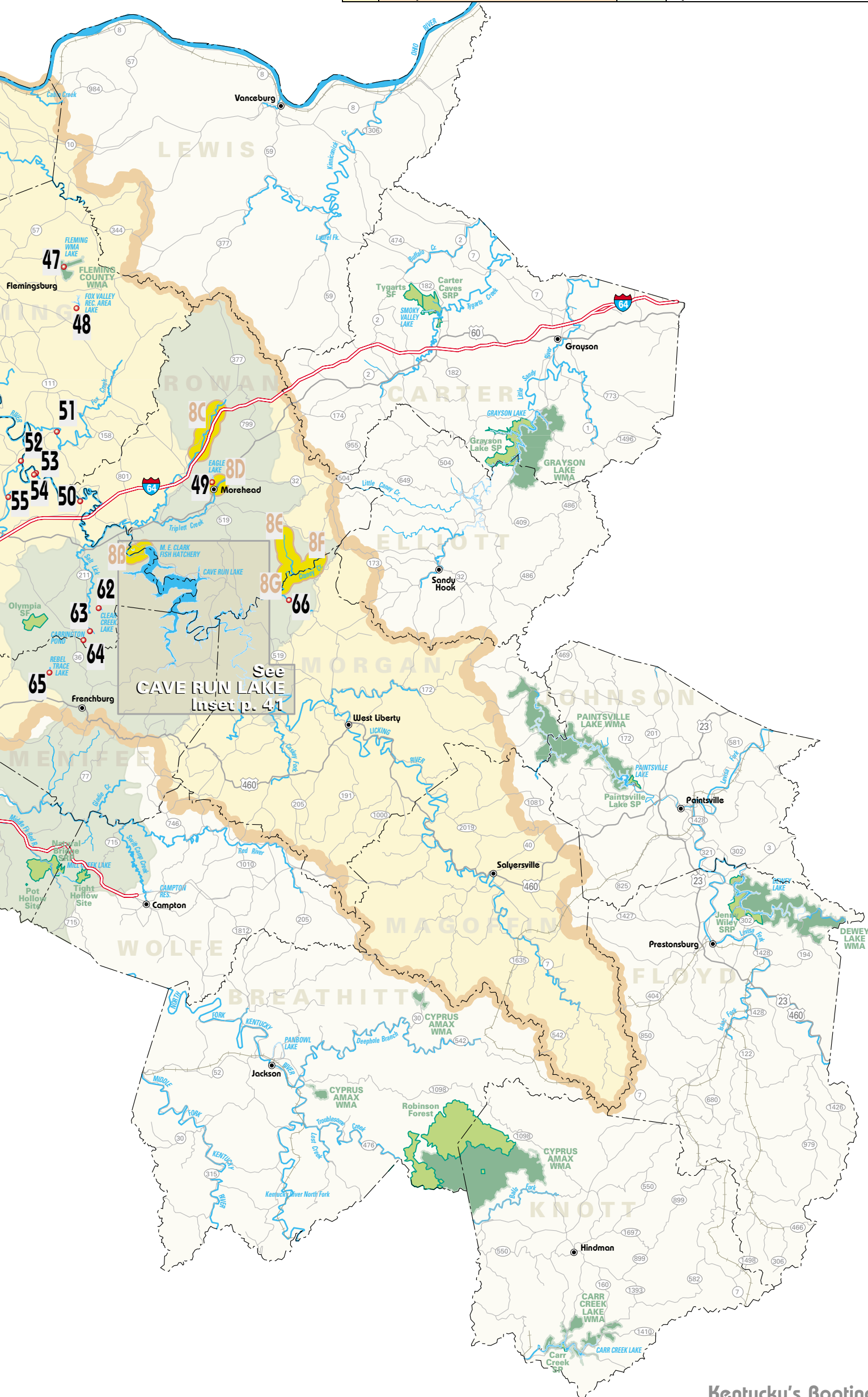
See Basin Index on p.40



Approximate Scale in Miles

Trout Stream Index

NUMBER	STREAM NAME	LENGTH	LOCATION	TROUT SPECIES
8A	Raven Creek	2 Mi.	Upstream from Hwy 1032	Rainbow
8B	Cave Run Lake Tailwater	1 Mi.	Dam to 1.2 miles downstream	Rainbow
8C	North Fork Triplett Creek	4 Mi.	Upstream from I-64	Rainbow
8D	Triplett Creek	0.4 Mi.	Dam in Morehead to 0.4 mile upstream	Rainbow
8E	Slabcamp Creek/Stonecoal Branch	2 Mi.	Mouth of Slabcamp Creek to 0.8 mile upstream in Stonecoal Branch	Brown
8F	Minor Creek	3 Mi.	Mouth of creek to 2.8 miles upstream	Brown
8G	Craney Creek	4 Mi.	Upstream from confluence with Slabcamp	Rainbow



Licking River Basin Index

See Map on p.38+39

SITE	Water Body	Area Name	Directions	Shoreline	Boat Ramp	Ramp Type	Ramp Surface	Launch Lanes	Parking	Capacity	Ramp Fee	Courtesy Dock	Handicap Pier	Picnic	Camp	Restrooms	Marina
1	Prisoner's Lake	Devou Park	KY 17 N of Independence to W I-275; N I-75; take 5th Street exit in Covington; right on Route 8; left on Western Avenue; enter Devou Park. Note: 3-acre lake; no boats allowed	●					P	< 25	Free					●	
2	Licking River	Fredricks Landing	US 27 N of Alexandria; AA Hwy W near Wilder	●	◇	A	P	M	P	50 +	\$					●	●
3	City of Southgate Pond		AA Hwy N of Alexandria; I-275 E; I-471 N; US 27 N (Exit 2) to Walnut Street. Note: 4.0-acre lake; no boats allowed	●					P	< 25	Free						●
4	Ohio River	Old Coney Is. Ferry below 275 bridge	US 27 N of Alexandria; Hwy 1998 E; Route 8 NW (1 mile) on right beneath I-275 bridge. Note: this is basically a sandbar; only accessible at low flow; need 4 WD and small boat	●	◆	B	U	S	U	< 25	Free						
5	Doe Run Lake	Doe Run Ramp	KY 17 N of Independence (2.3 miles); left on Bullock Pen Road to lake. Note: 50-acre lake	●	○	B	P	S	P	< 25	Free						
6	Licking River	Kenton Co. Park Ramp (Locust Pk Park)	KY 17 N of Independence (10 miles); right on KY 16 (1 mile); left on KY 177 to De Coursey	●		B	P	S	P	< 25	Free						
7	Licking River	Clines on the River	AA Hwy N of Alexandria; KY 9 S (1/2 mile)	●	◇	A	P	S	U	< 25	\$						
8	Ohio River	Ross Ramp	US 27 N of Alexandria; Hwy 1998 E; KY 8 S (3 miles); see signs on left	●	●	A	P	M	U	< 25	\$			●		●	○
9	Alexandria Lake	Alexandria Park	KY 10 E of Alexandria; L. on Grandview Rd; left on Alexandria Ln. Note: 5-acre lake; no boats allowed	●					U	< 25	Free						
10	Ohio River	California Ramp	AA Hwy S of Alexandria; left on Hwy 735; left on KY 8 N (1 mile on right). Note: steep ramp	●	●	B	P	S	U	< 25	Free						
11	A.J. Jolly Lake	A.J. Jolly Park	US 27 S of Alexandria; KY 824 E to park entrance. Note: 204-acre lake	●	●	B	P	S	U	< 25	Free			●		●	
12	Leary Lake	Curtis Gates Lloyd WMA	US 25 N of Williamstown; right on KY 491; lake is located in WMA. Note: 3-acre lake	○					U	< 25	Free						
13	Williamstown Lake	Ruby's Boat Dock	US 25 N of Williamstown; right on KY 467 (Knoxville Road); right on Day Road; ramp located at end of road. Note: 300-acre lake	●		A	P	S	U	< 25	\$	Yes					○
14	Williamstown Lake	Pub. Ramp, Old Williamstown Swim. Hole	Hwy 22 E of Williamstown; left on KY 489 (Fairview Road); left on Summer Drive. Note: 300-acre lake	●		B	P	S	U	< 25	Free						
15	Williamstown Lake	Williamstown Marina	KY 22 E of Williamstown; left on KY 489 (Fairview Road). Note: 300-acre lake	●		A	P	M	U	< 25	\$	Yes				◆	◇
16	Licking River	Falmouth Ramp	KY 22 in Falmouth	●		B	P	S	U	< 25	Free						
17	Kincaid Lake	SP Ramp	Hwy 22 E of Falmouth; left on KY 159; right at Kincaid Lake State Park entrance. Note: 183-acre lake	●	●	A	P	S	P	26-50	Free				◆		◇
18	Kincaid Lake	Dam Ramp	KY 22 E of Falmouth; left on KY 159; right at park entrance. Note: 183-acre lake	●	●	B	P	S	P	< 25	Free	Yes					
19	Ohio River	Foster Ramp	Hwy 1159 N of Brooksville; KY 8 W to Foster; right at railroad bridge	●	●	B	P	S	U	< 25	Free						
20	Ohio River	Capt. Anthony Meldahl Lock & Dam	Hwy 1159 N of Brooksville; KY 8 W to lock and dam. Note: shoreline fishing only	●					U	< 25	Free						
21	Ohio River	Snag Creek	Hwy 1159 N of Brooksville; KY 8 W; cross bridge over Snag Creek; gravel road on right to creek between KY 8 and railroad	●	●	C			U	< 25	Free						
22	Ohio River	Augusta Ramp	KY 19 N of Brooksville to Augusta; right on KY 8; ramp in city limits at mouth of Bracken Creek	●	◆	B	P	M	P	26-50	\$			◆			
23	Ohio River	Dover Ramp	KY 8 W of Maysville to Dover; turn on Market Street	●	●	B	P	S	U	< 25	Free						
24	Ohio River	Maysville Fishing Pier	In Maysville, E end of Wall Street and US 62/68 bridge; through flood wall	●					P	< 25	Free						
25	Ohio River	Maysville River Park Ramp	KY 10 E in Maysville off Forest Avenue; through flood wall	●	●	B	P	M	P	26-50	\$		●	●	●		
26	Mason County Landfill Lake		AA Hwy (KY 10/546) E of Maysville; right on Clarkson Sherman Road; lake on left behind manager's house. Note: 0.5-acre; permit fishing only	○					U	< 25	Free						
27	Maysville/Mason Co. Rec. Lake		US 68 SE of Maysville to Washington; left on Hwy 2515 (old US 68). Note: 12-acre lake	○					U	< 25	Free						
28	Commerce Park Lake		AA Hwy (KY 10/546) W of Maysville city limits; right on Downing Drive. Note: 0.75-acre lake; permit fishing only	○					P	< 25	Free						
29	Licking River		KY 32 W of Carlisle to US 68 (left 0.1 mile); right on Hwy 1244 (5.5 miles); right on Hwy 3314; right on Von Crayton Road; follow to river. Note: private land, but landowner allows fishing	●	●	C			U	< 25	Free						
30	Licking River	Claysville Ramp	US 62 W of Mt. Olivet to Licking River; road to left across from Hwy 19 junction; follow to ramp	●	●	B	P	S	U	< 25	Free						
31	South Fork Licking River	Robinson Dam	KY 36 NW of Cynthiana; right on Hwy 1054; right on Robinson Dam Road	●	●	B	P	S	U	< 25	Free						
32	South Fork Licking River	Cynthiana	US 27 in Cynthiana; left on River Road; follow signs to KDFWR ramp	●	●	B	P	S	U	< 25	Free			●			
33	South Fork Licking River	Terry Dam	KY 982 S of Cynthiana; turn onto Infirmary Lane; left after crossing railroad tracks	○		B	P	S	U	< 25	Free						
34	Stoner Creek	Garrard Park	N of courthouse in Paris (1 block) to Second Street (W); right at 1st stop light on Houston Street; follow to Stoner Creek	●					U	50 +	Free			◆		◆	
35	Stoner Creek	Paris Dam	US 68 NE of courthouse in Paris (3 blocks); cross bridge; dam is on right off Hwy 68. Note: Dock; walkway out to water	●					U	< 25	Free						
36	Stoner Creek	Ikkes Boat Dock	US 68/460 E from courthouse in Paris; right at 1st stoplight on Pleasant Street; 1st street on left (Stoner Avenue) to end of street	●	●	B	P	S	U	< 25	\$						
37	Stoner Creek	Fryman's Boat Dock	US 460 E of Paris to Spears Mill Road	●	●	B	U	S	U	< 25	\$						◆
38	Lake Carnico		Hwy 32 NE of Carlisle (9.1 miles); left on Hwy 1455; cross dam, turn right; first right to boat ramp. Note: 114-acre lake; idle speed only	○	○	B	P	M	U	< 25	\$	Yes					
39	4-H Club Lake	Northcentral 4-H Center	KY 32 NE of Carlisle (2.2 mi.); L. on Hwy 1455 (2.4 mi. to lake). Note: 2 and 10-acre lakes need permit	○					U	< 25	Free						
40	Carlisle Water Works Lake		KY 36 W from Carlisle (0.6 mile); near KY 13 junction. Note: 7- and 12-acre lakes	○					U	< 25	Free						
41	Licking River	Clay WMA	KY 32 NE of Carlisle (8 miles); right on Cassidy Creek Road to Clay Wildlife Management Area. Note: designed for small fishing boats	○	○	B	P	S	U	< 25	Free						
42	Area Ponds	Clay WMA	KY 32 NE of Carlisle (8 miles); right on Cassidy Cr. Rd to WMA (on L.). Note: 1/4 and 2-acre ponds	○					U	< 25	Free						
43	Licking River	Upper Blue Licks	Hwy 36 SE of Carlisle (9.1 miles); left on Hwy 57; (5.6 mi.) to dead end at river. Note: 4WD recomd.	●	●	C			U	< 25	Free						
44	Licking River	Old 57 Ford	KY 57 SW of Flemingsburg; dead ends at river. Note: limited parking	●	●	C			U	< 25	Free						
45	Flemingsburg Water Reservoir	(new reservoir)	KY 11 (bypass) in Flemingsburg on KY 11. Note: 46-acre lake; limited parking next to road	○					U	< 25	Free						
46	Flemingsburg Water Reservoir	(old reservoir)	On KY 11 (Business) in Flemingsburg at middle school. Note: 8-acre lake	○					U	< 25	Free						
47	Fleming County WMA Pond		KY 559 SE of Flemingsburg; left on Hwy 3301 (Beechburg-Wallingford Road); right on WMA Road (Colgan Road); pond on left side. Note: 2.5-acre lake	○	●	C			U	< 25	Free						
48	Fox Valley	Sand Lick (Fox Valley Lake)	KY 32 SE of Flemingsburg; left on James Road; follow signs. Note: 74-acre lake	○	○	B	P	S	U	< 25	\$			○			
49	Eagle Lake	Morehead State University	In Morehead, E on Main Street; left on University Blvd; right on Ward Oates Drive; right on Earle Clements Drive. Note: 4-acre lake; closed to public fishing at sunset	○					P	< 25	Free						
50	Licking River	Moore's Ferry	I-64 E of Owingsville; US 60 E (Exit 123); left on KY 211. Note: old ford, often silted in; limited parking (1-2 vehicles)	●	●	B	U	S	U	< 25	Free						
51	Fox Creek	Grange City Covered Bridge	KY 32 SE of Flemingsburg; R. on KY 111; L. on Flora Rd at covered bridge. Note: limited parking	●	●	C			U	< 25	Free						
52	Licking River	Wyoming Ford	KY 111 N of Owingsville; right on unnamed road (old 111) at Wyoming - Old Ford to river below mouth of Slate Creek. Note - old ford to river; often muddy and slick; limited parking (1-2 vehicles)	●	●	C			U	< 25	Free						
53	Licking River	Johnson Ford	US 60 E of Owingsville; left on Hwy 1269; left on Riddles Road; right on Adams Road; right on Johnson Ford Rd. Note: usable only during dry weather; recommend 4WD; limited parking (1-2 spots)	●	●	B	U	S	U	< 25	Free						
54	Licking River	Johnson Ford	KY 32 SE of Flemingsburg; R. on Hwy 111 to Grange City; L. on Hwy 211; R. on Crawford Bend Rd at Stringtown; left on Johnson School Rd; right on Johnson Ford Rd to river. Note: 4WD recommended	●	●	C			U	< 25	Free						
55	Slate Creek	Forge Mill	KY 111 N of Owingsville; right on Waterdell Road. Note: low water ford; accessible only during low flows; small boats	●					U	< 25	Free						
56	Slate Creek	Old Slate Furnace	KY 36 S of Owingsville (1 mile)	○					U	< 25	Free			○			
57	Slate Creek	Lions Club	KY 36 S of Owingsville; right on Kendall Springs Rd; access along roadside. Note: dam on creek here	●	●	C			U	< 25	Free						
58	Slate Creek	Little Egypt Ford	KY 36 SE of Owingsville; right on KY 965 past Preston; right on Hwy 1331; right on Snedegar Road to Ford. Note: limited parking; small boats only	●	●	C			U	< 25	Free						
59	Greenbriar Reservoir		KY 713 SE of Mt. Sterling; W on McCormick Road; right on gravel road. Note: 66-acre lake; electric motors only; small fishing boats only	○	○	B	U	S	U	< 25	\$						
60	Slate Creek	Howards Mill Dam	US 60 E of Mt. Sterling; right on Hwy 1331 to bridge over stream; very limited parking	●					U	< 25	Free						
61	Easy Walker Park Pond		US 60 E of Mt. Sterling; right on KY 686; left at first caution light. Note: 2-acre lake	○					U	< 25	Free			○			
62	Clear Creek Lake	Daniel Boone National Forest	I-64 E of Owingsville; US 60 E (Exit 123); Hwy 211 S; left on Clear Creek Road. Note: 40-acre lake; electric motors only	●	●	B	P	S	U	< 25	Free						◆
63	McDole Lake	Daniel Boone National Forest	US 60 SE of Owingsville; Hwy 211 S at Salt Lick; left on Clear Creek Road; right on Rifle Range Road. Note: 5.0-acre lake; hike-in only	●					U	< 25	Free						
64	Carrington Lake	Daniel Boone National Forest	KY 36 SE of Owingsville into Menifee County; first road left past Carrington Creek Golf Course. Note: 4.1-acre lake	●					U	< 25	Free						
65	Rebel Trace Lake	Daniel Boone National Forest	KY 36 NE of Frenchburg; W on Salt Lick Road near Sudith; lake at end of road. Note: 19.0-acre lake; electric motors only; very limited parking	●	●	C			U	< 25	Free						
66	North Fork Licking River	Daniel Boone National Forest	KY 7 N of West Liberty; KY 711 W to Leisure (0.9 mi.); L. along creek to end of rd. Note: wade fishing	●					U	< 25	Free						



Boating Accidents

Operator of any vessel involved in a boating accident must complete a Kentucky Boating Accident Report available in the Kentucky Sport Fishing and Boating Guide.

Index Legend

A	"A" Ramp - any trailerable recreational boat	
B	"B" Ramp - any LIGHT trailerable recreational boat	
C	"C" Ramp - carry-down only	
S	Single launch lane	♿ Handicap Accessible
M	Multiple launch lanes	● Year-round 24 hours
P	Paved ramp/parking lot	○ Year-round limited hours
U	Unpaved ramp/parking lot	◆ Seasonal 24 hours
<25	Number of vehicles	◇ Seasonal limited hours

Cave Run Lake Index

Site	Water Body	Area Name	Directions	Shoreline	Boat Ramp	Ramp Type	Ramp Surface	Launch Lanes	Parking	Capacity	Ramp Fee	Courtesy Dock	Handicap Pier	Picnic	Camp	Restrooms	Marina
1	Licking River	Cave Run Lake tailwater	I-64 E of Owingsville; KY 801 S (Exit 133); right on KY 826; first road to right after crossing dam	●	●	B	P	S	P	< 25	Free			●	◆	♿	
2	Cave Run Lake	Stoney Cove	I-64 E of Owingsville; KY 801 S (Exit 133); right on KY 826; cross dam and make first left. Note: shoreline fishing only	●	●				P	50 +	Free			●	◆	♿	
3	Cave Run Lake	High Bank	I-64 W of Morehead; KY 801 S (Exit 133); first road on right past Hwy 826	●	●	C			P	< 25	Free			●	◆	♿	
4	Cave Run Lake	Scotts Creek Ramp	I-64 W of Morehead; KY 801 S (Exit 133)	●	●	A	P	M	P	26-50	Free	Yes			◆	♿	○
5	Cave Run Lake	Boat Gunnel	I-64 W of Morehead; KY 801 S (Exit 133); first right past Scotts Creek Marina	○	●				P	< 25	Free		○		○		
6	Cave Run Lake	Shallow Flats	I-64 W of Morehead; KY 801 S (Exit 133); turn at goose enclosure.	●	●				P	< 25	Free		♿	◇	◆	♿	
7	Cave Run Lake	Twin Knobs Ramp	I-64 W of Morehead; KY 801 S (Exit 133); right at signs to lake. Note: ramp available only to paid campers	◆	◆	A	P	M	P	26-50	\$	Yes		◇	◆	◆	
8	Cave Run Lake	Alfrey Boat Ramp	I-64 W of Morehead; KY 801 S (Exit 133); right at Twin Knobs Campground; first blacktop on left	●	●	A	P	M	P	50 +	Free	Yes			◆	♿	
9	Cave Run Lake	Musky Bend	I-64 W of Morehead; S on KY 801 (Exit #133); follow signs	●	●				U	< 25	Free						
10	Cave Run Lake	Lake View	I-64 W of Morehead; KY 801 S (Exit 133); past Twin Knobs Campground on right	○	●				U	< 25	Free						
11	Cave Run Lake	Ramey Creek	I-64 W of Morehead; KY 801 S (Exit 133); across causeway over Ramey Creek, left on gravel, down grade to site. Note: difficult to launch at winter pool	●	●	C			U	< 25	Free						
12	Cave Run Lake	Warix Run Ramp	I-64 W of Morehead; KY 801 S (Exit 133); follow signs	●	◆	B	P	M	P	26-50	Free	Yes			◆		
13	Cave Run Lake	Zilpo	I-64 E of Owingsville; US 60E (Exit 123); KY 211 S; L on Clear Cr. Rd; L on Tater Knob Tower/Zilpo Rd	◆	◆	B	P	M	P	26-50	\$	Yes			◆	◆	♿
14	Cave Run Lake	Clay Lick Ramp	I-64 W of Morehead; KY 801 S (Exit 133); Hwy 1274 S; Hwy 3138 W. Note: camping (walk or boat in)	●	●	B	P	M	U	26-50	Free				◆	♿	
15	Cave Run Lake	Leatherwood Ramp	KY 36 NE of Frenchburg; right on Hwy 21; right on Clear Creek Road to ramp	●	●	B	P	M	U	26-50	Free					◆	
16	Cave Run Lake	Skidmore	KY 36 E of Frenchburg; Hwy 1274 E; left on Skidmore Creek Road; follow to lake	●	●	C			U	< 25	Free						
17	Cave Run Lake	Longbow Ramp	KY 36 NE of Frenchburg; Hwy 1274 E; ramp on right	●	●	B	P	M	U	26-50	Free		●		◆	♿	○
18	Cave Run Lake	Beaver Creek Ramp	KY 36 E of Frenchburg; Hwy 1274 E; ramp on right side between Scranton and Longbow Marina. Note: cannot launch at winter pool	●	◆	B	P	S	P	< 25	Free						
19	Cave Run Lake	Bangor Boat Ramp	I-64 W of Morehead; KY 801 S (Exit 133); Hwy 1274 SE; left on New Hope Road at Bangor	●	●	B	P	S	U	26-50	Free					◆	
20	Cave Run Lake	Poppin Rock Boat Ramp	KY 519 S of Morehead near Morgan County line	●	●	B	P	M	U	50 +	Free					◆	
21	Cave Run Lake	North Fork	KY 519 S of Morehead; left on Paragon-Craney Road; public fishing access along road	●	●				U	< 25	Free						
22	Cave Run Lake	Blackwater Ramp	KY 7 N of West Liberty; left on Hwy 519; left on KY 976. Note: small fishing boats only, difficult to launch during winter pool	●	●	B	P	S	U	< 25	Free						
23	Cave Run Lake	Ramp 26	KY 7 N of West Liberty; left on Hwy 519; left on Hwy 772; right after crossing bridge over lake. Note: may be difficult to launch	●	●	B	P	M	U	< 25	Free						

