

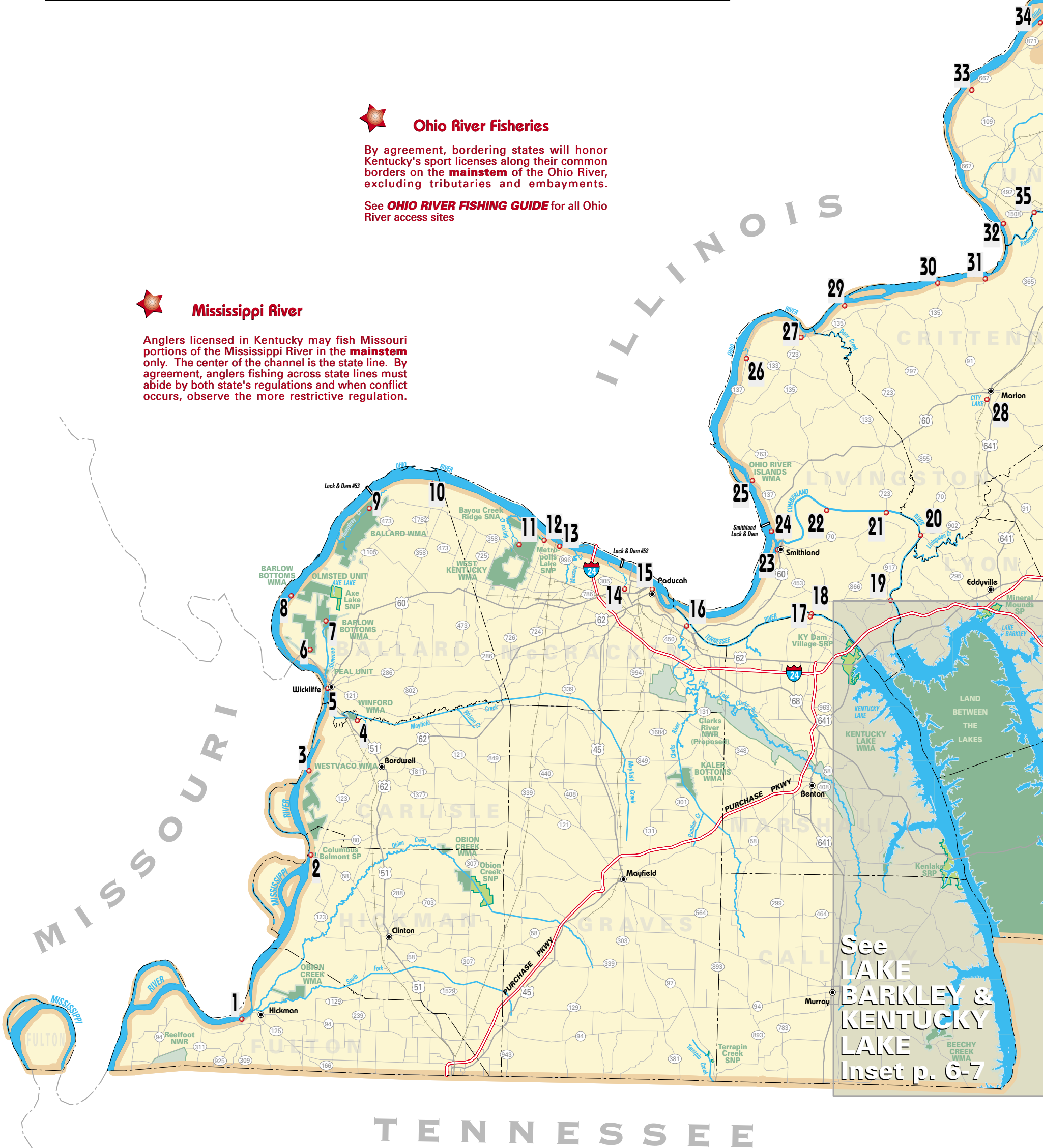
Ohio River Fisheries

By agreement, bordering states will honor Kentucky's sport licenses along their common borders on the **mainstem** of the Ohio River, excluding tributaries and embayments.

See **OHIO RIVER FISHING GUIDE** for all Ohio River access sites

Mississippi River

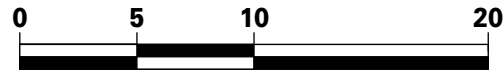
Anglers licensed in Kentucky may fish Missouri portions of the Mississippi River in the **mainstem** only. The center of the channel is the state line. By agreement, anglers fishing across state lines must abide by both state's regulations and when conflict occurs, observe the more restrictive regulation.



INDIANA

TENNESSEE, LOWER CUMBERLAND, TRADEWATER, & MISSISSIPPI RIVER BASIN

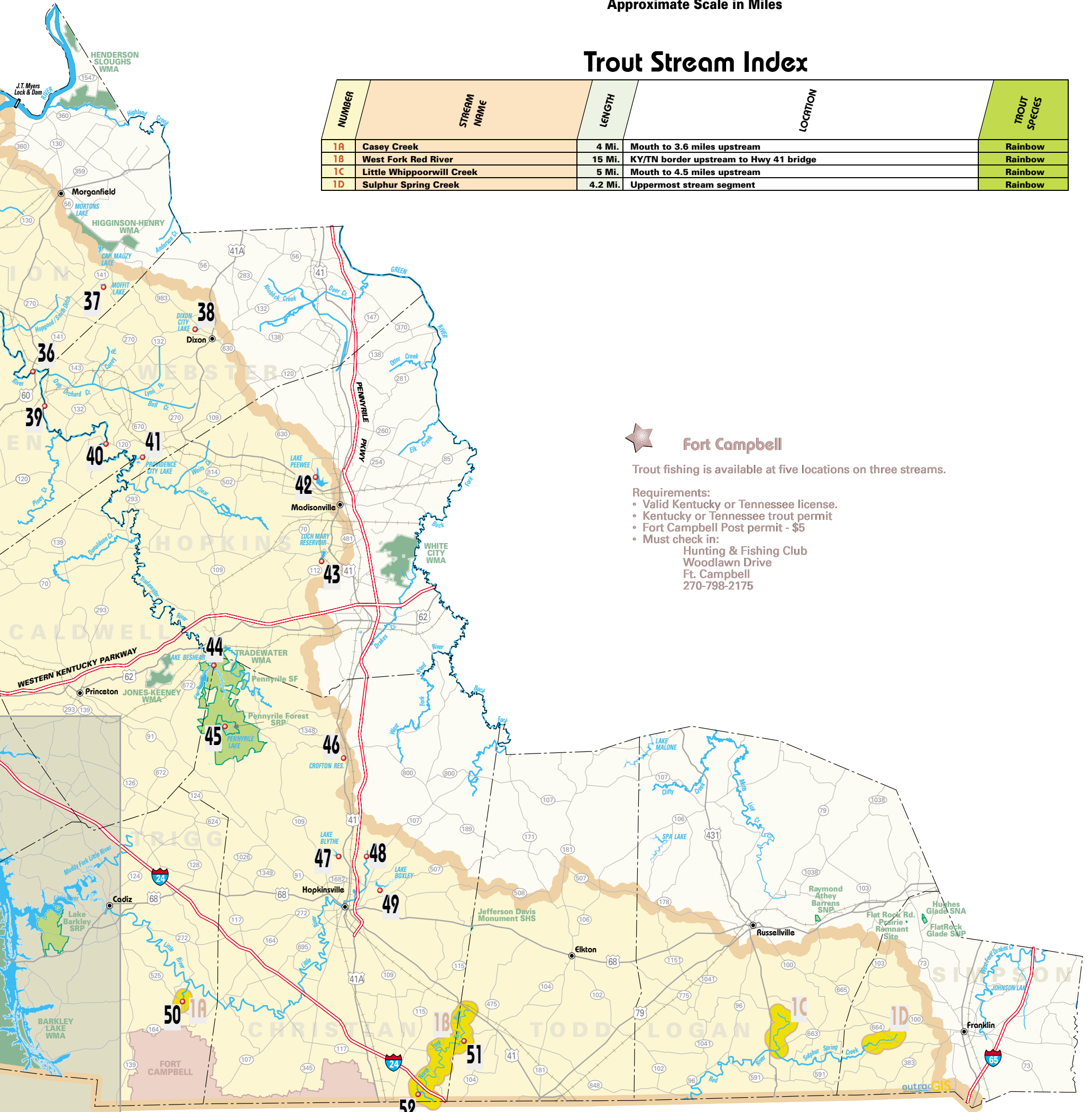
See Basin Index on p.4



Approximate Scale in Miles

Trout Stream Index

NUMBER	STREAM NAME	LENGTH	LOCATION	TROUT SPECIES
1A	Casey Creek	4 Mi.	Mouth to 3.6 miles upstream	Rainbow
1B	West Fork Red River	15 Mi.	KY/TN border upstream to Hwy 41 bridge	Rainbow
1C	Little Whippoorwill Creek	5 Mi.	Mouth to 4.5 miles upstream	Rainbow
1D	Sulphur Spring Creek	4.2 Mi.	Uppermost stream segment	Rainbow



Fort Campbell

Trout fishing is available at five locations on three streams.

Requirements:

- Valid Kentucky or Tennessee license.
- Kentucky or Tennessee trout permit
- Fort Campbell Post permit - \$5
- Must check in:

Hunting & Fishing Club
Woodlawn Drive
Ft. Campbell
270-798-2175

TENNESSEE

Tennessee, Lower Cumberland, Tradewater & Mississippi River Basin

See Map on p.2+3

Site	Water Body	Area Name	Directions	Shoreline	Boat Ramp	Ramp Type	Ramp Surface	Launch Lanes	Parking	Capacity	Ramp Fee	Courtesy Dock	Handicap Pier	Pknic	Camp	Restrooms	Marina
1	Mississippi River	Hickman Harbor	KY 94 in Hickman through floodwall	●	●	B	P	M	U	< 25	Free						
2	Mississippi River	Columbus - Belmont SP	KY 58 W of Clinton through Columbus; follow KY 58 to river; ramp on last road on right. Note: restrooms/picnic area available at nearby state park	●	●	A	P	S	U	< 25	Free			●		●	
3	Mississippi River	Laketon Road Ramp	KY 123 SW of Bardwell; right on Hwy 1203; left on Laketon Road to river. Note: boat ramp not usable at low water	●	◆	B	P	S	U	< 25	Free						
4	Winford Ponds	Winford WMA	US 51 N of Bardwell; follow signs	◇	◇	B	U	S	U	< 25	Free						
5	Mississippi River	Wickliffe Water Front	In Wickliffe at end of KY 121. Note: boat ramp not usable at low water	●	●	A	P	S	U	< 25	Free						
6	Swan Lake-SLWMA	Barlow Bottoms WMA	US 60/62 W of Wickliffe to Swan WMA; follow signs. Note: several small lakes; some electric motor only	◆	◆	B	P	S	U	< 25	Free				◆		
7	Peal Ponds	Barlow Bottoms WMA	US 60 NE of Wickliffe to Holloway Landing-Sodom Road; follow signs. Note: electric motor only on some lakes	◇	◇	B	U	S	U	< 25	Free						
8	Ohio River	Holloway Landing	US 60 NE of Wickliffe to Barlow; left on Holloway Landing -Sodom Road (to end of road)	●	●	B	P	S	U	< 25	Free						
9	Ballard County WMA	Area Lakes	US 60 NE of Wickliffe to LaCenter; left on KY 358 NE; left on Hwy 1105; right on KY 473; left into area. Note: electric motor only	◇	◇	B	U	S	U	< 25	Free				◆	◇	
10	Ohio River	Odgen Landing	US 60 NE of Wickliffe to LaCenter; left on KY 358; left on Hwy 1782; right on to Odgen Landing road. Note: access to Lock and Dam 53 tailwater; low flow during late summer may prohibit boat launching	●	●	B	P	S	U	< 25	Free					●	
11	West KY WMA		KY 305 W of Paducah; right on Ky 358; see signs. Note: several ponds <7 acre water bodies; some with gravel ramps for jon boat access; electric motor only; other lakes are carry down; one lake has handicapped access.	●	●	B	U	S	U	< 25	Free	●	○	●	○		
12	Metropolis Lake		US 60 W of Paducah to Future City; right on KY 996; follow to Metropolis Lake Road. Note: electric motor only	●	●	B	U	S	U	< 25	Free						
13	Ohio River	Metropolis Ferry	KY 305 W of Paducah to Cecil; right on Hwy 1420; left just before railroad bridge on River Road. Note: access to Lock & Dam 52 tailwater	●	●	B	P	S	U	< 25	Free						
14	Bob Noble Pk. Lake		In city limits of Paducah near junction of US 60 and 45	○					U	50 +	Free	○	○			○	
15	Ohio River	Broadway Street Ramp	End of Broadway Street in Paducah	●	●	A	P	M	P	26-50	Free			●		●	
16	Clarks River	Clarks River Boat Ramp	US 60/62 E of Paducah; ramp is under bridge; access road is on downstream side of road	●	●	B	P	S	P	< 25	Free						
17	Tennessee River	Old Ferry Landing	US 641 N of Benton; left on US 68; right on KY 95 to end of road	●	●	B	U	S	U	< 25	Free						
18	Tennessee River	Haddock Ferry	KY 453 S of Smithland to Haddock Road (5 miles)	●	●	A	P	S	U	< 25	Free						
19	Cumberland River	Iuka	KY 453 S of Smithland; left on KY 93 to Iuka; left on KY 917	●	●	B	P	S	U	< 25	Free						
20	Cumberland River	Dycusburg Ramp	US 641 S of Marion; right on US 70 to Dycusburg. Note:Livingston Co. side needs repair, Crittenden Co. side is operational	●	●	B	P	S	U	< 25	Free						
21	Cumberland River	Pinckneville Ramp	US 60 NE of Smithland to Salem; left on KY 723; ramp at end of road	●	●	B	P	S	U	< 25	Free			●			
22	Cumberland River	Vicksburg Ramp	KY 70 E of Smithland; left on Livingston Church-Vicksburg Road to river	●	●	B	P	S	U	< 25	Free						
23	Ohio River	Smithland Ramp	In Smithland, off US 60 at river	●	●	B	U	S	U	< 25	Free					●	
24	Ohio River	Dyer Creek Ramp	US 60 NE of Smithland to Smithland Lock & Dam; follow signs	●	●	B	P	M	P	26-50	Free						
25	Ohio River	Birdsville Ramp	US 60 N of Smithland; left on KY 137	●	●	A	P	S	P	26-50	Free			●			
26	Ohio River	Givens Creek Ramp	US 60 NE of Smithland; left on KY 137 (20 miles); see signs near jct. of KY 133	●	●	B	P	S	P	< 25	Free						
27	Ohio River	Carrsville	US 60 NE of Smithland; KY 135 to Carrsville	●	●	B	P	S	U	< 25	Free						
28	Lake George - Marion City Lake		US 641 in Marion; right on KY 688; left on gravel road to lake. Note: electric motors only; 65-acre lake	○	○	B	P	S	U	< 25	Free			◇			
29	Ohio River	Elizabethtown Ferry	US 60 W of Marion; right on KY 297	●	●	A	P	S	U	< 25	Free						
30	Ohio River	Cave-In-Rock Ferry	KY 91 N of Marion to Ohio River	●	●	B	P	S	U	< 25	Free						
31	Ohio River	Old Lock & Dam #50	KY 91 N of Marion; right on Hwy 387 to end of road	●	●	A	P	M	P	26-50	Free						
32	Ohio River	Caseyville	US 60 SW of Morganfield to Sturgis; right on KY 109; left on Hwy 1508 to Caseyville Ramp	●	●	B	P	M	P	50 +	Free						
33	Ohio River	Blackburn	KY 56 W of Morganfield; right on Hwy 667 (River Road) to boat ramp	●	●	B	P	M	P	26-50	Free						
34	Ohio River	Uniontown Dyke	KY 130 N of Morganfield; left on KY 360; right on KY 871; right on Dyke Rd (Hwy 1671). Note: this is a private ramp, but the owners allow public use; access to Uniontown Lock & Dam tailwater	●	●	B	U	S	U	< 25	Free						
35	Tradewater River	Grangertown Landing	US 60 SW to Sturgis; right on KY 109; left on Hwy 1508; (0.5 mile) on left	●	●	B	P	S	U	< 25	Free						
36	Tradewater River	VFW Bridge	US 60 SW of Morganfield through Sturgis and Sullivan; left at county line	●	●	B	P	M	U	< 25	Free						
37	Moffitt Lake	Boxville	KY 56 E to Boxville; right on KY 141; left on Hwy 2153 to Moffitt Lake. Note: 49-acre lake; fee	◆	◆	B	P	S	P	26-50	\$			◆	◆	◆	◆
38	Dixon City Lake		US 41A N of Dixon (3/4 mile); left on KY 983 (1 mile); lake on left. Note: 15-acre lake	●	●	B	U	S	U	< 25	Free			○			
39	Tradewater River	Blackford Ramp	KY 132 W of Dixon to Clay; right on KY 109 past Wheatcroft; right on KY 143 to Blackford	●	●	B	P	M	U	< 25	Free						
40	Tradewater River	Montezuma Bridge - Hwy 120	US 41A S of Dixon to Providence; KY 120 W to Tradewater River. Note: Must use highway right-of-way for parking	●	●	C	U		U	< 25	Free						
41	Providence New City Lake		US 41A S of Dixon to Providence; KY 293 S (2 miles); gravel road on right. Note: 50-acre lake; electric motors only	●	●	B	U	S	U	< 25	Free						
42	Lake Pee Wee		US 41A NE of Madisonville; right on Tucker School House Road. Note: 360-acre lake; gates close at dark; no gasoline motors	○	○	B	P	S	P	< 25	Free						
43	Loch Mary Reservoir	Earlington Lake	US 41A S of Madisonville to Earlington; right on KY 112. Note: 135-acre lake	●	●	B	P	S	U	< 25	Free			●	●		
44	Lake Beshear	Redden's Boat Ramp	US 62 E of Princeton; right on KY 672 to lake. Note: 760-acre lake	●	●	B	P	S	P	< 25	\$	Yes					
45	Pennyrile Lake	Pennyrile Forest SP	KY 109 N of Hopkinsville; left on KY 398; follow signs to state park entrance. Note: 47-acre lake; no public boat access - must rent boats (electric motors) from state park	●	●				P	50 +	Free	Yes		◆	◆	●	
46	Crofton Reservoir		US 41 N of Hopkinsville to Crofton; left on Dripping Spring Road (1/2 mi). Note: 22.6-acre lake; electric motors only	●	●	B	U	S	U	< 25	Free						
47	Lake Blythe		US 41 N of Hopkinsville; left on Mt. Zoar-Latham Road. Note: 89.2-acre lake	●	●	B	U	S	U	< 25	Free						
48	Lake Morris		US 41 N of Hopkinsville; right on old Madisonville Road; right onto Hwy 2642. Note: 170-acre lake; electric motors only	●	●	B	U	S	U	< 25	Free			●		●	
49	Lake Boxley		KY 107 N of Hopkinsville; right on Hwy 507; second side road to left. Note: 166-acre lake; electric motors only	●	●	C			U	< 25	Free						
50	Casey Creek		KY 1395 W of Cadiz; left on KY 525; follow signs	●	●				U	< 25	Free						
51	West Fk. Red River	Fredricks Access	KY 181 S of Elton; right on KY 104 to Trenton; right on US 41; left on Bakers Mill Road; right on Fredericks Road; follow trout signs	●	◇	C			U	< 25	Free						
52	West Fk. Red River	Hunters	US 41 S of Hopkinsville; left on Hwy 911; left on Carter Rd; access at bridge. Note: trout stocking site	●	●				U	< 25	Free						

Dams

There are several types of dams in Kentucky:

- Navigation lock and dam system generally on the Ohio, Kentucky, and Green rivers.
- Impoundment dams that form most of our lakes.
- Low-head dams that only raise the water 1-6 feet but are located on small streams throughout Kentucky.

DANGERS!

- All dams have dangerous currents above and below the dam.
- Powerful "back" (reverse) currents exist below all dams and can be deadly if you are trapped in the "boils" below the dam.
- Larger dams have restricted zones posted which are generally 150 feet downstream from the dam and 150 feet laterally from the lock wall (if present).
- You must wear a PFD in the Restricted Zone.

Index Legend

A	"A" Ramp - any trailerable recreational boat	♿	Handicap Accessible
B	"B" Ramp - any LIGHT trailerable recreational boat	●	Year-round 24 hours
C	"C" Ramp - carry-down only	○	Year-round limited hours
S	Single launch lane	◆	Seasonal 24 hours
M	Multiple launch lanes	◇	Seasonal limited hours
P	Paved ramp/parking lot		
U	Unpaved ramp/parking lot		
<25	Number of vehicles		



Bank fishing, Ohio River tailwaters

© Soc Clay, Inc.

Kentucky Lake Index

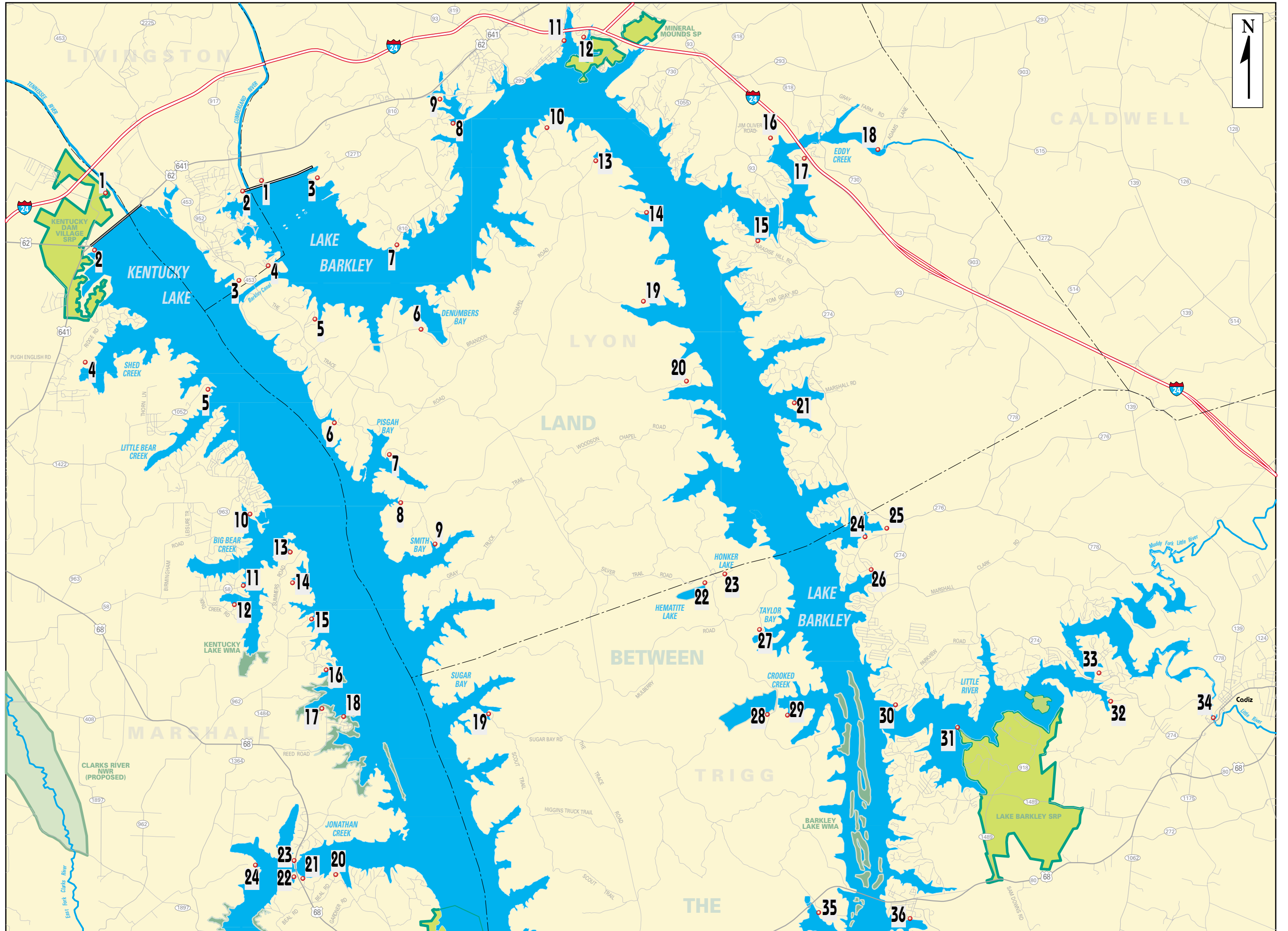
See Map on p.6+7

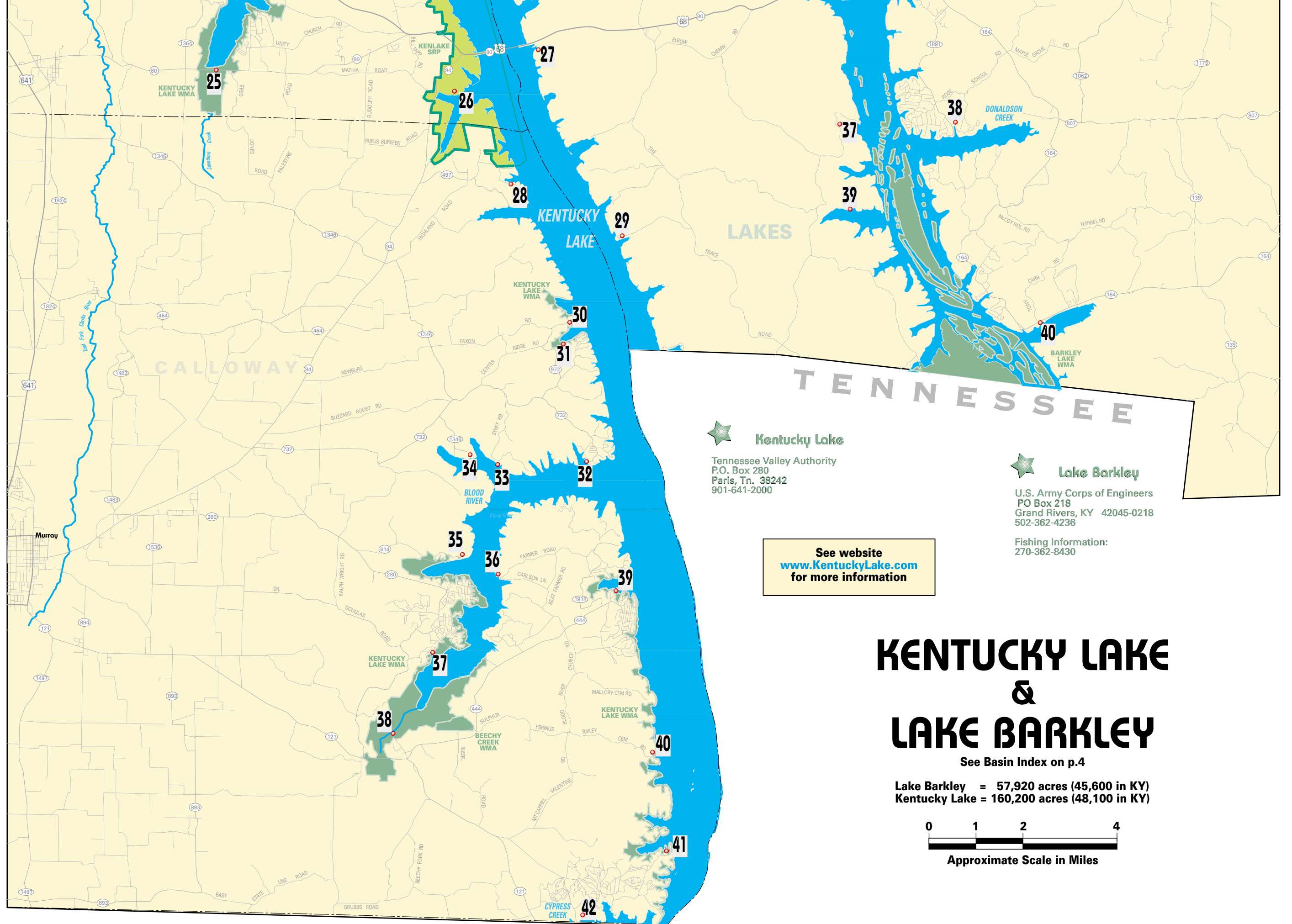
Site	Water Body	Area Name	Directions	Shoreline	Boat Ramp	Ramp Type	Ramp Surface	Launch Lanes	Parking	Capacity	Ramp Fee	Courtesy Dock	Handicap Pier	Picnic	Camp	Restrooms	Marina
1	Kentucky Lake tailwater	Gilbertsville Ramp	US 641 N of Benton to KY 282; follow ramp signs	●	●	B	P	M	U	26-50	Free			◆	◆	◆	
2	Kentucky Lake	KY Dam Marina and State Park	US 641 N of Benton to state park entrance	●	●	A	P	M	P	50 +	Free	Yes		●	◆	●	○
3	Kentucky Lake	Lighthouse Marina	KY 453 S of Smithland on right prior to crossing canal	●	●	A	P	S	P	< 25	Free			●	●	●	○
4	Kentucky Lake	Slodd Creek - TVA	US 641 N of Benton; right on Ridge Road (3 miles) N of Draffenville	◇	◇	C			U	< 25	Free				◆		
5	Kentucky Lake	Little Bear Public Use Area	US 641 N of Benton; right on Hwy 1422; left on Hwy 1052 to end of road	●	●	B	P	S	U	< 25	Free	Yes		●	◆	●	
6	Kentucky Lake	Hillman's Ferry - LBL	US 62/641 W of Eddyville to KY 453 S (Trace Road); right on TVA Road #110	◆	◆	B	P	S	P	< 25	\$			◆	◆	◆	
7	Kentucky Lake	Pisqah Bay Campground L. access - LBL	US 62/641 W of Eddyville to KY 453 S (Trace Road); right on TVA Road #111	●	●	B	P	M	U	< 25	Free			●	●	●	Ⓜ
8	Kentucky Lake	Pisqah Bay Boat Ramp - LBL	US 62/641 W of Eddyville; KY 453 S (Trace Road); right on TVA Road #114	●	●	B	P	S	U	< 25	Free			●	●		
9	Kentucky Lake	Smith Bay - LBL	US 62/641 W of Eddyville to KY 453 S (Trace Road); right on TVA Road #114; right on TVA Road #116	●	●	B	P	S	U	< 25	Free			●	●		
10	Kentucky Lake	Moor's Resort	KY 408 E of Benton; left on US 68; right on KY 963 to Moor's Resort	●	●	A	P	M	P	26-50	\$	Yes		●	◆	●	○
11	Kentucky Lake	Big Bear Public Use Area	KY 408 E of Benton; left on US 68; right on KY 58 to end of road	●	●	A	P	M	P	26-50	Free	Yes		●	◆	●	◇
12	Kentucky Lake	King Creek Resort	KY 408 E of Benton; left on US 68; right on KY 58; right on King Creek Road	◆	◇	B	P	S	U	< 25	\$	Yes				◇	◇
13	Kentucky Lake	Barge Is. Public Use Area, Birmingham Pt.	KY 408 E of Benton; right on US 68; left on KY 962 to end of road	●	●	A	P	M	P	26-50	Free	Yes		◆	◆	◇	
14	Kentucky Lake	Bee Spring Lodge	KY 408 E of Benton; right on US 68; left on KY 962 to resort entrance (on right)	◆	◆	B	P	S	U	< 25	\$	Yes				◆	◇
15	Kentucky Lake	Southern Comfort Resort	KY 408 E of Benton; right on US 68; left on KY 962 to resort entrance (on right)	◆	◆	B	P	S	U	< 25	\$	Yes				◆	◇
16	Kentucky Lake	Shawnee Bay Resort	KY 408 E of Benton; right on US 68; left on Hwy 1484; right on Shawnee Bay Road	◇	◇	B	P	S	U	< 25	\$	Yes				◇	◇
17	Kentucky Lake	Hickory Hill	KY 408 E of Benton; right on US 68; left on Reed Road (2 miles from Fair Dealing)	◇	◇	B	P	S	U	< 25	\$	Yes				◆	◆
18	Kentucky Lake	Cozy Cove	KY 408 E of Benton; right on US 68; left on Reed Road (2 miles from Fair Dealing)	◆	◆	B	P	S	U	< 25	\$	Yes				◆	◇
19	Kentucky Lake	Sugar Bay - LBL	US 68/80 W of Cadiz; N on KY 453 (Trace Road); left on TVA Road #140 to site	●	●	B	P	S	U	< 25	Free			●	●		
20	Kentucky Lake	Town & Country	KY 408 E of Benton; right on US 68; left on Beal Road after crossing Jonathan Creek bridge	●	●	A	P	S	U	< 25	\$	Yes		◇	◆	◆	
21	Kentucky Lake	Harry Lee Waterfield Park	KY 408 E of Benton; right on US 68; ramp on left after crossing Jonathan Creek Bridge	●	◆	B	P	M	P	< 25	Free			◆	◆	◆	
22	Kentucky Lake	Sportsman Resort	KY 408 E of Benton; right on US 68; ramp on right just past Jonathan Creek Bridge	◆	◆	A	P	S	U	< 25	\$	Yes				◆	◇
23	Kentucky Lake	Jonathan Creek/US 68	KY 408 E of Benton; right on US 68; right to ramp just before Jonathan Creek Bridge	●	●	A	P	M	P	26-50	Free	Yes				●	
24	Kentucky Lake	Cedar Knob	KY 408 E of Benton; right on US 68; right on Hwy 1364; left on Curd Road	◆	◆	B	P	S	P	< 25	\$	Yes			◆	◆	
25	Kentucky Lake	Jonathan Creek - KY 80 Ramp	US 641 S of Benton; right on KY 80 E; boat ramp on R. side of road after crossing Jonathan Cr. bridge	●	◆	B	P	M	P	< 25	Free			◆	◆	◆	
26	Kentucky Lake	KenLake State Park	KY 408 E of Benton; right on US 68 to Aurora; right on KY 94 to state park entrance	●	●	A	P	M	P	26-50	Free	Yes		◆	◆	◆	◇
27	Kentucky Lake	Fenton Lake Access	US 68/80 W of Cadiz; left just before crossing Kentucky Lake bridge	●	●	B	P	M	U	26-50	Free	Yes		●	●	●	
28	Kentucky Lake	White Beach Ramp	KY 94 E of Murray; right on KY 497 (1 mile) to gravel road (see signs)	●	●	B	P	S	P	< 25	Free			●	◆		
29	Kentucky Lake	Redd Hollow (LBL)	US 68/80 W of Cadiz; S on KY 453 (Trace Road); right on TVA Road #171	●	●	B	P	S	U	< 25	Free			●	●		
30	Kentucky Lake	Newburg Landing	KY 94 E of Murray; right on Newburgh-Faxon Road (Hwy 972) to end	◆	◆	B	U	S	U	< 25	Free						
31	Kentucky Lake	Paradise Resort	Hwy 94 E of Murray; right on Newburgh-Faxon Road (Hwy 972); resort is on left	◇	◇	B	P	S	P	< 25	\$	Yes		◇	◆	◇	◇
32	Kentucky Lake	Lynnhurst	Hwy 94 E of Murray; right on Hwy 732 to end of road	●	●	B	P	S	U	< 25	\$	Yes		◆	◆	◆	◇
33	Kentucky Lake	Boatwright Ramp	KY 94 E of Murray; right on KY 732; right on Swift Road to end	●	◆	B	U	S	U	< 25	Free						
34	Kentucky Lake	Irvin Cobb	KY 94 E of Murray; right on Ky 732; right on Hwy 1346 to end of road	●	●	B	P	M	P	26-50	\$	Yes		●	◆	●	○
35	Kentucky Lake	Wildcat Public Access	KY 94 E of Murray; right on KY 280; left on KY 614 to end of road	○	○	A	P	M	P	26-50	Free	Yes		◇	◆	◆	
36	Kentucky Lake	Brandon's Mill	KY 121 S of Murray; left on KY 444 (five miles) to Blood River Baptist Church; left on Beat Farmer Road (2 miles); left on Carson Road to end	●	●	B	U	S	U	< 25	Free						
37	Kentucky Lake	Slavehouse Boat Ramp - TVA	KY 94 E of Murray; right on Ky 280 (8 miles) to gravel road on left; follow signs	●	◆	B	U	S	U	< 25	Free						
38	Kentucky Lake	Parker's Field WMA	KY 121 S of Murray; left on KY 280; right on Cherry Corner - New Concord Road	●	◆	B	U	S	U	< 25	Free						
39	Kentucky Lake	Boyd's Branch	KY 121 S of Murray; left on KY 444 (7 miles); follow signs	●	●	B	P	S	U	< 25	Free						
40	Kentucky Lake	Steele Boat Ramp	KY 121 S of Murray; left on KY 444 (2 miles); left on Buffalo-Sulphur Road to Bailey Cem. Rd. to end	◆	◆	B	U	S	U	< 25	Free						
41	Kentucky Lake	Patterson's Point	KY 121 S of Murray; left on Cypress Cove Road	●	●	B	P	S	U	< 25	Free						
42	Kentucky Lake	Cypress Creek	KY 121 S of Murray to Klein Road; to end of road	●	●	A	P	S	U	< 25	\$	Yes				◆	◇

Lake Barkley Index

See Map on p.6+7

Site	Water Body	Area Name	Directions	Shoreline	Boat Ramp	Ramp Type	Ramp Surface	Launch Lanes	Parking	Capacity	Ramp Fee	Courtesy Dock	Handicap Pier	Picnic	Camp	Restrooms	Marina
1	Cumberland River	Tailwater	US 62/641 W of Eddyville; left at Barkley Dam	●	●	B	P	M	P	26-50	Free				◆		
2	Barkley Lake	Double Creek	KY 453 S of Smithland; US 62/641 E; right on KY 917	●	●	A	P	S	P	< 25	Free	Yes					
3	Barkley Lake	Eureka Ramp	US 62/641 W of Eddyville; left on KY 810; right on Hwy 1271 (to ramp)	◆	○	A	P	S	P	26-50	Free			◆	◆	◆	
4	Barkley Lake	Canal Campground Ramp	KY 453 S of Smithland; left at sign for Canal Campground prior to crossing canal	◆	◆	A	P	S	P	26-50	\$	Yes		◆	◆	◆	
5	Barkley Lake	Nickell Branch - LBL	US 62/641 W of Eddyville; KY 453 S (Trace Road); left on TVA Road #102 to ramp	●	●	B	P	S	U	< 25	Free			●	●	●	
6	Barkley Lake	Demumbers Bay - LBL	US 62/641 W of Eddyville; KY 453 S (Trace Road); left on TVA Road #108	●	●	B	P	S	U	< 25	Free	Yes			●	●	
7	Barkley Lake	Boyd's Landing Public Access	US 62/641 W of Eddyville; left on KY 810 to end of road	◆	◆	B	P	S	P	26-50	Free			◆	◆	◆	
8	Barkley Lake	Buzzard Rock	US 62/641 W of Eddyville; left on KY 810; left at Buzzard Rock sign	●	●	A	P	S	P	< 25	Free	Yes					
9	Barkley Lake	Poplar Creek	US 62/641 W of Eddyville; at Swanee, turn left at boat ramp sign	●	●	B	P	S	P	< 25	Free	Yes					
10	Barkley Lake	Kuttawa Landing Ramp - LBL	US 62/641 W of Eddyville left on KY 453 S (Trace Road); left on TVA Road #117; left on TVA Road #126 to TVA Road #127. Note: camping - tents only	●	●	B	P	S	U	< 25	Free				●		
11	Barkley Lake	Kuttawa Harbor Ramp	US 62/641 W of Eddyville; left on KY 295 to lake	●	●	A	P	M	P	26-50	Free	Yes		◆	◆	◆	◇
12	Barkley Lake	Mineral Mound State Park	KY 93 S of Eddyville; right at Mineral Mound State Park Ramp sign	○	○	A	P	M	P	50 +	Free	Yes					
13	Barkley Lake	Eddyville Ferry Landing - LBL	US 62/641 W of Eddyville; left on KY 453 S (Trace Road); left on TVA Road #117	●	●	B	P	S	P	< 25	Free						
14	Barkley Lake	Barnett Bay - LBL	US 62/641 W of Eddyville L. on KY 453 S (Trace Road); L. on Eddyville Ferry Rd; R. at Barnett Cem Rd.	●	●	B	U	S	U	< 25	Free				●		
15	Barkley Lake	Eddy Creek Public Access	KY 93 S of Eddyville (7 miles); follow signs	●	●	A	P	S	P	26-50	Free	Yes		◆	◆	◆	◇
16	Barkley Lake	Holiday Hills	KY 93 S of Eddyville (6 miles) to Holiday Hills Road	◆	●	B	P	S	U	< 25	\$	Yes		◆	◆	◆	◇
17	Barkley Lake	Eddy Creek - Coleman Bridge	KY 93 S of Eddyville; left on Hwy 293; right on Hwy 730	●	●	B	P	S	P	< 25	Free						
18	Barkley Lake	Eddy Creek Ramp	KY 93 S of Eddyville; left on Hwy 293; right on KY 818 to Eddy Creek Road	●	●	B	P	S	U	< 25	Free						
19	Barkley Lake	Mammoth Furnace Ramp - LBL	US 62/641 W of Eddyville L. on KY 453 S (Trace Rd.); L. on Eddyville Ferry Rd to Mammoth Furnace Rd.	◆	◆	B	U	S	U	< 25	Free				◆		
20	Barkley Lake	Craven's Bay - LBL	US 62/641 W of Eddyville; L. on KY 453 S (Trace Road); left on TVA Road #117; R. on TVA Road #118	◆	◆	B	P	S	P	< 25	Free	Yes		◆	◆	◆	
21	Barkley Lake	Dryden Creek	KY 93 S of Eddyville; right on KY 274; follow signs	●	●	B	P	S	P	26-50	Free	Yes					
22	Hematite Lake	LBL	US 68/80 W of Cadiz; right on KY 453 (Trace Road); right on TVA Road #133 (Silver Trail); right on TVA Road #134. Note: 94.6-acre lake; electric motor only	●	●	B	U	S	U	< 25	Free			●			
23	Honker Lake	LBL	US 68/80 W of Cadiz; R. on KY 453 (Trace Rd); R. on TVA Rd #133 (Silver Trail). Note: elec. motor only	◆	◆	B	U	S	U	< 25	Free			●			
24	Barkley Lake	Prizer Point	KY 778 NW of Cadiz; left on KY 276; right on KY 274	●	●	A	P	S	P	26-50	\$	Yes		◆	◆	◆	◆
25	Barkley Lake	Hurricane Creek	KY 778 NW of Cadiz; left on KY 276	◆	◆	B	P	S	P	< 25	Free	Yes		◆	◆	◆	
26	Barkley Lake	Rockcastle Ramp	KY 778 NW of Cadiz; left on KY 276; left on KY 274	●	●	B	P	S	P	26-50	Free	Yes		●			
27	Barkley Lake	Taylor Bay - LBL	US 60/80 W of Cadiz; right on KY 453 (Trace Road); right on TVA Road #135 (Mulberry Flat Road); right on TVA Road #136	●	●	B	P	S	U	< 25	Free			●	●	●	
28	Energy Lake	LBL - Energy Lake Ramp	US 68/80 W of Cadiz; right on TVA Road #153; right on TVA Road #134	●	●	B	P	S	U	< 25	Free					●	
29	Barkley Lake	Crooked Creek - LBL	US 68/80 W of Cadiz; right on TVA Road #153; right on TVA Road #134	●	●	B	P	S	U	< 25	Free	Yes				●	
30	Barkley Lake	Little River Ramp	US 60/80 W of Cadiz; right on KY 274; left on Peal Chapel Road; follow to end	●	●	B	P	S	P	< 25	Free						
31	Barkley Lake	Lake Barkley State Park	US 68/80 W of Cadiz to park entrance	●	●	A	P	M	P	26-50	Free	Yes		●	●	●	○
32	Barkley Lake	Boat Haven	US 68/80 W of Cadiz; right on KY 274; follow signs	●	●	B	P	S	P	< 25	\$	Yes				◆	◇
33	Barkley Lake	Meschan Bridge Ramp	US 68/80 W of Cadiz; right on KY 274 just past bridge	●	●	B	P	S	P	26-50	Free	Yes		◆	◆		
34	Little River	Cadiz Roadside Park	In Cadiz on US 60/80 just outside of city limits	●	●	B	P	S	P	< 25	Free			●		●	
35	Barkley Lake	Devil's Elbow - LBL	US 68/80 W of Cadiz; first road to left after crossing Barkley Lake bridge	●	●	B	P	M	U	< 25	Free	Yes		●	●	●	
36	Barkley Lake	Devil's Elbow Corps Ramp	US 68/80 W of Cadiz; left on KY 164	●	●	B	P	S	P	26-50	Free	Yes		●	◆	●	
37	Barkley Lake	Bacon Creek - LBL	US 68/80 W of Cadiz; left on KY 453 (Trace Road); left on TVA Road #165; TVA Road #166	●	●	B	P	S	U	< 25	Free			●	●		
38	Barkley Lake	Donaldson Creek - Calhoun Hill	US 68/80 W of Cadiz; left on KY 164 right on Ross School Road	●	●	B	P	S	P	26-50	Free	Yes					
39	Barkley Lake	Ford Bay Boat Ramp	US 60/80 W of Cadiz; left on KY 453 (Trace Road); left on TVA Road #170 (Fords Bay Road)	●	●	B	U	S	U	< 25	Free				●		
40	Barkley Lake	Linton Recreational Area	KY 139 S of Cadiz; right on KY 164	●	●	B	P	S	P	26-50	Free	Yes		◆	◆	◆	





★ **Kentucky Lake**
 Tennessee Valley Authority
 P.O. Box 280
 Paris, Tn. 38242
 901-641-2000

★ **Lake Barkley**
 U.S. Army Corps of Engineers
 PO Box 218
 Grand Rivers, KY 42045-0218
 502-362-4236

See website
www.KentuckyLake.com
 for more information

KENTUCKY LAKE & LAKE BARKLEY

See Basin Index on p.4

Lake Barkley = 57,920 acres (45,600 in KY)
 Kentucky Lake = 160,200 acres (48,100 in KY)

