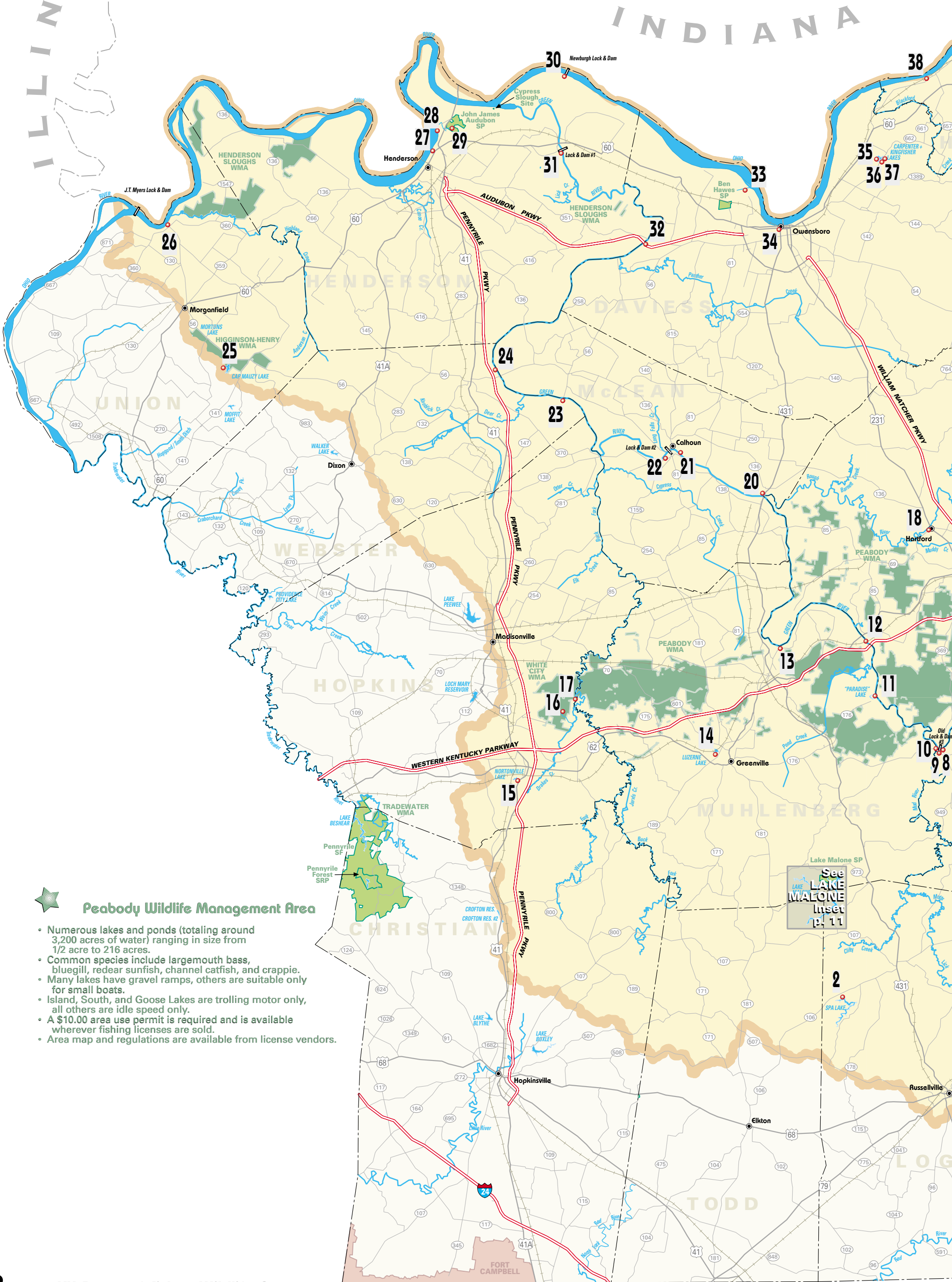


Trout Stream Index

NUMBER	STREAM NAME	LENGTH	LOCATION	TROUT SPECIES
2A	Rough River Lake Tailwater (Rough River)	0.6 Mi.	Hwy 54 Bridge: 0.3 mile above and below bridge	Rainbow
2B	Rough River Lake Tailwater	1 Mi.	Dam to 0.8 mile downstream	Rainbow
2C	Rough Creek	7.4 Mi.	Rough River Lake upstream to 1.75 miles above Pierce Mill Bridge	Rainbow



Peabody Wildlife Management Area

- Numerous lakes and ponds (totaling around 3,200 acres of water) ranging in size from 1/2 acre to 216 acres.
- Common species include largemouth bass, bluegill, redear sunfish, channel catfish, and crappie.
- Many lakes have gravel ramps, others are suitable only for small boats.
- Island, South, and Goose Lakes are trolling motor only, all others are idle speed only.
- A \$10.00 area use permit is required and is available wherever fishing licenses are sold.
- Area map and regulations are available from license vendors.

See **LAKE MALONE** Inset p. 11



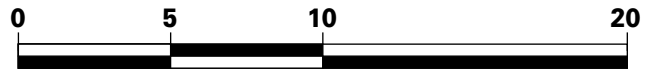
Ohio River Fisheries

By agreement, bordering states will honor Kentucky's sport licenses along their common borders on the **mainstem** of the Ohio River, excluding tributaries and embayments.

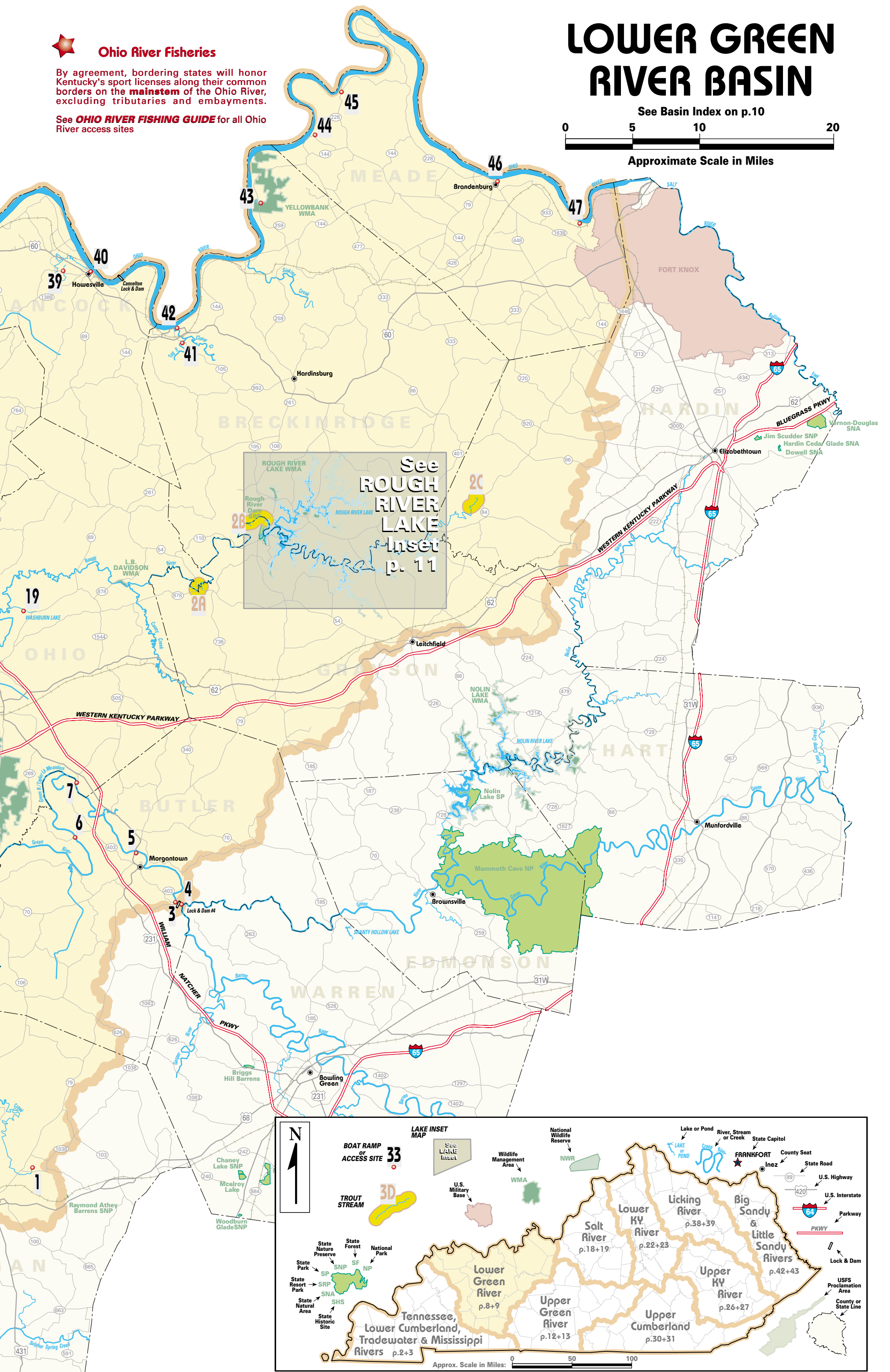
See **OHIO RIVER FISHING GUIDE** for all Ohio River access sites

LOWER GREEN RIVER BASIN

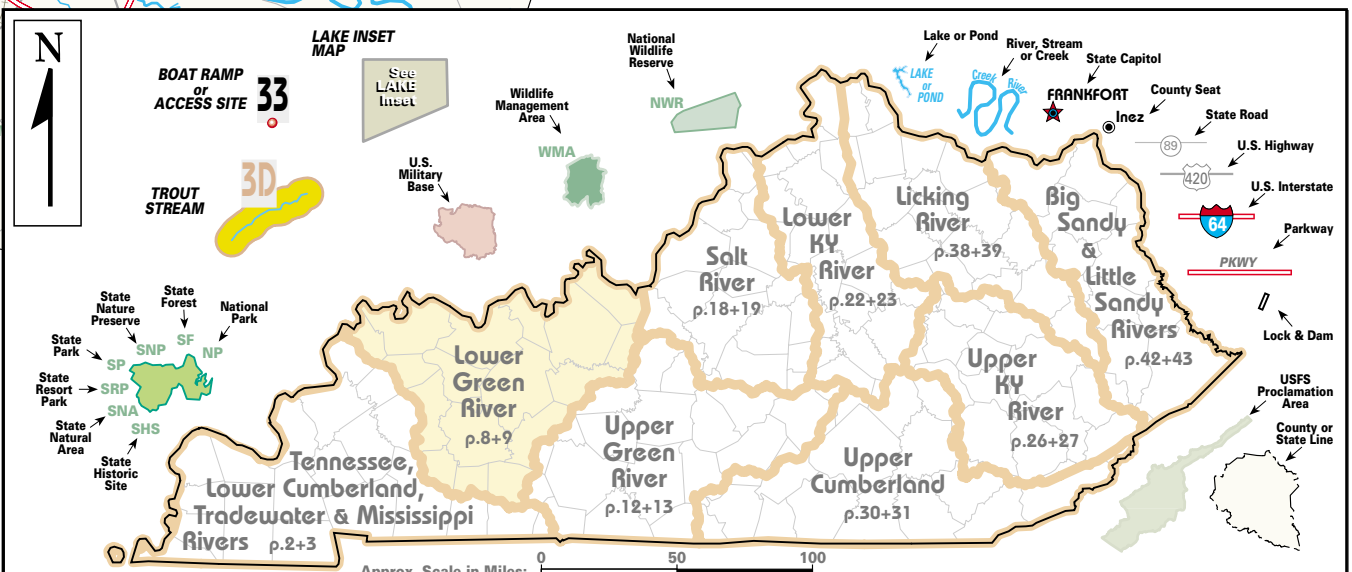
See Basin Index on p.10



Approximate Scale in Miles



See **ROUGH RIVER LAKE** Inset p. 11



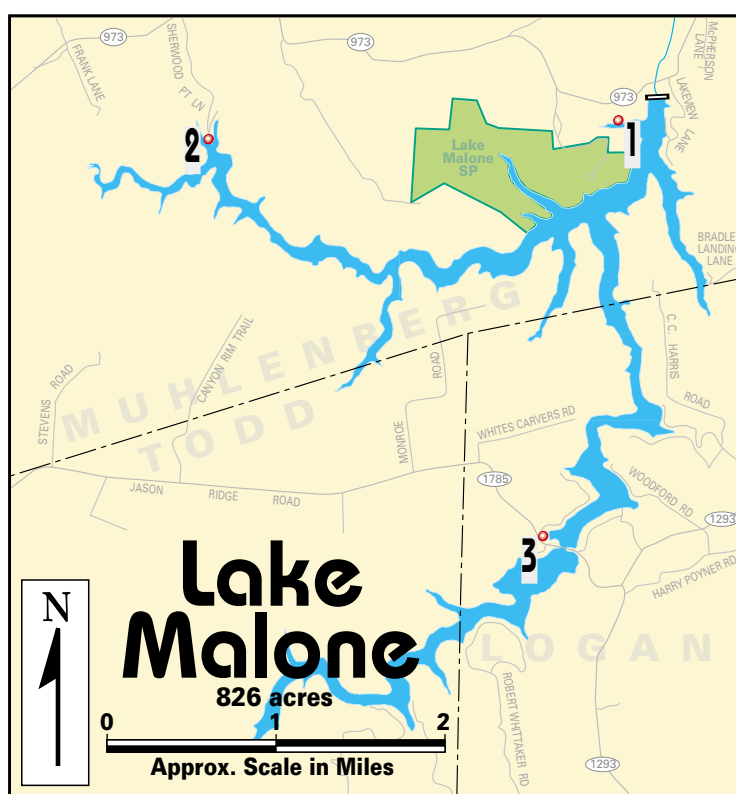
Lower Green River Basin Index

See Map on p.8-9

SITE	Water Body	Area Name	Directions	Shoreline	Boat Ramp	Ramp Type	Ramp Surface	Launch Lanes	Parking	Capacity	Ramp Fee	Courtesy Dock	Handicap Pier	Picnic	Camp	Restrooms	Marina
1	Briggs Lake		KY 79 N of Russellville; right on Hwy 1588 to Briggs Lake Road. Note: 18-acre lake	●	●	B	P	S	U	< 25	Free						
2	Spa Lake		US 431 N of Russellville; left on KY 106 (4 miles); lake on left. Note: 240-acre lake	●	●	B	U	S	U	< 25	Free						
3	Green River	Woodbury - Lock & Dam #4	Hwy 403 S of Morgantown (4.5 miles)	●	●				U	< 25	Free						
4	Green River	Woodbury Ramp	Hwy 403 S of Morgantown (4.5 miles); ramp upstream of dam at confluence	●	●	B	P	S	P	< 25	Free						
5	Green River	Morgantown Ramp	Hwy 79 N of Morgantown (1/2 mile); right at traffic signal before bridge	●	●	B	P	S	U	26-50	Free		●				
6	Green River	Reed's Ferry	Wm. Natcher Parkway N of Morgantown to Logansport exit (KY 403 N); left on Hwy 269 to river	●	●	B	P	S	U	< 25	Free						
7	Green River	Cromwell	US 231 S of Hartford (10.3 miles) to Cromwell; right on KY 403 (0.8 mile) to old ferry landing	●	●	B	P	S	U	< 25	Free						
8	Green River	Rochester Ferry Ramp	KY 70 W of Morgantown to Rochester; KY 369 N to river	●	●	B	U	S	U	< 25	Free						
9	Green River	Rochester Ramp	KY 70 W of Morgantown to Rochester; R. before Mud River Bridge (also accesses Mud River)	●	●	B	P	S	U	< 25	Free						
10	Green River	Rochester Dam	KY 176 E of Greenville to Drakesboro; US 431 S to Browder; KY 70 E to Rochester Dam	●	●	B	P	S	U	< 25	Free						
11	Green River	Paradise Ramp	KY 176 E of Greenville to Drakesboro; Hwy 176 to Paradise; left on Rockport Paradise Haul Road; 1st gravel road on right to ramp	●	●	B	P	S	U	< 25	Free						
12	Green River	Rockport	US 231 S to Beaver Dam (2.9 miles); US 62 W to Rockport; ramp adjacent to railroad crossing of river	●	●	B	P	S	P	< 25	Free						
13	Green River	Reservoir Avenue Ramp	KY 189 N of Greenville to Central City; Hwy 70 E; left on Hwy 277; right on Hwy 1379; 2nd blacktop road to left	●	●	B	P	S	U	< 25	Free						
14	Luzerne Lake	Greenville City Lake	KY 189 S of Greenville (1/2 mile) (visible from KY 189). Note: 55-acre lake	●	●	B	U	S	U	< 25	Free						
15	Nortonville City Lake		US 41A S of Madisonville to Nortonville; right on Squire Road. Note: 44-acre lake	●	●	B	U	S	U	< 25	Free						
16	Multiple Pits & Lakes	White City WMA	Pennyrile Parkway S of Madisonville to Morton Gap exit; left on White City Rd to White City WMA	●	●	B	U	S	U	< 25	Free				●		
17	Pond River	White City WMA	Pennyrile Parkway S of Madisonville to Mortons Gap exit; left on White City Road to boat ramp	●	●	B	P	S	U	< 25	Free			●			
18	Rough River	Hartford City Park	KY 69 SW of Hartford (0.5 mi) on right	●	●	B	P	S	U	< 25	Free		○				
19	Washburn Lake		Hwy 69 NE of Hartford (5.5 miles); left on Washburn Lake Road. Note: 26-acre lake	●	●	B	P	S	U	< 25	Free						
20	Green River	Livermore Ramp	KY 136 E of Calhoun to Livermore; right on US 431; right on 3rd Street; left on Main Street	●	●	A	P	S	U	< 25	Free		◆	◆	◆		
21	Green River	Calhoun Ramp	KY 81 in Calhoun to Green River boat ramp	●	●	B	P	S	P	< 25	Free						
22	Green River	Rumsey Ramp	KY 81 S of Calhoun; right on Walnut Street; left at Second Street to boat ramp	●	●	B	P	S	U	< 25	Free						
23	Green River	Wrightsburg Landing	KY 132 E of Dixon to Sebree; in Sebree, take KY 370 E to Onton; left on KY 147 to Green River. Note: This is an old ferry crossing with very LMT roadside parking and ramp is deteriorated.	●	●	B	P	S	U	< 25	Free						
24	Green River	Old Eastwood Ferry	KY 132 E of Dixon to Sebree; KY 56 E to river; left on blacktop road to landing	●	●	B	P	S	U	< 25	Free						
25	Mauzy Lake	Higginson-Henry WMA	KY 56 SE of Morganfield; follow WMA lake signs. Note: 85-acre lake	●	●	B	P	S	U	< 25	Free		●	●			
26	Ohio River	Uniontown	KY 130 N of Morganfield past flood wall to Uniontown boat ramp	●	●	B	P	M	P	26-50	Free						
27	Ohio River	Henderson Ramp	In Henderson at end of Second Street	●	○	A	P	M	P	26-50	\$						●
28	Ohio River	Hayes Boat Ramp	In Henderson off Elm Street (trailer sticker required from city to use ramp)	●	●	A	P	M	P	50 +	Free	Yes	●	◆	◆	◆	
29	Audubon State Pk. Lake	Audubon SP	US 41 N of Henderson to state park. Note: 25-acre lake	●	●	B	P	S	P	< 25	Free	Yes	●	●	●		
30	Ohio River	Newburgh Dam	US 60 E of Henderson; N on Hwy 811 to Ohio River Road #2; to dam. Note: Hwy 811 is near Spottsville Dam on east side of Green River	●	●				U	< 25	Free						
31	Green River	Spottsville	US 60 E of Henderson; turn right at bridge on Hatchett Mill Road to ramp. Note: ramp is upstream of Lock and Dam #1	●	●	A	P	S	U	< 25	Free						
32	Green River	Hamilton Ferry Road	US 60 W of Owensboro to Stanley; left on Hwy 1554; right on Hamiltons Ferry Road	●	●	B	U	S	U	< 25	Free						
33	Ohio River	Little Hurricane Boat Ramp	US 60 W of Owensboro; right on Industrial Drive (Hwy 331) (3 miles); right on Little Hurricane Road	●	●	A	P	M	P	26-50	Free						
34	Ohio River	Owensboro (Fredrica Street)	US 431 N (Frederica Street) through Owensboro to boat ramp	●	●	A	P	M	P	26-50	Free	Yes					◆
35	Carpenter Lake		US 60 E of Owensboro to Maceo; right on Hwy 405. Note: 64-acre lake	●	●	B	P	S	U	< 25	Free		●				
36	Kingfisher Lake	New Kingfisher Lake	US 60 E of Owensboro to Maceo; right on Hwy 405. Note: 22-acre lake	●	●	B	P	S	U	< 25	Free						
37	Kingfisher Lake	Old Kingfisher Lake	US 60 E of Owensboro to Maceo; right on Hwy 405. Note: Old Kingfisher - 14-acre lake;	●	●	B	P	S	U	< 25	Free						
38	Ohio River	Lewisport Ramp	US 60 W of Hawesville to Lewisport; KY 657 N; left on KY 334 (1 mile); turn on Morton's Lane; left on Riverview Drive	●	●	A	P	S	U	< 25	Free		●				
39	Vastwood Pk. Lake	Vastwood Park	US 60 E of Hawesville (3 miles); left at Vastwood Park. Note: 20-acre lake	●	●	B	U	S	P	< 25	Free		●	●	●		
40	Ohio River	Hawesville Ramp	US 60 in Hawesville; first street N of courthouse; follow levee to floodgate passage to ramp. Note: access to Cannerton Lock & Dam tailwater	●	●	A	P	M	P	< 25	Free						
41	Ohio River	Tar Fork/Clover Creek Ramp	US 60 W of Hardinsburg; Hwy 105 S of Cloverport to ramp	●	●	B	P	M	P	26-50	Free						
42	Ohio River	Cloverport Ramp	US 60 W of Hardinsburg to Cloverport; ramp on old Hwy 60 E of Cloverport	●	●	B	U	S	U	< 25	Free						
43	Yellowbank Creek	Yellowbank WMA	KY 259 N of Hardinsburg to Yellowbank WMA	●	●	B	P	S	U	< 25	Free				●		
44	Ohio River	Concordia Park Ramp	Hwy 1692 W of Brandenburg; right on KY 144 (10 miles); right on KY 230 to Concordia	●	●	B	P	S	P	26-50	Free						
45	Ohio River	Wolf Creek Ramp	KY 228 W of Brandenburg to river; follow signs	●	●	B	P	S	U	< 25	Free						
46	Ohio River	Flippings Run Park Ramp	In Brandenburg at Riverview Park on Main Street	●	○	A	P	S	P	26-50	Free		○				
47	Ohio River	Otter Creek Park	KY 448 E of Brandenburg; left on Hwy 1638 to Otter Creek Park Road (left)	●	●				P	< 25	Free		◆	◆	◆		

Index Legend

A	"A" Ramp - any trailerable recreational boat
B	"B" Ramp - any LIGHT trailerable recreational boat
C	"C" Ramp - carry-down only
S	Single launch lane
M	Multiple launch lanes
P	Paved ramp/parking lot
U	Unpaved ramp/parking lot
<25	Number of vehicles
	Handicap Accessible
●	Year-round 24 hours
○	Year-round limited hours
◆	Seasonal 24 hours
◇	Seasonal limited hours

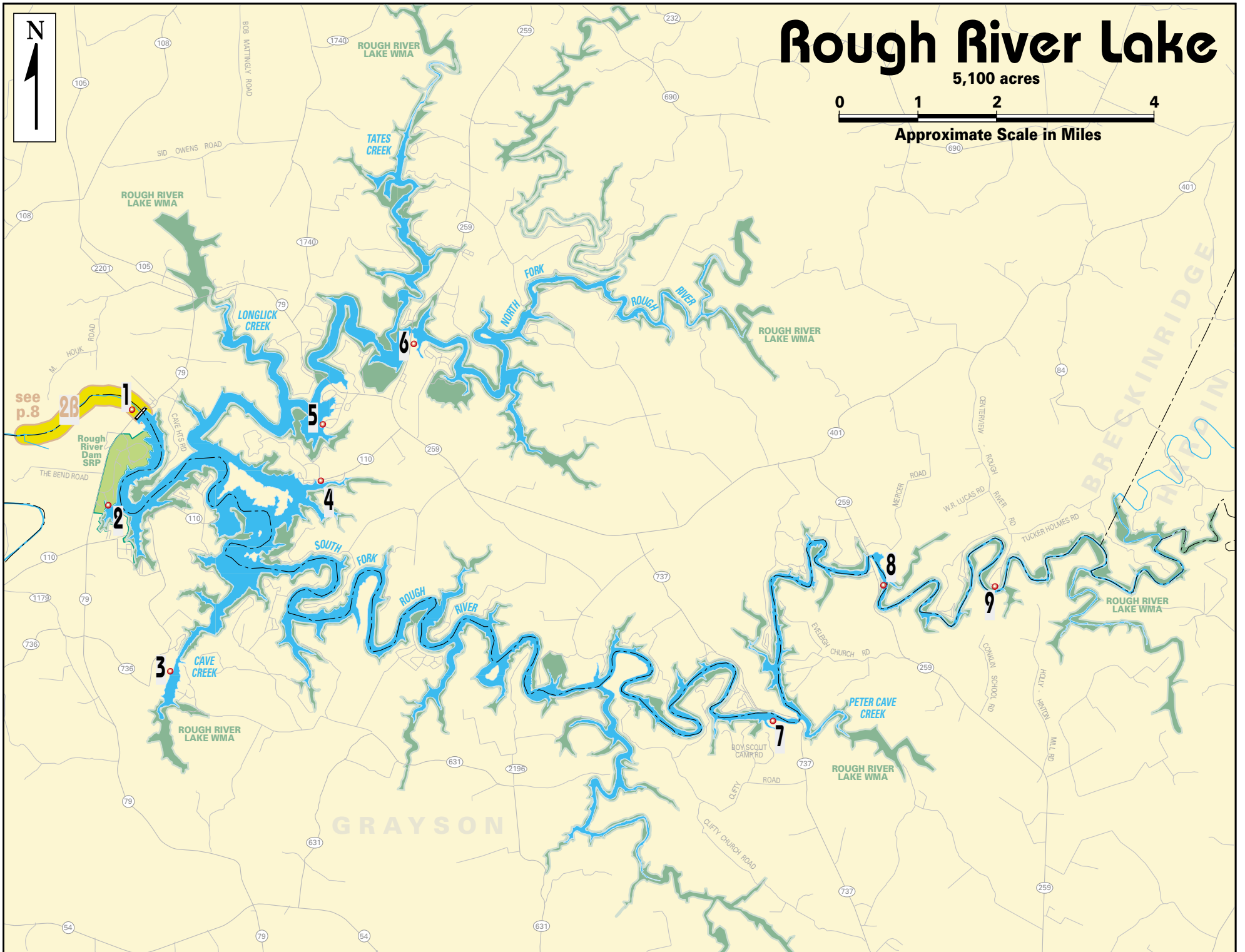


Lake Malone Index

SITE	Water Body	Area Name	Directions	Shoreline	Boat Ramp	Ramp Type	Ramp Surface	Launch Lanes	Parking	Capacity	Ramp Fee	Courtesy Dock	Handicap Pier	Picnic	Camp	Restrooms	Marina
1	Lake Malone	Lake Malone State Park	KY 176 E of Greenville to Drakesboro; US 431 S to Dunmore; KY 973 W to Lake Malone SP Ramp sign	●	●	B	P	M	P	26-50	Free	Yes		●			○
2	Lake Malone	Sherwood Point	KY 181 S of Greenville to KY 973 (follow lake signs); E to Sherwood Point Lane to ramp	●	●	B	P	S	P	< 25	Free						
3	Lake Malone	Noffsingers Marina	US 431 N of Russellville; left on Hwy 1293; right on Hwy 1785; follow signs. Note: 826-acre lake	●	●	B	P	S	U	< 25	\$	Yes				○	○

Rough River Lake Index

SITE	Water Body	River Name	Directions	Shoreline	Boat Ramp	Ramp Type	Ramp Surface	Launch Lanes	Parking	Capacity	Ramp Fee	Courtesy Dock	Handicap Pier	Picnic	Camp	Restrooms	Marina
1	Rough River Lake	Tailwater	KY 259 S of Leitchfield; right on KY 79 to lake; see signs	●	●	A	P	M	P	< 25	Free				◆	●	
2	Rough River Lake	State Park Marina	WK Parkway W of Leitchfield to Caneyville; KY 79 N to state park	●	●	A	P	M	P	50 +	Free	Yes		●	●	●	○
3	Rough River Lake	Cave Creek Ramp	WK Parkway W of Leitchfield to Caneyville; KY 79 N; right on KY 736 to ramp site	●	●	A	P	M	P	50 +	\$			●	●		
4	Rough River Lake	Laurel Branch Ramp	KY 259 S of Hardinsburg; right on KY 110 to lake	●	●	A	P	M	P	< 25	Free				●	●	○
5	Rough River Lake	Axtel Ramp	KY 259 S of Hardinsburg; right on KY 79; follow signs	●	●	A	P	M	P	26-50	Free	Yes		●	●	●	●
6	Rough River Lake	North Fork Ramp	KY 259 S of Hardinsburg to lake; follow signs	●	●	A	P	M	P	26-50	Free				●	○	
7	Rough River Lake	Peter Cave Ramp	KY 259 N of Leitchfield; left on KY 737 to ramp site	●	●	A	P	M	P	50 +	\$			●		●	○
8	Rough River Lake	Eveleigh Ramp	KY 259 N of Leitchfield; watch for ramp sign	●	●	B	P	M	U	< 25	Free						
9	Rough River Lake	Adkins Camp	KY 79 S of Hardinsburg; KY 259 S; KY 401 N to Centerville - Rough River Road	●	●	B	U	S	U	< 25	Free						



Rough River Lake

U.S. Army Corps of Engineers
14500 Falls of Rough Road
Falls of Rough, KY 40119-9801
270-257-2061



Caring for Your Personal Flotation Device

Follow these points to be sure your PFD stays in good condition:

- Don't alter your PFD. If yours doesn't fit, get one that does. Play it safe. An altered PFD may not save your life.
- Don't put heavy objects on your PFD or use it for a kneeling pad or boat fender. PFDs lose buoyancy when crushed.
- Let your PFD drip dry thoroughly before putting it away and always stow it in a well-ventilated place.
- Don't leave your PFD on board for long periods when the boat is not in use.
- Never dry your PFD on a radiator, heater or any other direct heat source.
- Put your name on your PFD if you're the only wearer.
- Practice throwing your Type IV PFD: Cushions throw best underhand.



Springtime hybrid striped bass fishing

© Soc Clay, Inc.