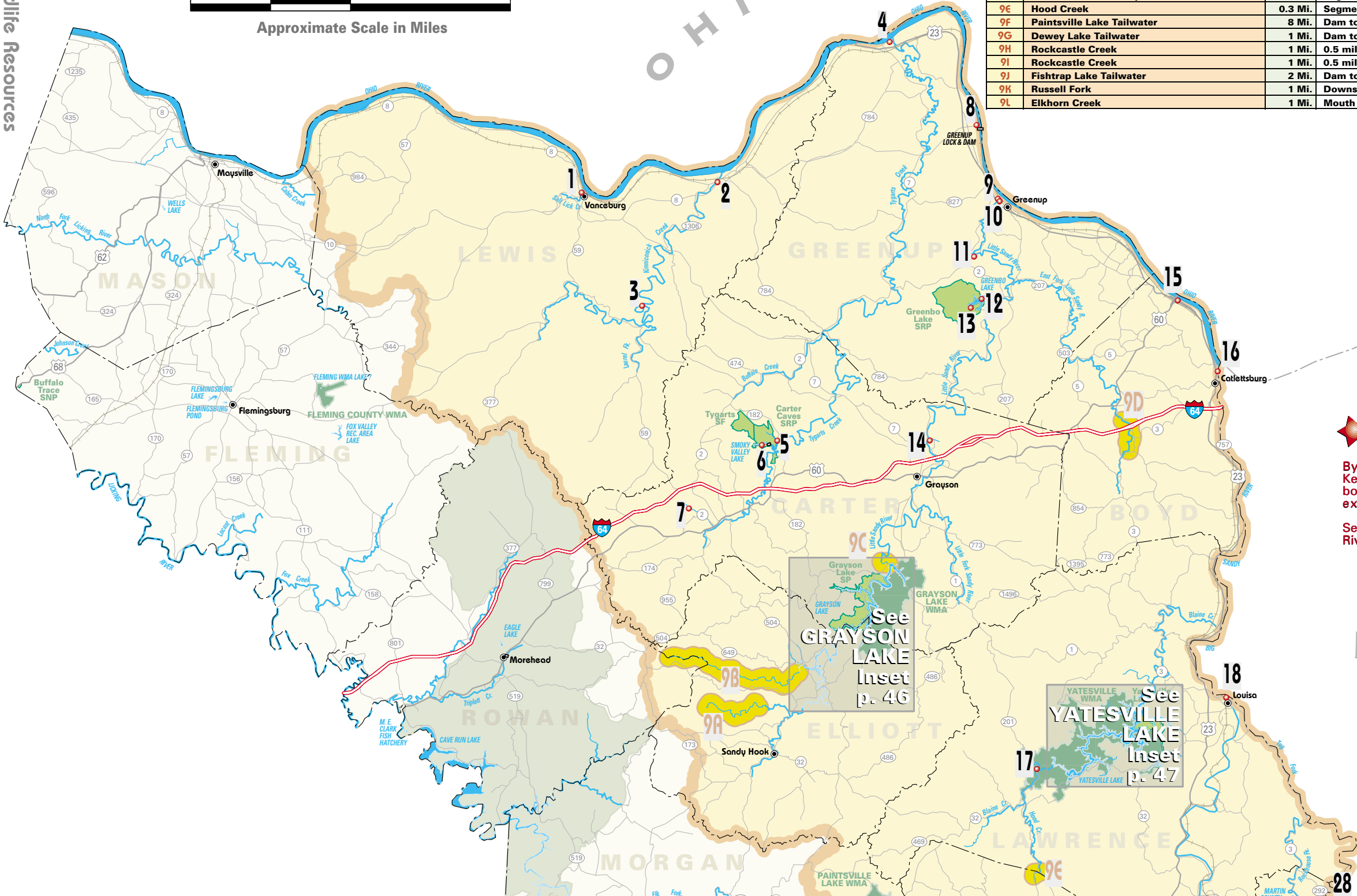


BIG SANDY RIVER & LITTLE SANDY RIVER BASIN

See Basin Index on p.44



Approximate Scale in Miles



Trout Stream Index

NUMBER	STREAM NAME	LENGTH	LOCATION	TROUT SPECIES
9A	Laurel Creek	5 Mi.	0.9 mile above Carter School Road crossing to 4.1 miles downstream	Brown/Rainbow
9B	Big Caney Creek	9 Mi.	Mouth to 10.0 miles upstream	Brown/Rainbow
9C	Grayson Lake Tailwater	1 Mi.	Dam to 1.0 mile downstream	Rainbow
9D	East Fork Little Sandy River	2 Mi.	Segment bisected by I-64	Rainbow
9E	Hood Creek	0.3 Mi.	Segment at Lawrence/Johnson county line	Rainbow
9F	Paintsville Lake Tailwater	8 Mi.	Dam to mouth of Paint Creek	Brown/Rainbow
9G	Dewey Lake Tailwater	1 Mi.	Dam to 0.5 mile downstream	Rainbow
9H	Rockcastle Creek	1 Mi.	0.5 mile upstream from jct. of Hwy 1884 and Rte. 3 to 0.5 mile below	Rainbow
9I	Rockcastle Creek	1 Mi.	0.5 mile upstream from Upper Alpha Branch to 0.5 miles below	Rainbow
9J	Fishtrap Lake Tailwater	2 Mi.	Dam to 1.7 miles downstream	Rainbow
9K	Russell Fork	1 Mi.	Downstream from mouth of Elkhorn Creek	Rainbow
9L	Elkhorn Creek	1 Mi.	Mouth to 1.0 mile upstream	Rainbow



Ohio River Fisheries

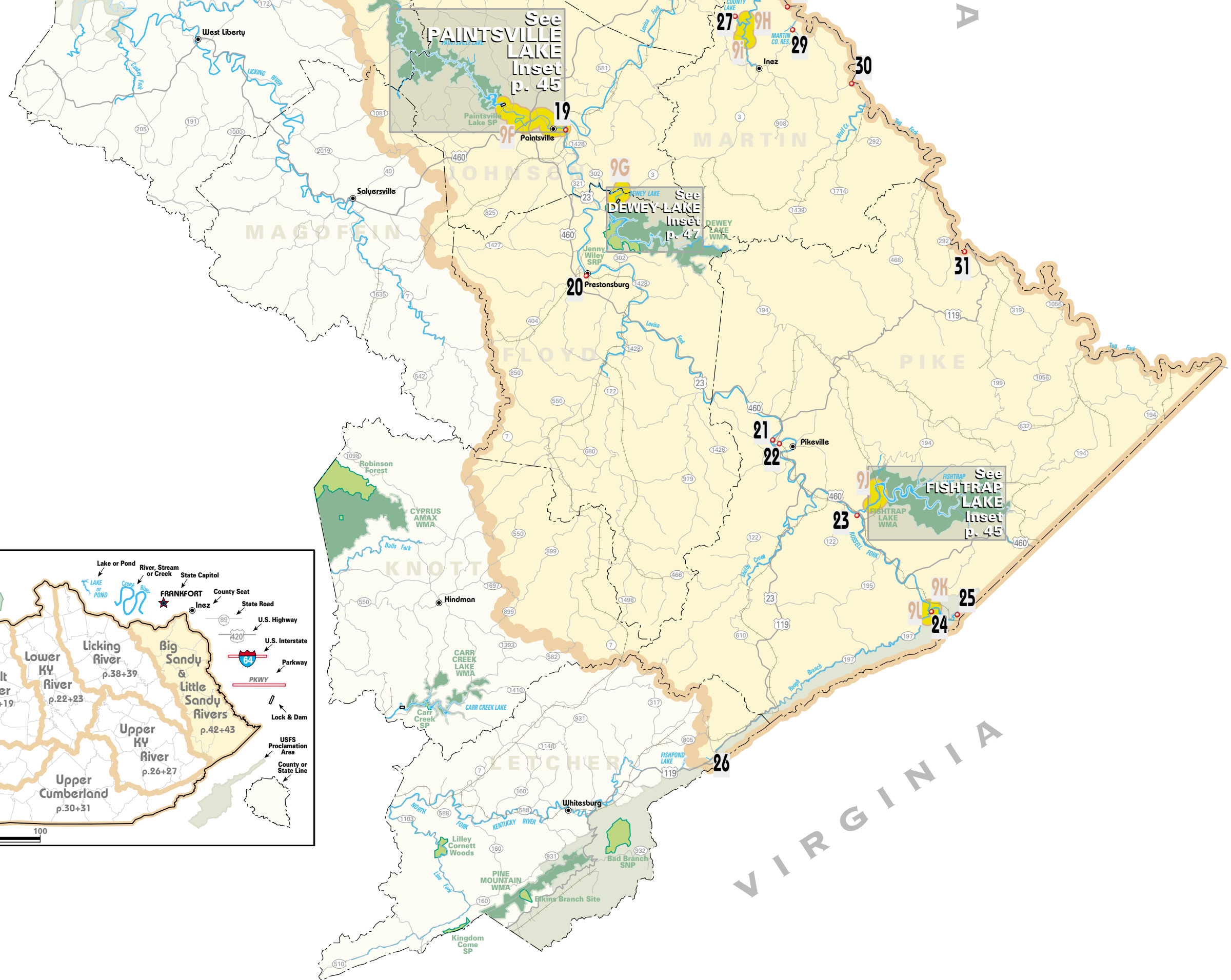
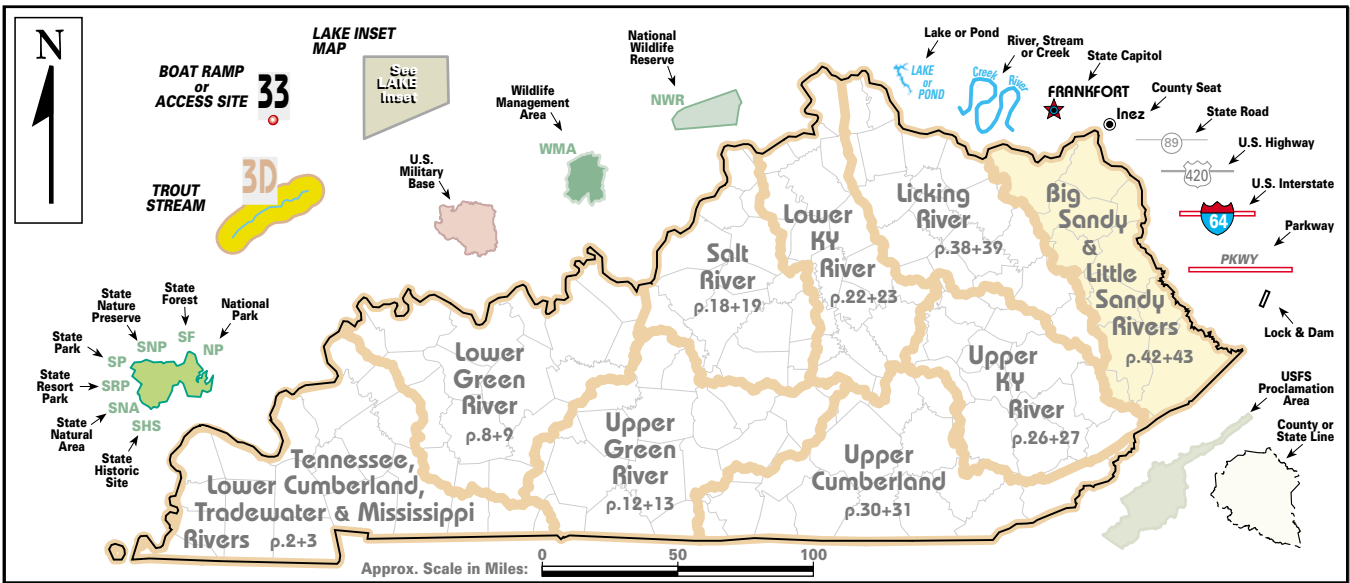
By agreement, bordering states will honor Kentucky's sport licenses along their common borders on the **mainstem** of the Ohio River, excluding tributaries and embayments.

See **OHIO RIVER FISHING GUIDE** for all Ohio River access sites

See **GRAYSON LAKE** Inset p. 46

See **YATESVILLE LAKE** Inset p. 47

VIRGINIA
WEST VIRGINIA



Big Sandy River & Little Sandy River Basin

See Map on p.42+43

SITE	Water Body	Area Name	Directions															
				Shoreline	Boat Ramp	Ramp Type	Ramp Surface	Launch Lanes	Parking	Capacity	Ramp Fee	Courtesy Dock	Handicap Pier	Picnic	Camp	Restrooms	Marina	
1	Ohio River	Salt Lick Creek Ramp	KY 8 W of Vanceburg; right at Shoe Factory	●	●	B	P	M	P	P	< 25	Free						
2	Kinniconick Creek	Garrison Ramp	KY 10 E of Vanceburg to Garrison; ramp near bridge. Note: access for Ohio River also	●	●	B	P	M	P	P	26-50	Free		●				
3	Kinniconick Creek	Puncheon/Pipe Lick	KY 59 S of Vanceburg (10 miles); left on Ky 2524 at Camp Dix for 3 miles to gravel road on right. Note: 4WD needed		●	C			U	U	< 25	Free						
4	Ohio River	South Shore	US 23 NW of Greenup to South Shore; turn right at Jct of KY 7 and follow road to river. Note: Ramp in need of repair. Note: bank fishing only	●					U	U	< 25	Free						
5	Tygarts Creek	Carter Caves State Park	US 60 W of Grayson; right on Hwy 182 to bridge	●	●	C			U	U	< 25	Free						
6	Smoky Valley/Carter Caves Lake	Smoky Valley/Carter Caves Lake Ramp	I-64 W of Grayson (Exit 161); turn right and follow signs to Carter Caves State Park. Note: 36-acre lake; electric motors only; daylight fishing only.	○	○	B	P	S	U	U	< 25	Free		●	●	●		
7	Olive Hill Reservoir	Olive Hill	I-64 W of Grayson; Hwy 2 S exit; right on US 60; right on Hwy 2078. Note: 23-acre lake	●					U	U	< 25	Free						
8	Ohio River	Greenup Lock and Dam	US 23 NW of Greenup; right on Hwy 3116; next right; follow signs to lock and dam. Note: walk-in area below dam	●					P	P	< 25	Free						
9	Little Sandy River	Greenup Ramp	US 23 NW of Greenup (1/4 mile)	●	●	B	P	M	P	P	26-50	Free		●				
10	Ohio River	Greenup Ramp	In Greenup adjacent to courthouse; LMT parking		●	B	P	S	P	P	< 25	Free						
11	Little Sandy River	Raccoon Ramp	KY 2 SW of Greenup (6 miles) at bridge crossing	●	●	B	P	S	U	U	< 25	Free						
12	Greenbo Lake	Dam area - Greenbo Lake State Park	KY 1 S of Greenup; right on Claylick Creek Road. Note: 181-acre lake	●					U	U	< 25	Free						
13	Greenbo Lake	Greenbo Lake State Park	KY 1 S of Greenbo; right on Hwy 1711; follow signs. Note: 181-acre lake; idle speed only	●	●	B	P	M	P	P	26-50	Free	●	●	●	♿	◇	
14	Little Sandy River	Pactolus	KY 1 N of Grayson; right on Hwy 1910; past bridge		●	C			U	U	< 25	Free						
15	Ohio River	Ashland Ramp	In Ashland; N end of 16th Street behind floodwall	●	●	B	P	M	P	P	26-50	Free						
16	Ohio River	Catlettsburg Ramp	In Catlettsburg; Division Street behind flood wall at boat club		●	B	P	S	P	P	26-50	Free						
17	Yatesville Lake	Yatesville Lake WMA	KY 32 W of Louisa to lake; follow signs to WMA. Note: LMT parking	◆	◆	C			U	U	< 25	Free						
18	Tug Fork Big Sandy River	Louisa Ramp	In Louisa on Hwy 2566	●	●	B	P	S	P	P	< 25	Free						
19	Levisa Fork Big Sandy River	Paintsville Boat Ramp	KY 40 in Paintsville; SE on Hwy 1428; Depot Road (water plant road) to river		●	B	P	S	U	U	< 25	Free						
20	Levisa Fork River	Prestonsburg Ramp	In Prestonsburg across from The Bank Josephine		●	B	P	S	P	P	< 25	Free		●				
21	Levisa Fork Big Sandy River		US 23 N of Pikeville to junction of Hwy 1384. Note: no official parking area	●	●	C			U	U	< 25	Free						
22	Hambley Lake		US 23 in Pikeville. Note: 15-acre lake	○					U	U		Free						
23	Levisa Fork Big Sandy River	Millard	KY 80 SE of Pikeville; left on US 460; left on Hwy 1789 exit; ramp under 460 bridge. Note: no official parking area	●	●	C			U	U	< 25	Free						
24	Elkhorn Creek	Russell Fork	US 460 S of Pikeville. US 23/460 S of Pikeville to US 80 SE to Elkhorn City; access at junction of KY 197 & US 80	●					U	U	< 25	Free						
25	Russell Fork	Breaks Interstate Park	US 23/460 S of Pikeville to US 80 SE past Elkhorn City just inside Breaks State Park Boundary	○	●	C			U	U	< 25	Free						
26	Jenkins Lake		US 119 N of Whitesburg to US 23/119 at Jenkins; in city limits N of town. Note: 10-acre lake	●					P	P	< 25	Free						
27	Martin County Lake		KY 40 W of Inez; KY 645 N; Hwy 1884 E (Milo Road). Note: 5-acre lake	●	●	B	U	S	U	U	< 25	Free						
28	Tug Fork Big Sandy River	Calf Creek	KY 40 E of Inez; left on KY 908; left on KY 292; left to Calf Creek. Note: no official parking area	●	●	C			U	U	< 25	Free						
29	Martin County Reservoir		KY 908 E of Inez; left on Turkey Creek Road. Note: 19-acre lake	●	●	C			U	U	< 25	Free						
30	Tug Fork Big Sandy River	Warfield Ramp	KY 40 E of Inez to Warfield; left on KY 292 to ramp	●	●	B	P	S	P	P	< 25	Free		●				
31	Tug Fork Big Sandy River		US 119 NE of Pikeville to South Williamson; KY 292 NW for 1 mile; see signs	●	●	A	P	S	U	U	< 25	Free						

Index Legend

A	"A" Ramp - any trailerable recreational boat		
B	"B" Ramp - any LIGHT trailerable recreational boat		
C	"C" Ramp - carry-down only		
S	Single launch lane	♿	Handicap Accessible
M	Multiple launch lanes	●	Year-round 24 hours
P	Paved ramp/parking lot	○	Year-round limited hours
U	Unpaved ramp/parking lot	◆	Seasonal 24 hours
<25	Number of vehicles	◇	Seasonal limited hours



Many reservoirs offer smallmouth bass fishing.

© Soc Clay, Inc.



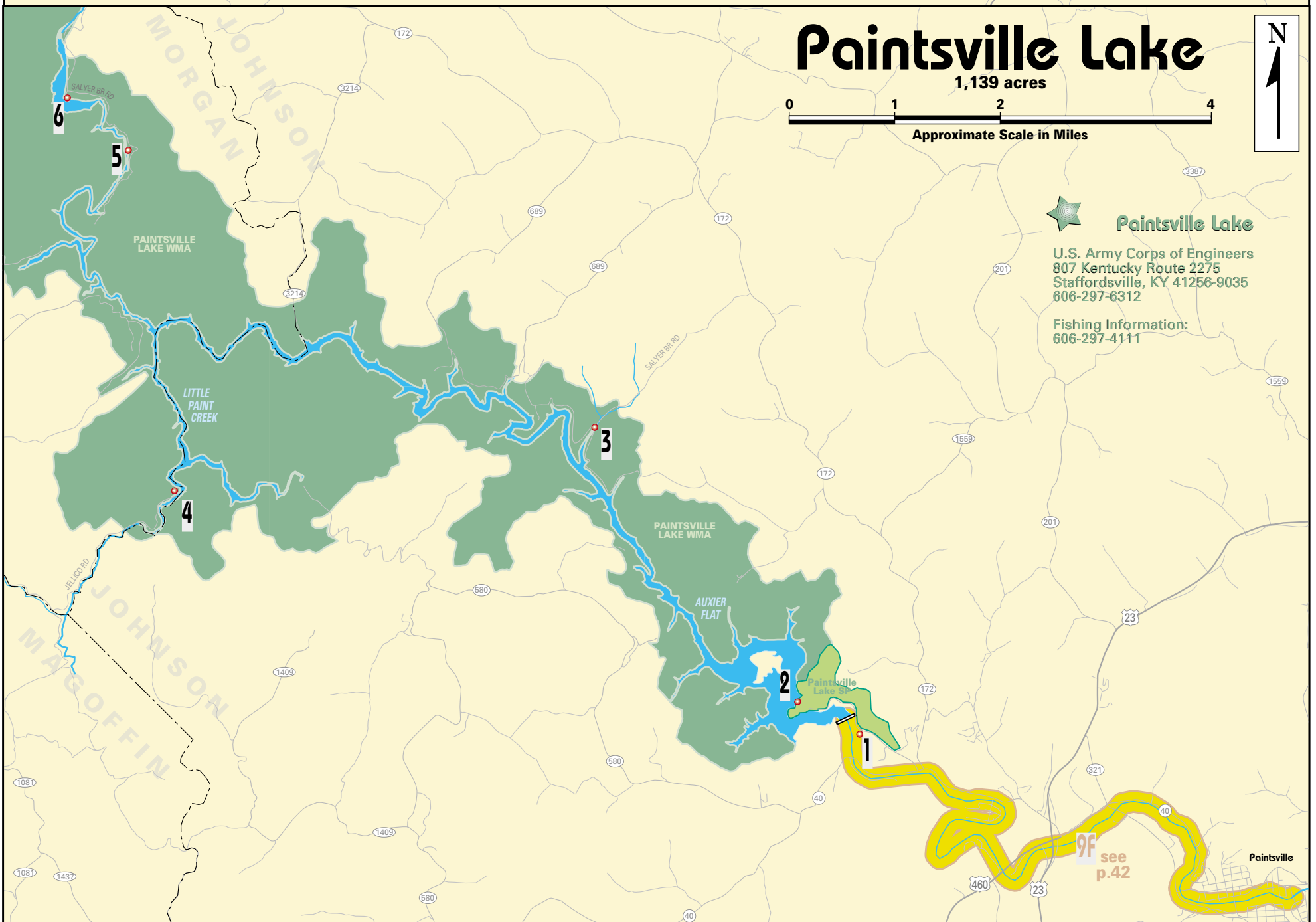
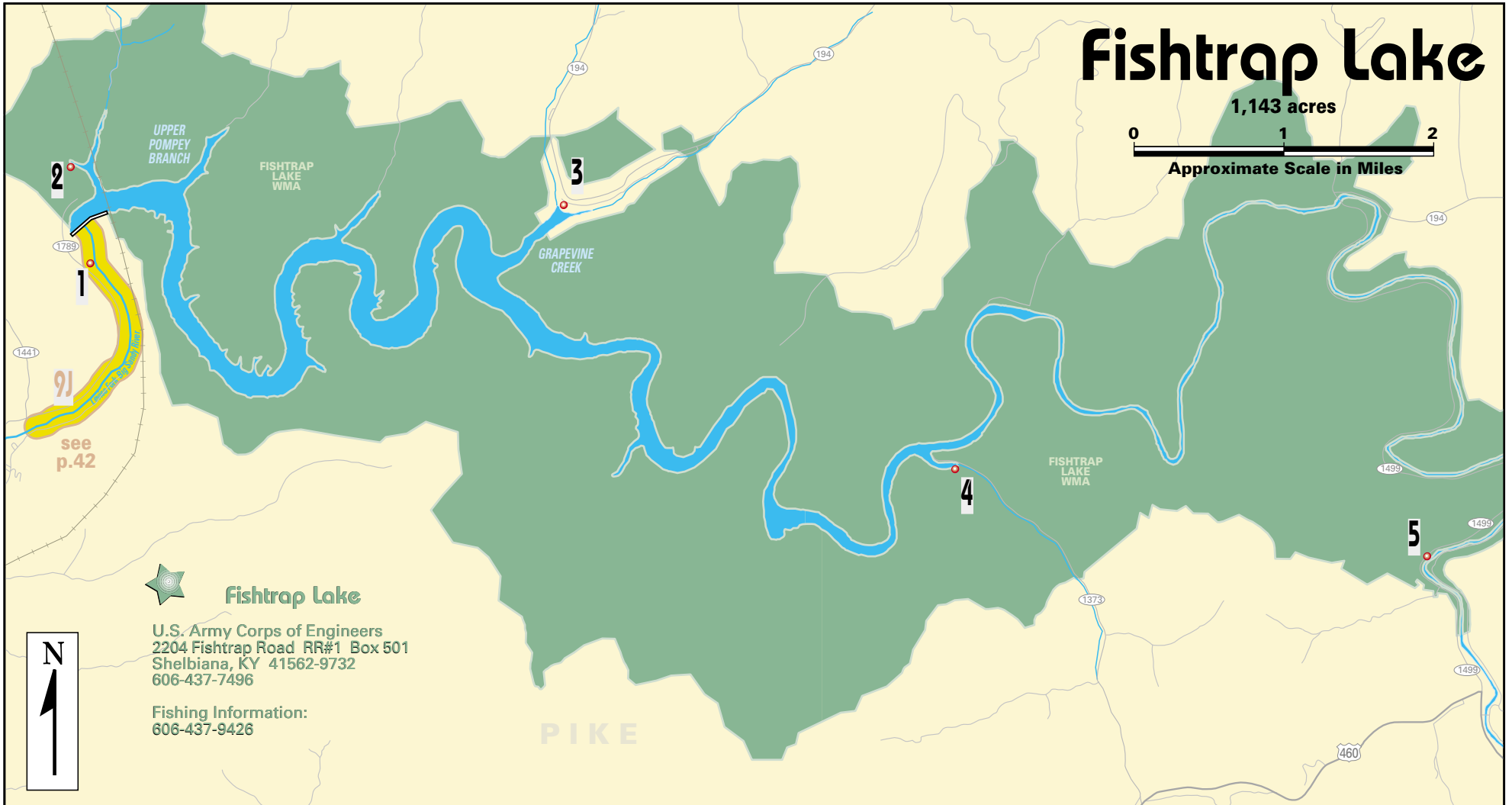
Federal Aid Project
funded by your purchase
of fishing equipment
and motor boat fuels

Fishtrap Lake Index

Site	Water Body	Area Name	Directions	Shoreline	Boat Ramp	Ramp Type	Ramp Surface	Launch Lanes	Parking	Capacity	Ramp Fee	Courtesy Dock	Handicap Pier	Pknic	Camp	Restrooms	Marina
1	Fishtrap Lake	tailwater	KY 80 SE of Pikeville; left on Hwy 1789	●					U	26-50	Free	-					
2	Fishtrap Lake	Dam Ramp	KY 80 SE of Pikeville; left on US 460; left on Hwy 1789	●	●	A	P	M	P	50 +	\$	Yes	◆			●	○
3	Fishtrap Lake	Grapevine Ramp	US 23 N of Pikeville; right on US 119; right on KY 194 to Phyllis; follow signs to lake	◆	◆	B	P	S	P	26-50	\$	-	◆	◆	◆		
4	Fishtrap Lake	Lick Creek Ramp	KY 80 SE of Pikeville; left on US 460; left on 1373 to ramp	●	◆	A	P	S	P	< 25	Free	-	◆				
5	Levisa Fork	Fishtrap Lake WMA	KY 80 SE of Pikeville; left on US 460 to Mouthcard; left on Hwy 1499 to wildlife management area	○					U	< 25	Free	-					

Paintsville Lake Index

1	Paintsville Lake	Tailwater	KY 40 W of Paintsville to Staffordsville; follow signs	●		C			P	26-50	Free		●	●		●	
2	Paintsville Lake	Paintsville Lake State Park Ramp	KY 40 W of Paintsville; right on Hwy 2275 to lake	●	●	A	P	M	P	50 +	Free	Yes				◆	○
3	Paintsville Lake	Paintsville Lake WMA	1) KY 40 W of Paintsville; right on Hwy 172; left on Stonecoal Road. 2) KY 40 W of Paintsville; right on Ky 580; several side roads access lake	●					U	< 25	Free						
4	Paintsville Lake	Big Mine Fork Ramp	KY 40 E of Salyersville; Hwy 1437 N to Wheelersburg; right on Hwy 5041 (Jellico Branch Road - Big Mine Fork) to ramp	●	●	B	P	S	U	< 25	Free						
5	Paintsville Lake	Paintsville Lake WMA	KY 172 E of West Liberty to Relief; right on gravel road. Note: private campground; fee for camping	●					U	< 25	Free				●		
6	Paintsville Lake	Open Fork Boat Ramp	KY 172 E of West Liberty to Relief; right on gravel road. Note: private campground; fee for camping	●	●	A	P	S	U	< 25	Free				●		



Grayson Lake Index

SITE	Water Body	Area Name	Directions	Shoreline	Boat Ramp	Ramp Type	Ramp Surface	Launch Lanes	Parking	Capacity	Ramp Fee	Courtesy Dock	Handicap Pier	Picnic	Camp	Restrooms	Marina
1	Grayson Lake	Grayson Lake Tailwater	KY 7 S of Grayson; 1st road on right after crossing dam. Note: trout stocking site	◆	●				U	< 25	Free	-					
2	Grayson Lake	Dam Ramp	KY 7 S of Grayson; 1st road on left after crossing dam	●	●	A	P	M	P	50 +	\$	Yes	●			◆	◇
3	Grayson Lake	Clifty Creek Ramp	KY 7 S of Grayson; pass dam on Grayson Lake; right on gravel road just before bridge over Clifty Creek arm. Note: somewhat steep; old road bed; short turn around; access LMT to smaller boats	●	●	B	P	S	U	< 25	Free	-	●	●			
4	Grayson Lake	Bruin Creek	KY 7 N of Sandy Hook; follow signs to lake (before entering Carter County)	●	●	A	P	M	P	50 +	Free	Yes	●	●	●	◆	◇
5	Grayson Lake	Caney Creek	KY 7 N of Sandy Hook; left on Ky 504	●	●	B	P	S	U	< 25	Free	-					



Grayson Lake

U.S. Army Corps of Engineers
50 Launch Ramp Road
Grayson, KY 41143-9612
606-474-5815

Fishing Information:
606-474-7476

Index Legend

A	"A" Ramp - any trailerable recreational boat	♿	Handicap Accessible
B	"B" Ramp - any LIGHT trailerable recreational boat	●	Year-round 24 hours
C	"C" Ramp - carry-down only	○	Year-round limited hours
S	Single launch lane	◆	Seasonal 24 hours
M	Multiple launch lanes	◇	Seasonal limited hours
P	Paved ramp/parking lot		
U	Unpaved ramp/parking lot		
<25	Number of vehicles		



Hybrid Striped Bass Waters

Lakes

- Barren River Lake
- Rough River Lake
- Taylorsville Lake
- Herrington Lake
- Grayson lake
- Fishtrap Lake
- Dewey Lake
- Guist Creek Lake (Shelby County)
- Williamstown Lake (Grant County)

Ohio River along Ohio border is stocked by Ohio

Yatesville Lake Index

Site	Water Body	Area Name	Directions	Shoreline	Boat Ramp	Ramp Type	P	M	P	U	Capacity	Ramp Fee	Courtesy Dock	Handicap Pier	Picnic	Camp	Restrooms	Marina
1	Yatesville Lake	Tailwater	KY 3 N of Louisa; left on Hwy 3397; left on Hwy 1185	○					P		< 25	Free					○	
2	Yatesville Lake	Barkers Marina Ramp	KY 3 N of Louisa; left on Hwy 3397; left on Hwy 1185	●	●	A	P	M	P	U	50 +	Free	Yes	●	●	●	○	○
3	Yatesville Lake	Twin Branch Ramp	KY 3 N of Louisa; left on KY 1; left on KY 828 (which becomes Twin Branch Road) to ramp	●	●	B	P	S	U		< 25	Free						
4	Yatesville Lake	Pleasant Ridge Ramp	KY 32 W of Louisa to Pleasant Ridge Road		●	B	P	S	U		< 25	Free						
5	Yatesville Lake	Rich Creek Ramp	KY 32 W of Louisa; follow signs	◆	◆	B	P	M	U		26-50	Free	Yes					◆

Dewey Lake Index

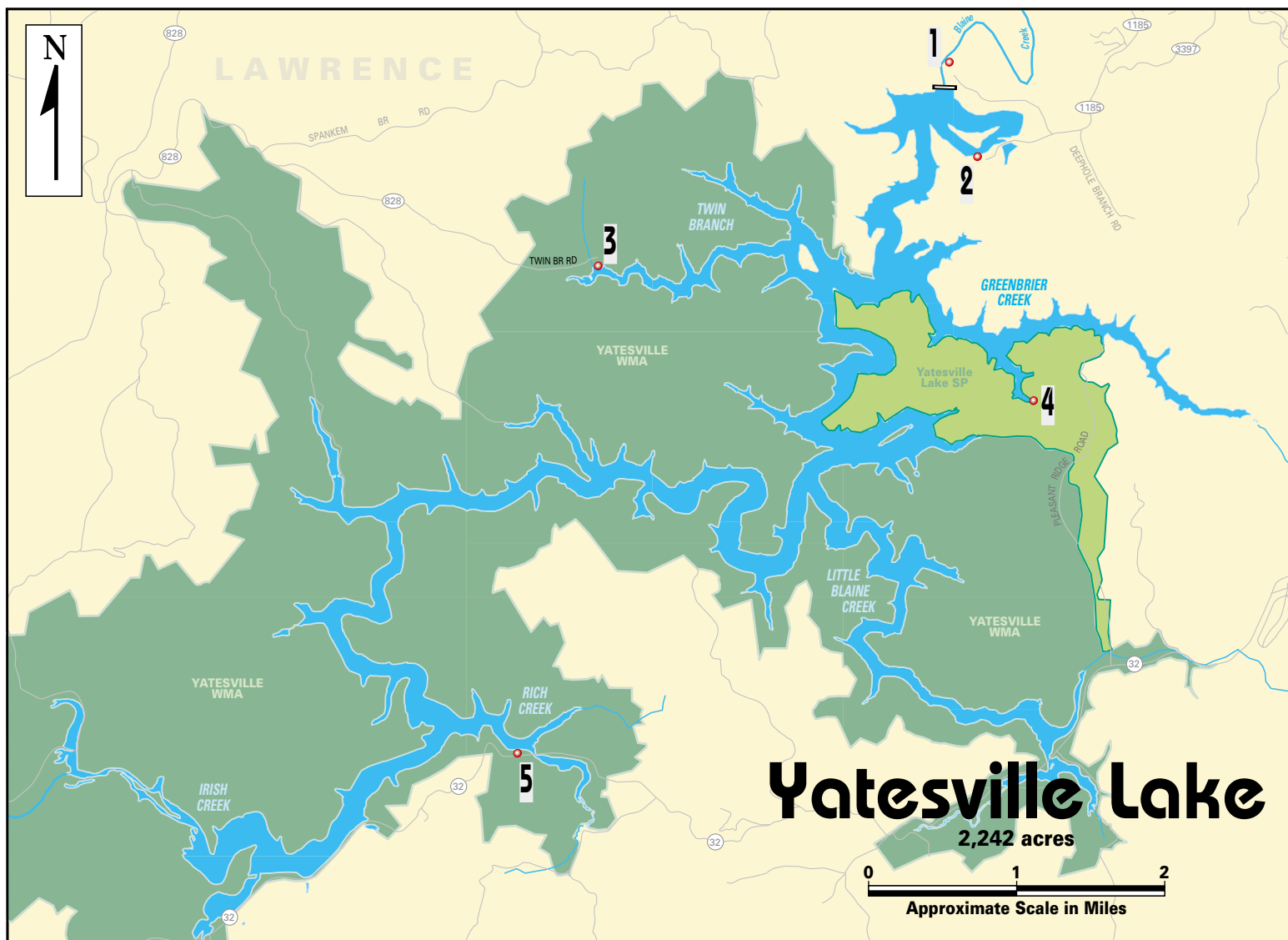
1	Dewey Lake	Dewey Lake Tailwater	Hwy 1428 E of Prestonsburg; left on Hwy 302 to dam	●					P	U	26-50	Free	-		●		●	
2	Dewey Lake	Terry Ramp	Hwy 1428 E of Prestonsburg; left on Hwy 302; follow around lake to site	●	●	A	P	M	P	U	26-50	Free	Yes					
3	Dewey Lake	Jenny Wiley SP Campground Ramp	Hwy 1428 E of Prestonsburg; left on Hwy 302; follow around lake to site	●	●	A	P	M	U		< 25	Free	-		●	◆	◆	
4	Dewey Lake	Jenny Wiley State Park	Hwy 1428 E of Prestonsburg; Hwy 302 to state park. Note: Bank fishing access; some areas carry down launch sites	●	●	C			U			Free	-		◆	◆	◆	◆
5	Dewey Lake	Jenny Wiley State Park Marina Ramp	Hwy 1428 E of Prestonsburg; left on Hwy 302 to state park	●	●	A	P	M	P	U	< 25	Free	Yes				●	○
6	Dewey Lake	German Bridge Ramp	Hwy 1428 E of Prestonsburg to Emma; left on Hwy 194 to bridge		◆	B	P	S	U		< 25	Free	-		◆	◆	◆	
7	Dewey Lake	Dewey Lake WMA - Johns Creek	Hwy 1428 E of Prestonsburg; left on Hwy 194 to WMA. Note: bank fishing access; carry down; small boat access	●	●	C			U		< 25	Free	-					



Yatesville Lake

U.S. Army Corps of Engineers
State Route 1185
PO Box 1107
Louisa, KY 41230-1107
606-686-2412

Fishing Information:
606-686-3161



Dewey Lake

U.S. Army Corps of Engineers
Dewey Dam Road
HC 70 Box 540
Van Lear, KY 41265-9601
606-789-4521

Fishing Information:
606-886-6398

