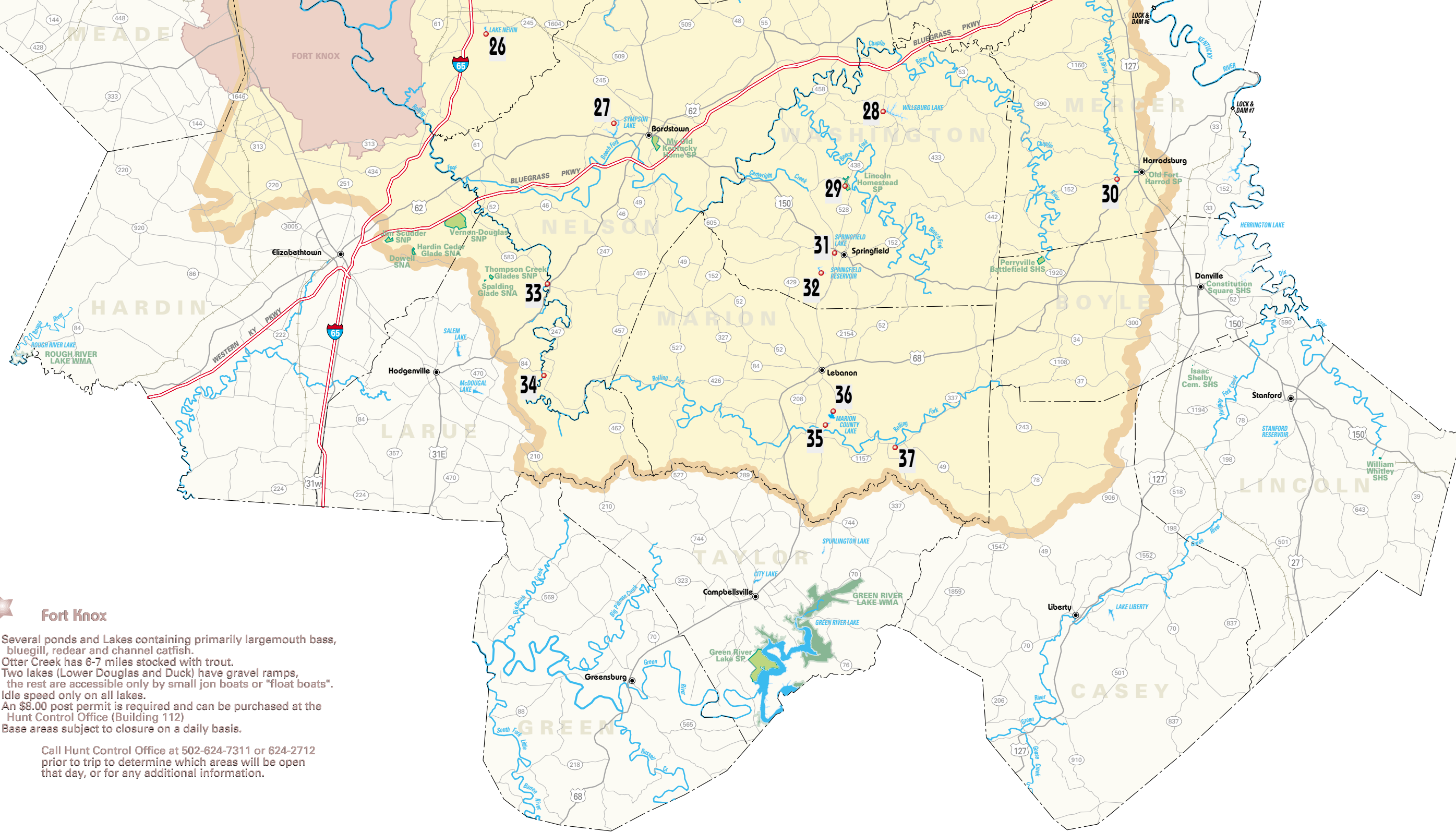




Fort Knox

- Several ponds and Lakes containing primarily largemouth bass, bluegill, redear and channel catfish.
- Otter Creek has 6-7 miles stocked with trout.
- Two lakes (Lower Douglas and Duck) have gravel ramps, the rest are accessible only by small jon boats or "float boats".
- Idle speed only on all lakes.
- An \$8.00 post permit is required and can be purchased at the Hunt Control Office (Building 112)
- Base areas subject to closure on a daily basis.

Call Hunt Control Office at 502-624-7311 or 624-2712 prior to trip to determine which areas will be open that day, or for any additional information.



Salt River Basin Index

See Map on p.18+19

Site	Water Body	River Name	Directions	Shoreline	Boat Ramp	Ramp Type	Ramp Surface	Launch Lanes	Parking	Capacity	Ramp Fee	Courtesy Dock	Handicap Pier	Picnic	Camp	Restrooms	Marina
1	Ohio River	Milton Ramp	US 421 N of Bedford to Milton; right on Ky 36	●	●	B	P	S	P	< 25	Free						
2	Ohio River	Westport	KY 53 N of LaGrange; left on US 42; right on KY 524 to Westport	●	●	A	P	M	P	26-50	Free	Yes	●			●	
3	Reformatory Lake	Wendell Moore Park Side	KY 146 W of LaGrange; R. on KY 393 to lake. Note: 54-acre lake; no boats allowed; lmted. fishing area	○					P	50 +	Free		○	○	○		
4	Wilburn City Pk.	LaGrange	KY 146 NE of LaGrange; right on KY 712; right on Hoffman Lane, right on Head Lane to lakes. Note: Two lakes - 1-and 4-acre lakes	○					U		Free			○		○	
5	Lake Jericho	Lake Jericho Recreation Area	KY 146 W of New Castle; left on KY 153; left to lake. Note: 137-acre lake; bank fishing fee	●	●	B	P	M	U	26-50	\$	Yes	●	●	●		
6	Guist Creek Lake	Guist Creek Marina	US 60 E of Shelbyville; left on Hwy 1871; right on Hwy 1779; entrance on right. Note: 317-acre lake	●	●	A	P	M	P	50 +	\$				●	●	○
7	Clear Creek	Clear Creek Access	3rd Street at old railroad overpass; Elmo Head Park in Shelbyville. Note: canoes or jon boats only		●	C	P	S	U	< 25	Free						
8	Shelby Lake	City of Shelbyville	KY 53 in Shelbyville; right on Burks Branch Road; right at Shelby Lake Park; ramp located in park. Note: 17-acre lake	◇	◇	B	P	S	P	< 25	\$		◇	◇			
9	Long Run Pk.	Louisville	Gene Snyder Freeway (I-265) to Exit 27; E on US 60; left on Flat Rock Road to Long Run Park. Note: 28.7-acre lake	○	○	B	P	S	P	< 25	Free	Yes		○		◇	◇
10	Fisherman's Pk.	Louisville	Gene Snyder Parkway (I-265) to Taylorsville Road exit; KY 155 N to Old Heady Road (left). Note: 15.2 acres (includes 8 fishing lakes); no boats allowed	○					P	< 25	Free			○		○	◇
11	Charlie Vettner Pk. Lake	Chenoweth Park	Gene Snyder Freeway (I-265) S of Louisville to Exit 19; N on Billtown Road; right on Mary Dell Lane; right to Chenoweth Park. Note: 1.2-acre lake; no boats allowed	○					P	< 25	Free			○		◇	
12	McNeely Lake	McNeely Boat Ramp	Gene Snyder Freeway (I-265) S of Louisville to Exit 15 S on Beulah Church Road to dead end; right on Old Bates Road; left on Cooper Chapel Road. Note: 51-acre lake	○	○	B	P	S	P	< 25	Free	Yes		○		◇	
13	Ohio River	Cox's Park	I-71; Exit 2, Zorn Avenue N; right on River Road to Park	●	●	A	P	M	P	< 25	Free	Yes	●		●		
14	Cherokee Pk.	Louisville	I-64 W to Exit 8; S on Grinstead Drive; L on Lexington Rd. Note: 4.6-acre lake; no boats allowed	◆					P	< 25	Free		○	○		◆	◇
15	Ohio River	Bandman Park	I-71; Exit 2 - Zorn Ave N; L. on River Rd to park (at mouth of Beargrass Cr). Note: no boats allowed	○					P	50 +	Free						
16	Ohio River	McAlpine Lock and Dam	I-64 to 22nd Street (Exit 3); right on Northwestern Parkway; right on 27th Street; go under I-64 to Lannan Memorial Park (beyond Drawbridge)	●					P	50 +	Free						
17	Ohio River	Shawnee Park	Watterson Expressway; Exit 3 W on Mohammad Ali Blvd. to Southwestern Parkway	○					P	50 +	Free						
18	Chickasaw Pk.	Louisville	Watterson Expressway (I-264) to Exit 3; Hale Avenue W; right on Southwestern Parkway; left to entrance. Note: 1.6-acre lake; no boats allowed	○					P	< 25	Free			○		◇	
19	Watterson Lake	Louisville	Watterson Expressway (I-264); Exit 9 - N on Taylor Blvd; right on Beecher Street; in Wyandotte Park. Note: 4.1-acre lake	○					P	< 25	Free					◇	
20	Iroquois Pk.	Louisville	W on Watterson Expressway (I-264); south on New Cut Road (Hwy 1865); right on Hwy 1142; right on Park Road. Note: 1-acre pond	○					P	< 25	Free			○		◇	
21	Ohio River	Greenwood Ramp	Gene Snyder Freeway (I-265) W of Louisville; Dixie Hwy N (US 60); Hwy 1931 W (Greenwood Rd)	●	●	A	P	M	P	26-50	Free		●		●		
22	Waverly Pk.	Louisville	Watterson Expressway (I-264) to Dixie Highway (US 60) SW; left on Hwy 1931; right on Arnoldtown Road. Note: 5.3-acre lake	○					P	< 25	Free			○		○	
23	Tom Wallace Pk.	Louisville	Gene Snyder Parkway (I-265) S; left on New Cut Road (Hwy 1865); left on Manslick Road; right on Mitchell Hill Road. Note: 5.4-acre lake	○					P	< 25	Free			○		◇	
24	Ohio River	West Point Ramp - Salt River	US 31 W in West Point; turn on only blacktop road running E from 31W	●	●	B	P	S	U	< 25	\$					◆	
25	Salt River	KOA Camp	KY 44 E of Shepherdsville to KOA Campground (KOA campground fee)		◆	B	U	S	U	< 25	\$				◆		
26	Lake Nevin	Bernheim Forest	I-65 S of Shepherdsville to Hwy 245 (Exit 112); left on Hwy 245 to Bernheim Forest. Note: 32-acre lake; limited bank fishing; 7:00 am to sunset	○					U	< 25	\$						
27	Sympson Lake	Bardstown	US 62 W of Bardstown; right on 2737 to Sympson Lake. Note: 184-acre	●	●	B	P	S	U	< 25	\$						
28	Willisburg Lake		KY 555 N of Springfield (10 miles); lake located on right. Note: 126-acre lake; fee to bank fish	●	●	A	P	M	U	< 25	\$	Yes				●	
29	Lincoln Homestead Lake	Lincoln Homestead SP Lake	KY 55 N of Springfield; left on KY 438; entrance to Lincoln Homestead Park located near intersection of KY 438 and KY 528; lake located in park. Note: 9-acre lake; electric motors only	○	●	C			U	< 25	Free		○			◇	
30	Salt River		KY 152 W of Harrodsburg; cross bridge; turn at first road on left		●	B	U	S	U	< 25	Free						
31	Springfield Res. (old)		US 150 W of Springfield (1/2 mile); reservoir located behind Armour Food Company (on left). Note: 39-acre; no boats allowed	○					U	< 25	Free						
32	Springfield Reservoir	Booker Reservoir	KY 55 S of Springfield; right on Booker Branch Road. Note: 14-acre lake; electric motors only	○	○	A	P	S	U	< 25	Free						
33	Rolling Fk. River	New Haven Ramp	US 31E S of Bardstown to New Haven; right on KY 52 (0.8 mile); left to ramp		●	B	P	S	U	< 25	Free						
34	Rolling Fk. River	Howardstown Ramp	US 31E S of Bardstown to New Haven; left on KY 52; right on KY 247 to Howardstown; right on KY 84; ramp is at the bridge	●	●	B	P	S	U	< 25	Free						
35	Marion County Lake		KY 49 S of Lebanon; right on Cox's Road; right on Calvary Road; follow signs. Note: 21-acre lake	●	●	B	P	S	P	< 25	Free		●				
36	Fagan Branch Lake	Fagan Branch Ramp	KY 49 S of Lebanon; R. on Cox's Rd; R. on Calvary Rd; R. on Fagan Branch Rd. Note: 140-acre lake	●	●	B	P	S	U	< 25	Free						
37	Rolling Fk. River		KY 49 S of Lebanon; Rolling Fork River bridge just W of Bradfordsville	●	●	B	U	S	U	< 25	Free						
38	Beaver Lake	Beaver Ramp	US 62 W of Lawrenceburg (7 miles); right on Beaver Lake Rd (KY 749) to lake. Note: 158-acre lake	●	●	B	P	S	U	< 25	\$		●	◆	◆	◆	◆
39	Salt River		KY 44 W of Lawrenceburg; left on Dry Dock Road; access at Slab River crossing		●	C			U	< 25	Free						
40	Salt River		US 127 S of Lawrenceburg; right on KY 513; left immediately after crossing the river		●	C			U	< 25	Free						

★ Zebra Mussels

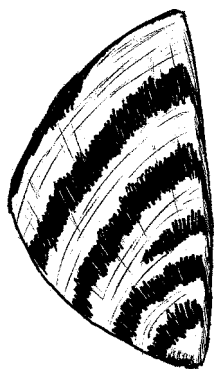


Zebra mussel clusters kill native mussels.

Zebra mussels are non-native mussels transported to this country in ballast water of freight ships from Europe. They are native to the Caspian and Black seas. They have now **infected** the Great Lakes and are present in the Kentucky and Ohio rivers and Kentucky, Barkley, Taylorsville, and Green River lakes.

Zebra mussels are fingernail size to two inches in length. They have an elongated, pointed shell with zebra-like patterns of stripes ranging from brown-yellow. These mussels reproduce rapidly and compete with young fish and pose a serious problem to our native fresh water mussels.

Because Zebra mussels grow together in rock-like clusters, they often damage and destroy boat motors, and clog cooling systems, water intakes, bilge pumps and other submerged boat parts.



To prevent or slow new introductions of Zebra Mussels:

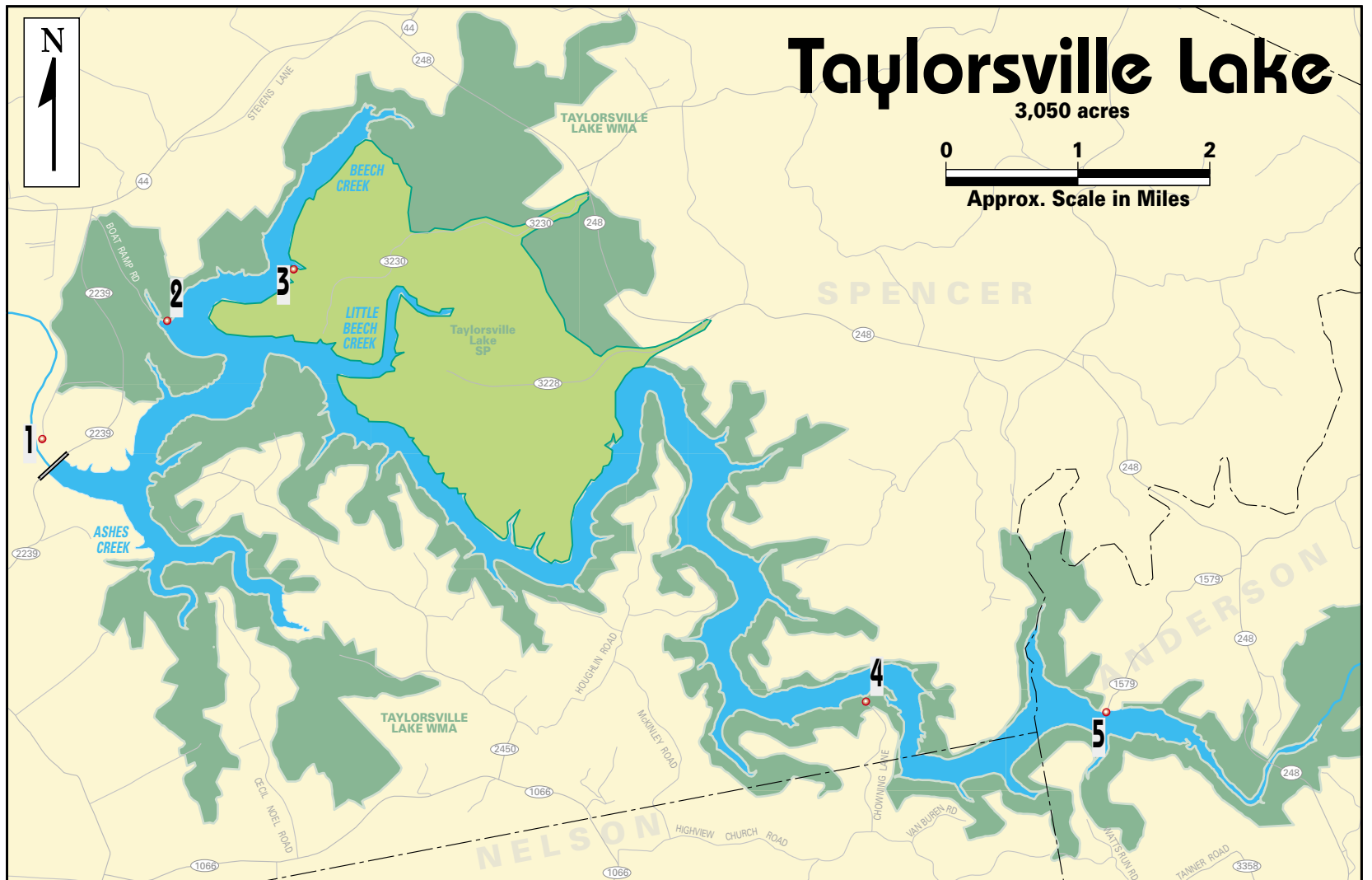
- ✓ Inspect your boat, motor, live well, and boat trailer for zebra mussels after exiting the water
- ✓ Drain bilges and live wells
- ✓ Scrape off any mussels
- ✓ Flush boat engines with uncontaminated water to remove mussel larvae
- ✓ Dry your boat and trailer for 2-4 days (preferably 2 weeks) before entering another waterway
- ✓ Wash boat parts with hot water (140 degrees)



Brown Trout

Taylorsville Lake Index

Site	Water Body	Area Name	Directions	Shoreline	Boat Ramp	Ramp Type	Ramp Surface	Launch Lanes	Parking	Capacity	Ramp Fee	Courtesy Dock	Handicap Pier	Picnic	Camp	Restrooms	Marina
1	Taylorsville Lake	Tailwater	KY 44 E of Taylorsville; right on Hwy 2239; follow signs at dam	●	●				✓	< 25	Free	-		●	●	○	
2	Taylorsville Lake	Settlers Trace	KY 44 E of Taylorsville; right on Hwy 2239; left on Boat Ramp Road. Note: 2,050-acre lake	●	●	A	P	M	✓	50 +	Free	Yes				●	○
3	Taylorsville Lake	Possum Ridge (State Park Ramp)	KY 44 E of Taylorsville to KY 248; follow signs to entrance of state park at Possum Ridge Road	●	●	A	P	M	✓	50 +	Free	Yes	◆	◆	◆		
4	Taylorsville Lake	Chowning Lane	KY 55 S of Taylorsville; left on Hwy 1066; left on Highview Church Road; left on Chowning Lane	●	●	A	P	M	✓	50 +	Free	Yes				◆	
5	Taylorsville Lake	Van Buren Ramp	Hwy 44 W of Lawrenceburg; left on Hwy 1579; left on Hwy 248; right on Hwy 1579 to ramp	●	●	A	P	M	✓	50 +	Free	Yes				●	



The Code of Angling Ethics

The Angler always:

- Promotes, through education and practice, ethical behavior in the use of aquatic resources.
- Values and respects the aquatic environment and all living things in it.
- Avoids spilling and never dumps any pollutants, such as gasoline and oil, into the aquatic environment.
- Disposes of all trash, including worn lines, leaders, and hooks, in appropriate containers, and helps to keep fishing sites litter-free.
- Takes all precautionary measures necessary to prevent the spread of exotic plants and animals, including live baitfish, into non-native habitats.
- Learns and obeys angling and boating regulations, and treats other anglers, boaters and property owners with courtesy and respect.
- Respects property rights, and never trespasses on private lands or waters.
- Keeps no more fish than needed for consumption, and never wastefully discards fish that are retained.
- Practices conservation by carefully handling and releasing alive all fish that are unwanted or prohibited by regulation, as well as other animals that may become hooked or entangled accidentally.
- Uses tackle and techniques that minimize harm to fish when engaging in "catch and release" angling.



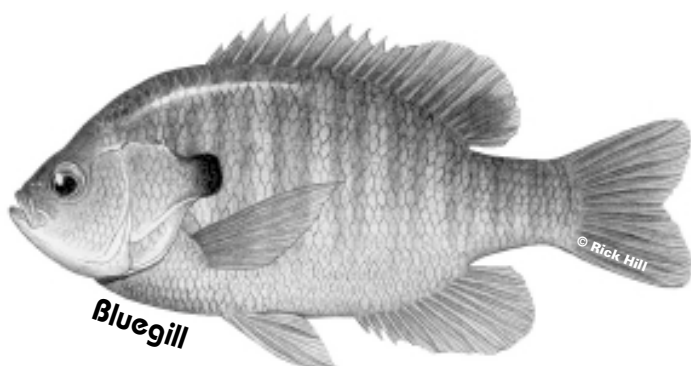
Taylorsville Lake

U.S. Army Corps of Engineers
2825 Overlook Road
Taylorsville, KY 40071-9801
502-477-8882

Fishing Information:
502-477-8606

Index Legend

A	"A" Ramp - any trailerable recreational boat		
B	"B" Ramp - any LIGHT trailerable recreational boat		
C	"C" Ramp - carry-down only		
S	Single launch lane	♿	Handicap Accessible
M	Multiple launch lanes	●	Year-round 24 hours
P	Paved ramp/parking lot	○	Year-round limited hours
U	Unpaved ramp/parking lot	◆	Seasonal 24 hours
<25	Number of vehicles	◇	Seasonal limited hours



Bluegill

Smallmouth bass are found in many streams and lakes in Kentucky.



© Soc Clay, Inc.